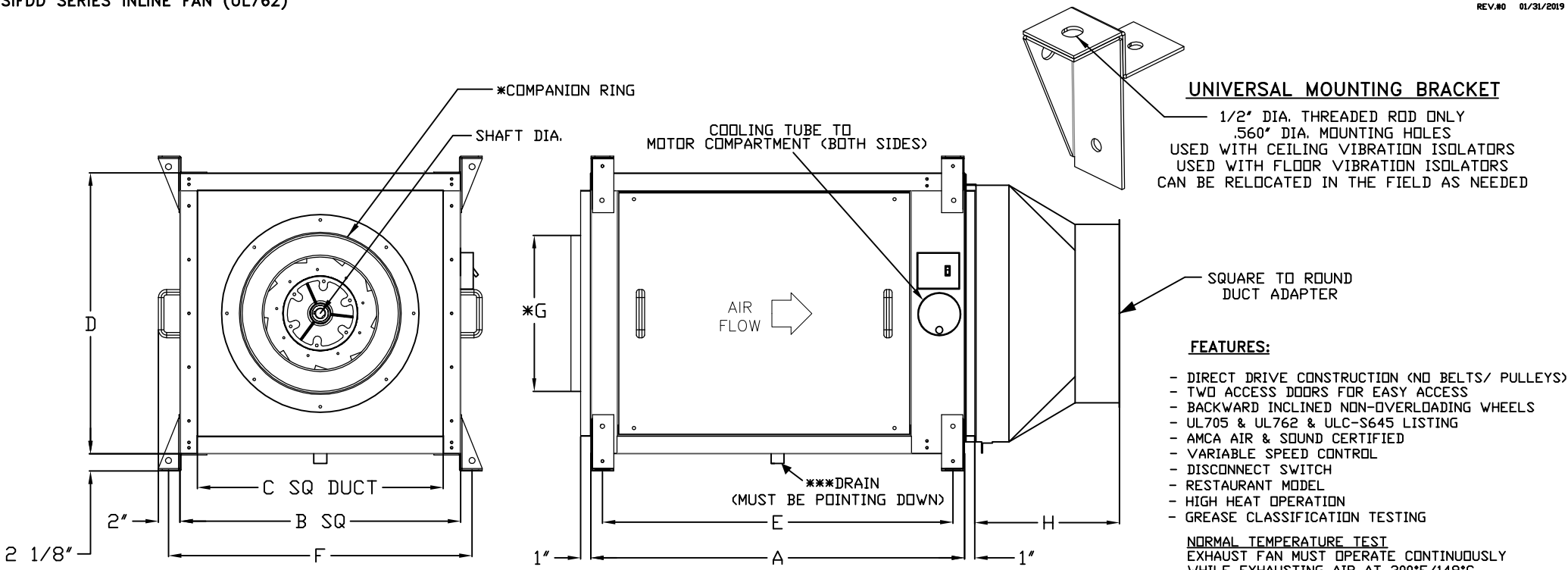


SIFDD SERIES INLINE FAN (UL762)



- NOTES:
- \* COMPANION RINGS USED WHEN ROUND DUCT BY OTHER.
  - \* COMPANION RINGS ARE INSTALLED ON THE INTAKE.
  - \* WHEN COMPANION RINGS ARE USED TOTAL LENGTH INCREASE BY 1/2".
  - \*\* DWXXFRISER USED WHEN CONNECTING TO STANDARD DUCT.
  - \*\* DWXXFRISERS ARE INSTALLED ON THE INTAKE.
  - \*\* WHEN DWXXFRISERS ARE USED TOTAL LENGTH INCREASE BY 3".
  - \*\*\* 2" NPT THREADED DRAIN CENTERED IN BASE. MUST BE CONNECTED TO OPTIONAL GREASE BOX OR PIPED TO GREASE RESERVOIR (RECOMMENDED).
  - \*\*\*\* IF CAS DUCT IS NOT USED, BLACK IRON GREASE DUCT WILL NEED TO BE WELDED DIRECTLY TO THE UNIT.

SIFDD INLINE DIRECT DRIVE  
CENTRIFUGAL INLINE FAN DIMENSIONAL DATA

FAN MODEL	A	B	C	D	E	F	G	H	SHAFT DD DIA.	ROUND DUCT CONNECTION	APPROX SHIPPING (LBS)
SIF11DD-SS	27 7/8	19 1/8	15 7/8	19 3/8	25 5/8	21 3/8	12 1/2	13 1/8	1/2	12" DUCT	150
SIF13DD-SS	29 7/8	21 1/8	17 7/8	21 1/8	27 5/8	23 3/8	13 1/2	13 1/8	1/2-7/8	14" DUCT	160
SIF15DD-SS	34 7/8	26 1/8	22 7/8	26 1/8	32 5/8	28 3/8	15 1/8	13 1/8	1/2-7/8	16" DUCT	200
SIF18DD-SS	35 7/8	27 1/8	23 7/8	27 1/8	33 5/8	29 3/8	18 1/2	13 1/8	1 1/8	20" DUCT	250
SIF20DD-SS	38 7/8	31 1/8	27 7/8	31 1/8	36 5/8	33 3/8	19 5/8	19 1/8	1 3/8	20" DUCT	360
SIF24DD-SS	44 7/8	38 1/8	34 7/8	38 1/4	42 5/8	40 3/8	25 1/4	19 1/8	1 5/8	24" DUCT	420
SIF30DD-SS	49 7/8	45 1/8	41 7/8	45 1/4	47 5/8	47 3/8	24 3/8	23 1/8	1 5/8	24" DUCT	705
SIF36DD-SS	54 7/8	52 1/8	47 7/8	52 1/8	52 1/8	54 3/8	30 3/8	35 1/8	1 7/8	30" DUCT	870

**UNIVERSAL MOUNTING BRACKET**  
 1/2" DIA. THREADED ROD ONLY  
 .560" DIA. MOUNTING HOLES  
 USED WITH CEILING VIBRATION ISOLATORS  
 USED WITH FLOOR VIBRATION ISOLATORS  
 CAN BE RELOCATED IN THE FIELD AS NEEDED

SQUARE TO ROUND  
DUCT ADAPTER

- FEATURES:**
- DIRECT DRIVE CONSTRUCTION (NO BELTS/ PULLEYS)
  - TWO ACCESS DOORS FOR EASY ACCESS
  - BACKWARD INCLINED NON-OVERLOADING WHEELS
  - UL705 & UL762 & ULC-S645 LISTING
  - AMCA AIR & SOUND CERTIFIED
  - VARIABLE SPEED CONTROL
  - DISCONNECT SWITCH
  - RESTAURANT MODEL
  - HIGH HEAT OPERATION
  - GREASE CLASSIFICATION TESTING

**NORMAL TEMPERATURE TEST**  
 EXHAUST FAN MUST OPERATE CONTINUOUSLY WHILE EXHAUSTING AIR AT 300°F/149°C UNTIL ALL FAN PARTS HAVE REACHED THERMAL EQUILIBRIUM, AND WITHOUT ANY DETERIORATING EFFECTS TO THE FAN WHICH WOULD CAUSE UNSAFE OPERATION.

**ABNORMAL FLARE-UP TEST**  
 EXHAUST FAN MUST OPERATE CONTINUOUSLY WHILE EXHAUSTING BURNING GREASE VAPORS AT 600°F (316°C) FOR A PERIOD OF 15 MINUTES WITHOUT THE FAN BECOMING DAMAGED TO ANY EXTENT THAT COULD CAUSE AN UNSAFE CONDITION.

- OPTIONS:**
- FLOOR VIBRATION ISOLATORS
  - CEILING VIBRATION ISOLATORS
  - COMPANION RINGS
  - ROUND DUCT CONNECTION FOR STANDARD DUCT
  - UNIVERSAL HANGING BRACKET