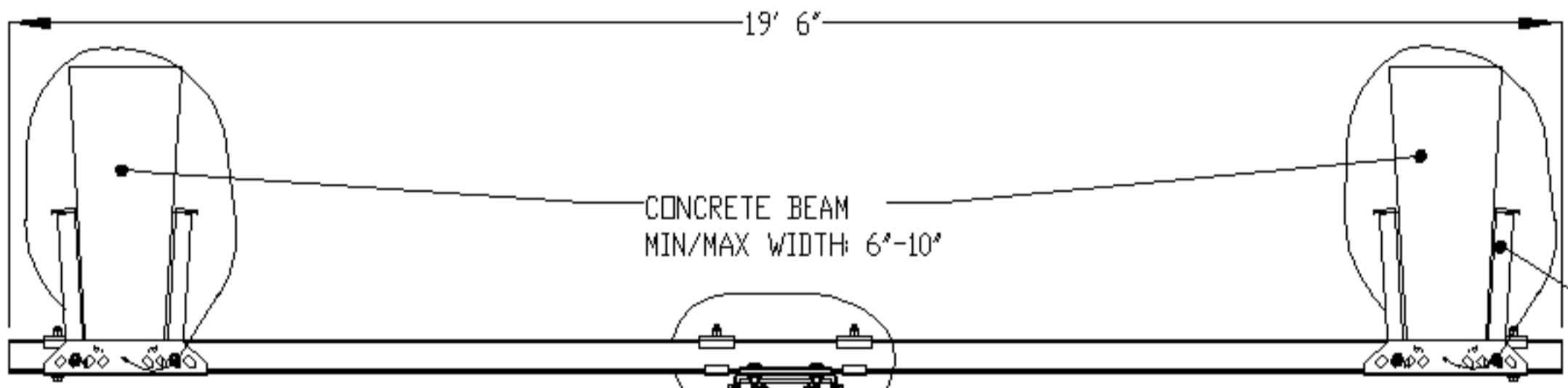
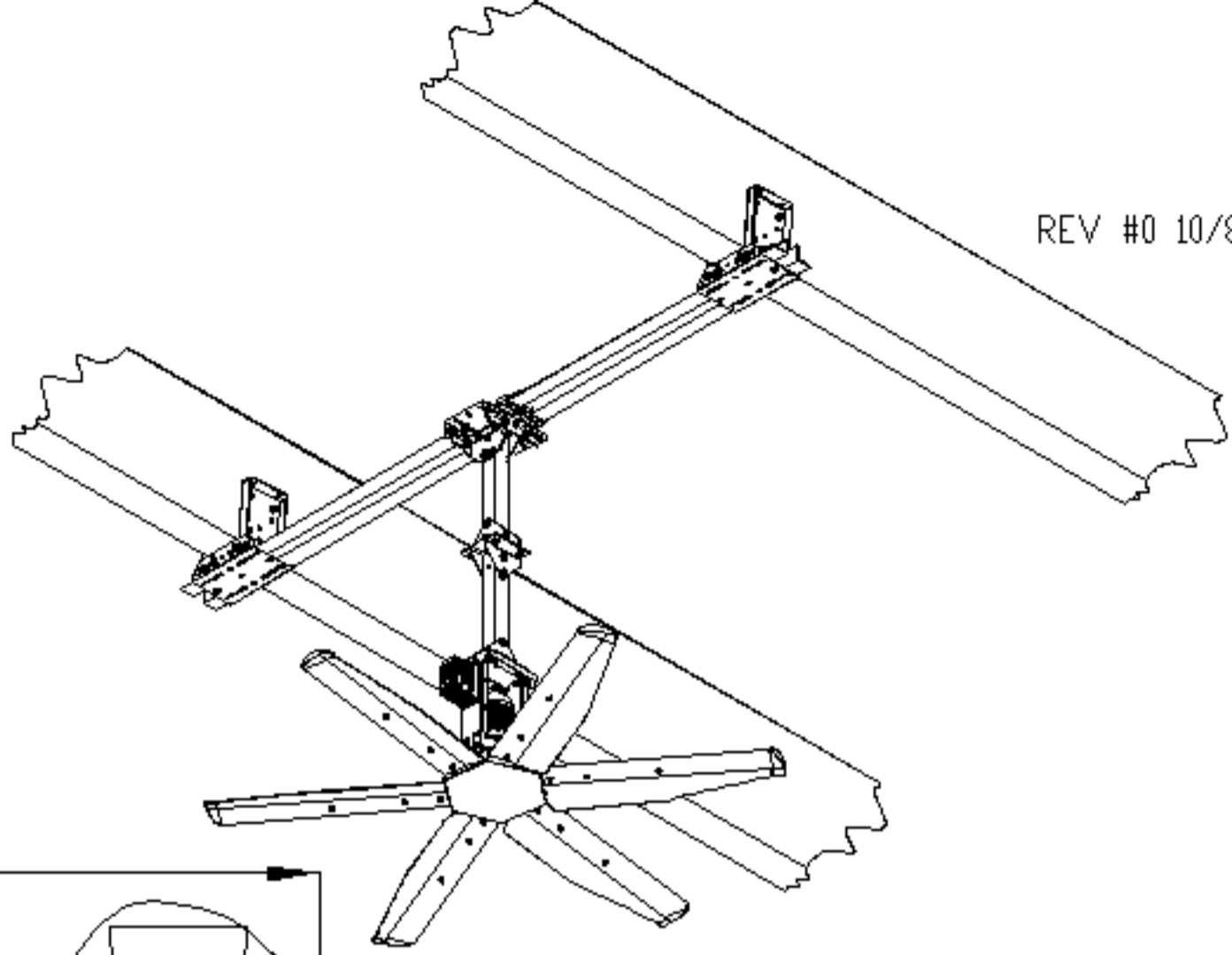


HVLS - HIGH VOLUM LOW SPEEN FAN ; CONCRETE BEAM MULTI MOUNT

REV #0 10/8/19



OPTIONAL EXTENSION (AVAILABLE IN 2', 4', 6' & 8' LENGTHS) 2 MAX PER FAN

STANDARD PIVOT MOUNT (AVAILABLE IN 1', 2', OR 4' LENGTHS)

SAFETY CABLE

FAN MOUNTED VFD (OPTIONAL)

SECURE TO ROOFING MEMBER

GUY WIRE (4)

MAIN HUB AND DRIVE ASSEMBLY

45°-60°

25
21 1/2

FAN BLADES 6', 8', 10', 12', 14', 16', 18', 20', 22' OR 24'

CLEARANCES:

- 60° MIN CENTER OF FAN TO ROOF DECK
- 30° MIN FROM FAN BLADE'S LEADING EDGE TO OBSTRUCTIONS ABOVE OR BELOW
- 18' MIN FROM SIDE OF FAN TO ANY OBSTRUCTION
- 144' MIN FROM FLOOR TO FAN LEADING EDGE HEIGHT