

Customer: Date: 7/6/2009  
 Contact: From:  
 Telephone: Company:  
 Fax: Return Tel:  
 Job: Return Fax:  
 Quote #:

**GIVEN DATA**

**Construction**

Item: CWC1-3  
 Coils Per Bank: 1  
 Allow Opp. End: No  
 Tube OD IN: 5/8  
 Coil Duty: Cool-Standard  
 Fins Per Inch: 12  
 Rows: 4  
 Fin Surface: B  
 Fin Height (IN): 31.50  
 Finned Length (IN): 27.00  
 Tubing Mat. (IN): 0.020 Copper  
 Fin Mat. (IN): 0.0075 Aluminum  
 Conn Qty/Size (IN): 1 / Optimize  
 Circuiting: Optimize  
 Face Area (SQ FT): 5.91

**Air Side**

Air Flow (Sft<sup>3</sup>/min) 2,350  
 Altitude FT: .00  
 Ent. Air DB/WB °F: 95.00 / 78.00  
 Lvg. Air DB/WB °F: .00 / .00  
 Total / Sensible MBH: 120.0 / .00  
 Max Air PD "H2O: .00

**Fluid Side**

Fluid Type: Propylene  
 Percent Glycol: 20  
 Ent. Fluid : 45.00  
 Lvg. Fluid : 55.00  
 Fluid Flow gal/min: .00  
 Max FPD FT H2O: .00  
 TurboSpirals: No

O U T P U T   D A T A		M o s t   E c o n o m i c a l			S p e c i f i e d   C o i l		
		Coil 1	Coil 2	Coil 3	✓ Coil 4	Coil 5	Coil 6
Model Number:					<b>5WS1204B</b>		
Air Velocity:	(Sft/min)				<b>397.9</b>		
Total Capacity:	MBH				<b>87.82</b>		
Sens. Capacity:	MBH				<b>63.30</b>		
Lvg. Air DB:	°F				<b>70.37</b>		
Lvg. Air WB:	°F				<b>68.82</b>		
Standard APD	"H2O				<b>.36</b>		
Lvg. Fluid:	°F				<b>52.32</b>		
Fluid Flow:	gal/min				<b>24.77</b>		
Fluid PD:	FT H2O				<b>.70</b>		
Fluid Vel.:	ft/s				<b>1.26</b>		
Conn Size:	IN				<b>(1) 2.500</b>		
Weight (Dry):	lbm				<b>107.9</b>		
Weight (w/Fluid):	lbm				<b>148.1</b>		
Notes:					<b>BGIL</b>		

**Notes:**

- B) Rated In Compliance With ARI 410.
- G) Load below specification. Consult factory.
- I) Header Pressure Drop Exceeds 30% of Total Fluid Pressure Drop.
- L) Coil rating valid for Heatcraft coils only.

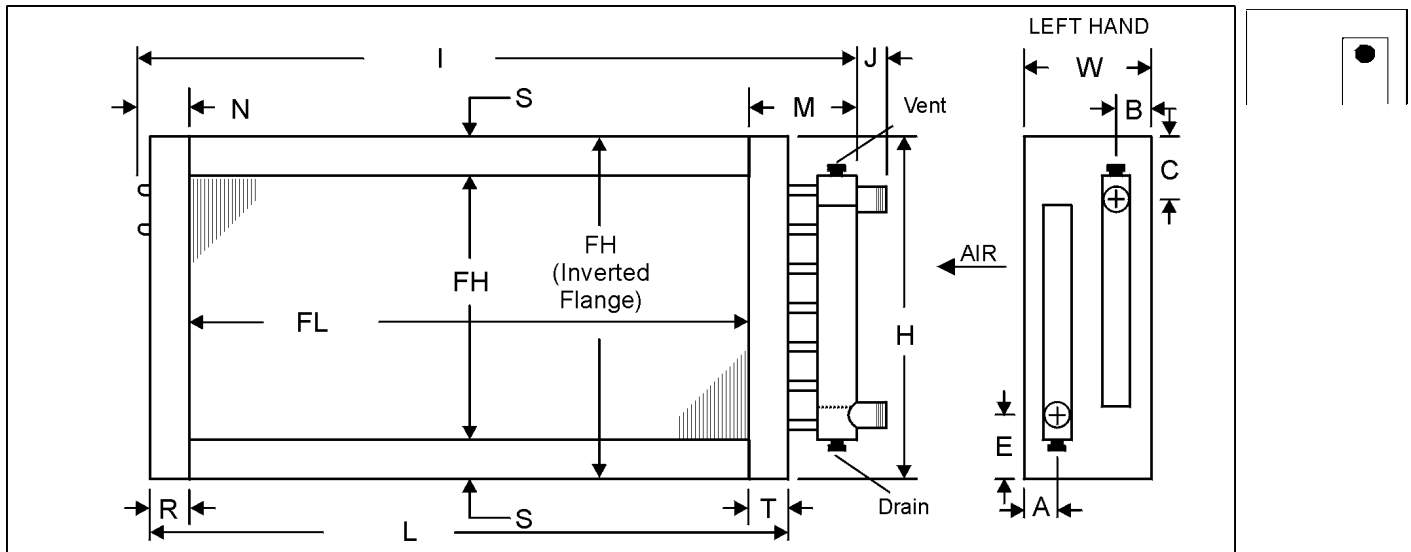
Customer:  
 Contact:  
 Telephone:  
 Fax:  
 Job:  
 Quote #:

Date: 7/6/2009  
 From:  
 Company:  
 Return Tel:  
 Return Fax:

ITEM	QTY	MODEL NUMBER						HAND
		TYPE	FPI	ROWS	FIN	FH (IN)	FL (IN)	
CWC1-3	1	5WS	12	04	B	31.50	27.00	Left

MATERIALS OF CONSTRUCTION		OPTIONS				
Fins	0.0075 Aluminum	Coating	None		TurboSpirals	No
Tubes	0.020 Copper	Casing Type	Flanged		Moisture Eliminator	No
Casing	Galvanized Steel	Vent & Drain	.50 FPT on Face		Mounting Holes	No
Conn. Material	Carbon Steel				Label Kit	No
Conn. Type	MPT				Drain Headers	No
Conn. Size	2.500					

Vent/Drain Location



DIMENSIONAL DATA(IN)														
A	B	C	E	H	I	J	L	M	N	R	S	T	W	SJC
1.80	1.80	4.75	2.75	34.50	34.75	6.00	30.00	5.25	2.50	1.50	1.50	1.50	7.50	

**NOTES:**

**GENERAL NOTES:**

1. All dimensions are in (in)
2. Manually verifying dimensions is highly recommended.
3. The supply line should be connected to the lower connection on the leaving air side for counterflow operation.
4. Coils will vent and drain through factory-installed vent and drain fittings when mounted level for horizontal flow.
5. Connection location other than standard could affect vent and drain locations. Consult factory.