

Customer: Date: 7/6/2009
 Contact: From:
 Telephone: Company:
 Fax: Return Tel:
 Job: Return Fax:
 Quote #:

GIVEN DATA

Construction

Item: CWC1-1
 Coils Per Bank: 1
 Allow Opp. End: No
 Tube OD IN: 5/8
 Coil Duty: Cool-Standard
 Fins Per Inch: Optimize
 Rows: Optimize
 Fin Surface: Optimize ABC
 Fin Height (IN): 31.50
 Finned Length (IN): 27.00
 Tubing Mat. (IN): 0.020 Copper
 Fin Mat. (IN): 0.0075 Aluminum
 Conn Qty/Size (IN): 1 / Optimize
 Circuiting: Optimize
 Face Area (SQ FT): 5.91

Air Side

Air Flow (Sft³/min) 1,000.0
 Altitude FT: .00
 Ent. Air DB/WB °F: 95.00 / 78.00
 Lvg. Air DB/WB °F: .00 / .00
 Total / Sensible MBH: 36.00 / .00
 Max Air PD "H2O: .00

Fluid Side

Fluid Type: Propylene
 Percent Glycol: 20
 Ent. Fluid : 45.00
 Lvg. Fluid : 55.00
 Fluid Flow gal/min: .00
 Max FPD FT H2O: .00
 TurboSpirals: No

| O U T P U T D A T A | | Most Economical | | | Specified Coil | | |
|---------------------|-----------|-----------------|------------------|--------|----------------|--------|--------|
| | | Coil 1 | ✓ Coil 2 | Coil 3 | Coil 4 | Coil 5 | Coil 6 |
| Model Number: | | | 5WS0604B | | | | |
| Air Velocity: | (Sft/min) | | 169.3 | | | | |
| Total Capacity: | MBH | | 36.42 | | | | |
| Sens. Capacity: | MBH | | 24.87 | | | | |
| Lvg. Air DB: | °F | | 72.26 | | | | |
| Lvg. Air WB: | °F | | 69.09 | | | | |
| Standard APD | "H2O | | .05 | | | | |
| Lvg. Fluid: | °F | | 55.12 | | | | |
| Fluid Flow: | gal/min | | 7.43 | | | | |
| Fluid PD: | FT H2O | | .10 | | | | |
| Fluid Vel.: | ft/s | | .38 | | | | |
| Conn Size: | IN | | (1) 2.500 | | | | |
| Weight (Dry): | lbm | | 91.55 | | | | |
| Weight (w/Fluid): | lbm | | 131.8 | | | | |
| Notes: | | | BEL | | | | |
| | | | | | | | |
| | | | | | | | |

Notes:

B) Rated In Compliance With ARI 410. L) Coil rating valid for Heatcraft coils only.
 E) Rated in accordance with ARI 410, actual performance may vary by application

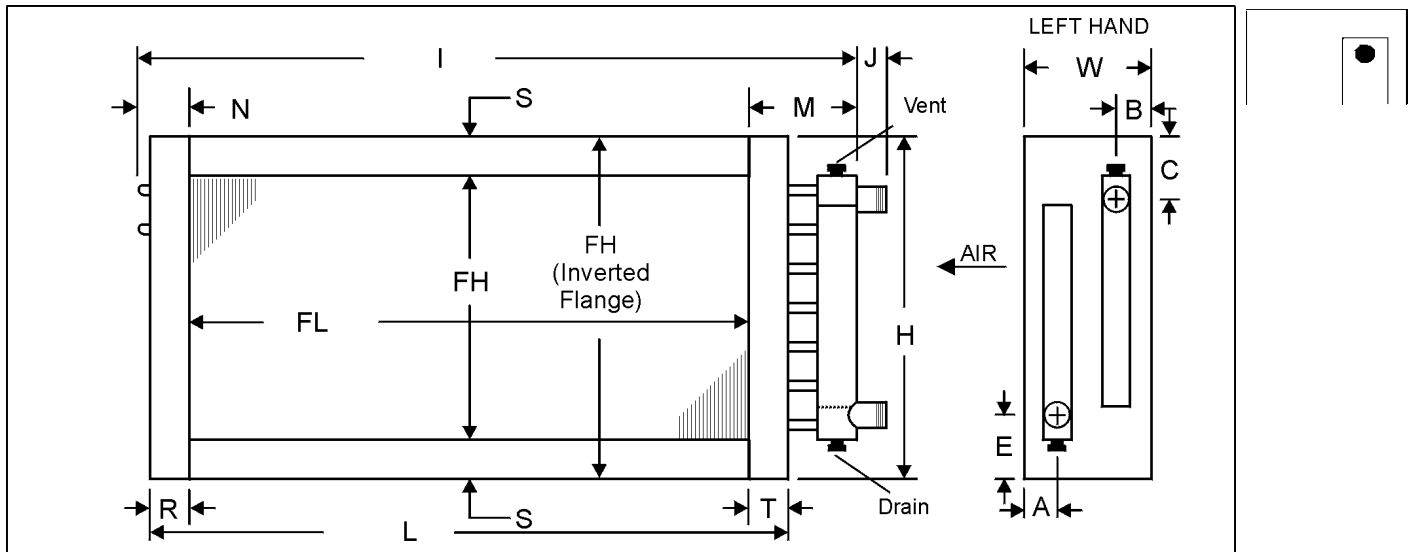
Customer:
 Contact:
 Telephone:
 Fax:
 Job:
 Quote #:

Date: 7/6/2009
 From:
 Company:
 Return Tel:
 Return Fax:

| ITEM | QTY | MODEL NUMBER | | | | | | HAND |
|--------|-----|--------------|-----|------|-----|---------|---------|------|
| | | TYPE | FPI | ROWS | FIN | FH (IN) | FL (IN) | |
| CWC1-1 | 1 | 5WS | 06 | 04 | B | 31.50 | 27.00 | Left |

| MATERIALS OF CONSTRUCTION | | OPTIONS | | | | |
|---------------------------|------------------|--------------|-----------------|--|---------------------|----|
| Fins | 0.0075 Aluminum | Coating | None | | TurboSpirals | No |
| Tubes | 0.020 Copper | Casing Type | Flanged | | Moisture Eliminator | No |
| Casing | Galvanized Steel | Vent & Drain | .50 FPT on Face | | Mounting Holes | No |
| Conn. Material | Carbon Steel | | | | Label Kit | No |
| Conn. Type | MPT | | | | Drain Headers | No |
| Conn. Size | 2.500 | | | | | |

Vent/Drain Location



| DIMENSIONAL DATA(IN) | | | | | | | | | | | | | | |
|----------------------|------|------|------|-------|-------|------|-------|------|------|------|------|------|------|-----|
| A | B | C | E | H | I | J | L | M | N | R | S | T | W | SJC |
| 1.80 | 1.80 | 4.75 | 2.75 | 34.50 | 34.75 | 6.00 | 30.00 | 5.25 | 2.50 | 1.50 | 1.50 | 1.50 | 7.50 | |

NOTES:

GENERAL NOTES:

1. All dimensions are in (in)
2. Manually verifying dimensions is highly recommended.
3. The supply line should be connected to the lower connection on the leaving air side for counterflow operation.
4. Coils will vent and drain through factory-installed vent and drain fittings when mounted level for horizontal flow.
5. Connection location other than standard could affect vent and drain locations. Consult factory.