

Customer: Date: 7/6/2009
 Contact: From:
 Telephone: Company:
 Fax: Return Tel:
 Job: Return Fax:
 Quote #:

GIVEN DATA**Construction**

Item: CWC3-2
 Coils Per Bank: 1
 Allow Opp. End: No
 Tube OD IN: 5/8
 Coil Duty: Cool-Standard
 Fins Per Inch: 10
 Rows: 4
 Fin Surface: B
 Fin Height (IN): 43.50
 Finned Length (IN): 42.00
 Tubing Mat. (IN): 0.020 Copper
 Fin Mat. (IN): 0.0075 Aluminum
 Conn Qty/Size (IN): 1 / Optimize
 Circuiting: Optimize
 Face Area (SQ FT): 12.69

Air Side

Air Flow (Sft³/min) 4,350
 Altitude FT: .00
 Ent. Air DB/WB °F: 95.00 / 78.00
 Lvg. Air DB/WB °F: .00 / .00
 Total / Sensible MBH: 180.0 / .00
 Max Air PD "H2O: .00

Fluid Side

Fluid Type: Propylene
 Percent Glycol: 20
 Ent. Fluid : 45.00
 Lvg. Fluid : 55.00
 Fluid Flow gal/min: .00
 Max FPD FT H2O: .00
 TurboSpirals: No

O U T P U T D A T A		M o s t E c o n o m i c a l			S p e c i f i e d C o i l		
		Coil 1	Coil 2	Coil 3	✓ Coil 4	Coil 5	Coil 6
Model Number:					5WS1004B		
Air Velocity:	(Sft/min)				342.9		
Total Capacity:	MBH				168.2		
Sens. Capacity:	MBH				116.8		
Lvg. Air DB:	°F				70.45		
Lvg. Air WB:	°F				68.48		
Standard APD	"H2O				.25		
Lvg. Fluid:	°F				54.34		
Fluid Flow:	gal/min				37.16		
Fluid PD:	FT H2O				.93		
Fluid Vel.:	ft/s				1.37		
Conn Size:	IN				(1) 3.000		
Weight (Dry):	lbm				187.9		
Weight (w/Fluid):	lbm				267.8		
Notes:					BGIL		

Notes:

B) Rated In Compliance With ARI 410.
 G) Load below specification. Consult factory.

I) Header Pressure Drop Exceeds 30% of Total Fluid Pressure Drop.
 L) Coil rating valid for Heatcraft coils only.

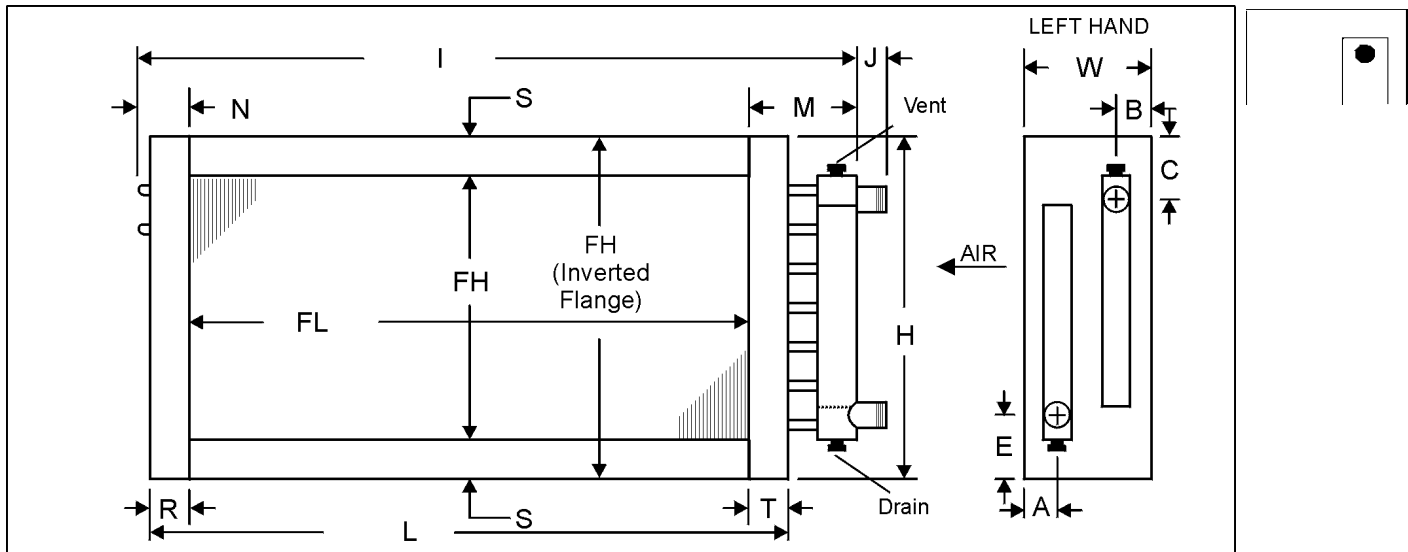
Customer:
 Contact:
 Telephone:
 Fax:
 Job:
 Quote #:

Date: 7/6/2009
 From:
 Company:
 Return Tel:
 Return Fax:

ITEM	QTY	MODEL NUMBER						HAND
		TYPE	FPI	ROWS	FIN	FH (IN)	FL (IN)	
CWC3-2	1	5WS	10	04	B	43.50	42.00	Left

MATERIALS OF CONSTRUCTION		OPTIONS				
Fins	0.0075 Aluminum	Coating	None		TurboSpirals	No
Tubes	0.020 Copper	Casing Type	Flanged		Moisture Eliminator	No
Casing	Galvanized Steel	Vent & Drain	.50 FPT on Face		Mounting Holes	No
Conn. Material	Carbon Steel				Label Kit	No
Conn. Type	MPT				Drain Headers	No
Conn. Size	3.000					

Vent/Drain Location



DIMENSIONAL DATA(IN)														
A	B	C	E	H	I	J	L	M	N	R	S	T	W	SJC
1.80	1.80	5.07	3.07	46.50	50.12	6.00	45.00	5.62	2.50	1.50	1.50	1.50	7.50	

NOTES:

GENERAL NOTES:

1. All dimensions are in (in)
2. Manually verifying dimensions is highly recommended.
3. The supply line should be connected to the lower connection on the leaving air side for counterflow operation.
4. Coils will vent and drain through factory-installed vent and drain fittings when mounted level for horizontal flow.
5. Connection location other than standard could affect vent and drain locations. Consult factory.