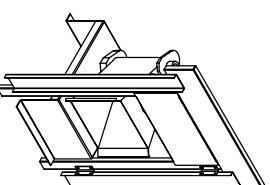


SITL VBD76DAH
REV.#4 07/28/201



UNIT INFORMATION.

ROOF OPENING 2' SMALLER THAN CURB DIMENSION

ALL DIMENSIONS ARE NOMINAL AND GIVEN IN INCHES.

ADD 1 INCH TO THIS DIMENSION IF USING 1.5 OR 2 HORSEPOWER SINGLE PHASE MOTOR

Direct Fired Profile Plate Specifications:

Direct fired burners shall have patented (US Patent No. US6629523B2), self-adjusting profile plates designed to ensure proper air velocity and pressure drop across the burner. Profile plates shall allow burners to achieve clean combustion by limiting by-product levels to a maximum of 5ppm of carbon monoxide (CO), and 0.5ppm of nitrogen dioxide (NO₂).

Application

Spring-loaded burner profile plates are engineered to automatically react to the momentum of a fresh air stream, without the need for any motors or actuators to mechanically adjust them. With this feature, all DF units are designed for demand control ventilation (DCV) requirements.

Certifications:

All profile products. All profile plate assemblies shall be included in the DF unit's ETL listing and comply with combined safety standards ANSI Z83.4 and CSA 3.7 (non-recirculating DF heaters) and ANSI Z83.18 (recirculating DF heaters).

General Construction:

General construction:
-Profile plates shall be formed from G90 galvanized steel.

- Profile plates shall vary in size per unit.
- Profile plates shall be mounted along the same plane as the discharge of the burner.
- Design shall incorporate properly torqued, permanently mounted spring hinges.

- Design shall incorporate properly torqued, permanently mounted spring hinges.