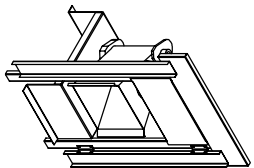
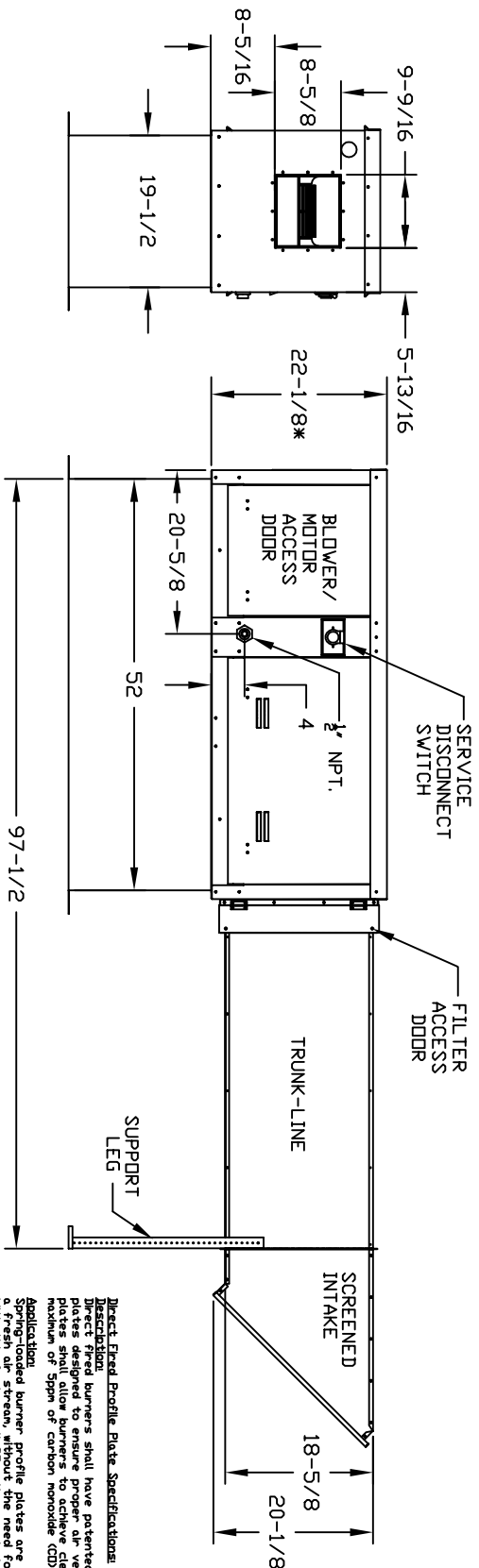
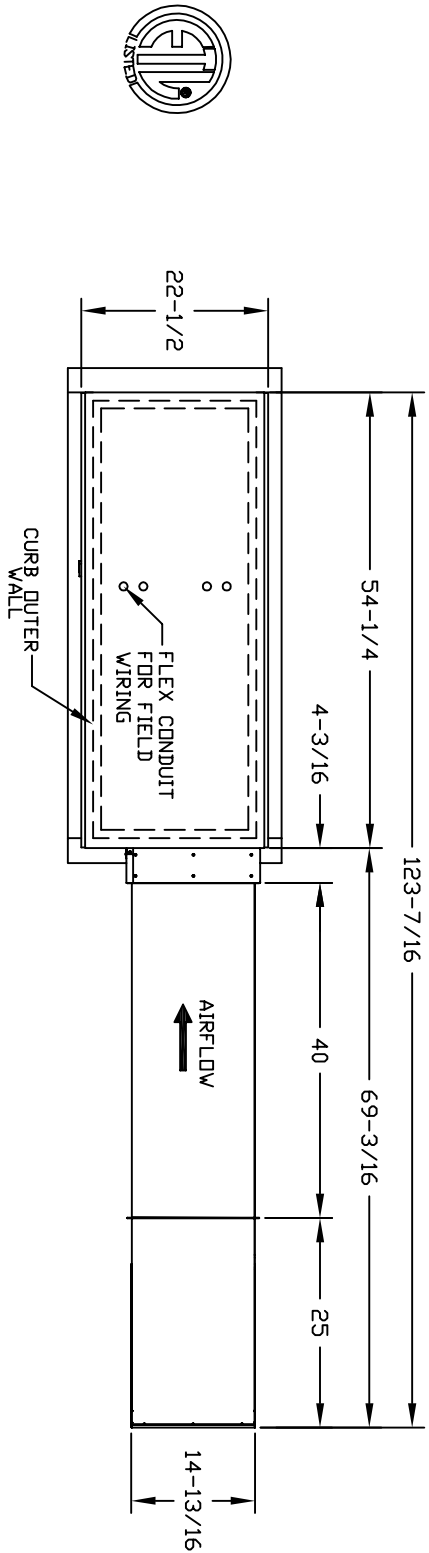


MODEL 76 OUTDOOR SIDE DISCHARGE DIRECT FIRED HEATER WITH FILTER, TRUNK-LINE AND SCREEN INTAKE

STL VBD76SMH
REV#4 07/28/2016



Direct Fired DF7 Profile Plate Assembly

Direct Fired Profile Plate Specifications:

Description: Direct fired burners shall have patented (US Patent No. US662953B2) self-adjusting profile plates that allow burners to maintain a constant flame height and temperature regardless of the gas pressure. The profile plates shall allow burners to achieve clean combustion by limiting by-product levels to a maximum of 5ppm of carbon monoxide (CO), and 0.5ppm of nitrogen dioxide (NO2).

Application:

Spring-loaded burner profile plates are engineered to automatically react to the momentum of a fresh air stream, without the need for any motors or actuators to mechanically adjust the plates. With this feature, all DF units are designed for demand control ventilation (DCV) requirements.

Certifications:

All profile plate assemblies shall be included in the DF unit's ETL listing and comply with combine safety standards ANSI Z83.4 and CSA 3.7 (non-recirculating DF heaters) and ANSI Z83.18 (recirculating DF heaters).

General Construction:

- Profile plates shall be formed from G90 galvanized steel.
- Profile plates shall vary in size per unit.
- Profile plates shall be installed in the same plane as the discharge of the burner.
- Design shall incorporate properly torqued, permanently mounted spring hinges.
- Spring hinges shall be made from plated steel.

UNIT INFORMATION:

MODEL	WEIGHT	BURNER LENGTH	BTU LOW	BTU HIGH	GAS PRESSURE	CFM RANGE	FILTER SIZE & QTY	MAX. FILTER VELOCITY
76	370lbs	6'	18	225000	5" WC	14" WC	16"x20"x2" (1)	1600 CFM = 914 FPM

ROOF OPENING 2" SMALLER THAN CURB DIMENSION

ALL DIMENSIONS ARE NOMINAL AND GIVEN IN INCHES.

WARRANTY: THREE YEAR LIMITED WARRANTY ON PARTS