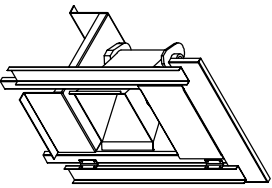
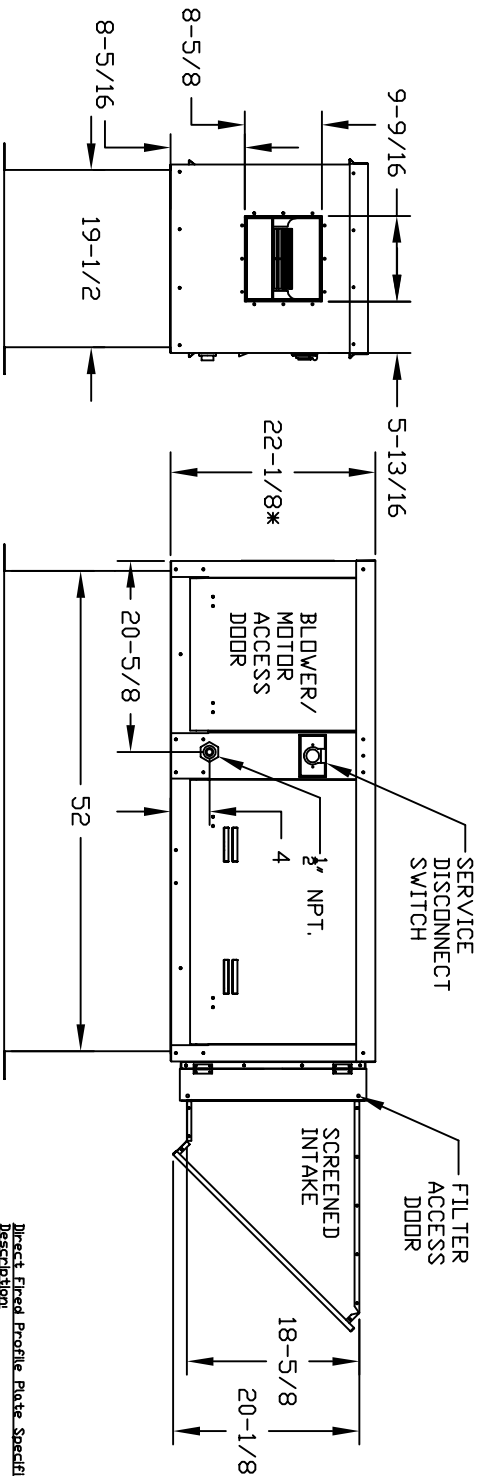
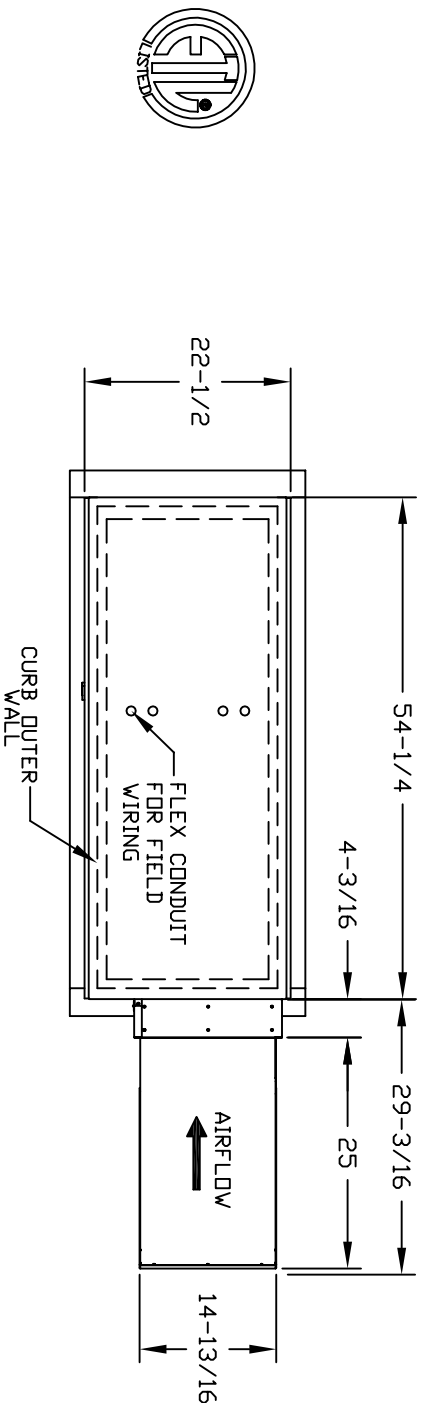


MODEL 76 OUTDOOR SIDE DISCHARGE DIRECT FIRED HEATER WITH FILTER AND SCREEN INTAKE

SIVB76SAH
REV.04 07/28/201



Direct Fired (DF) Profile Plate Assembly

UNIT INFORMATION.

	BTU RANGE (MBH)			GAS PRESSURE		CFM RANGE		FILTERS	
MODEL	WEIGHT	BURNER LENGTH	BTU LOW	BTU HIGH	MIN	MAX	MIN	MAX	MAX. FILTER VELOCITY
76	305 Lbs	6'	18	225000	5" WC	14" WC	600	1600	16"x20"x2" (1) @1600 CFM = 914 FPM

ROOF OPENING 2" SMALLER THAN CURB DIMENSION

ALL DIMENSIONS ARE NOMINAL AND GIVEN IN INCHES.

WARM 2 THERM TR TUBE DIMENSIONS IT LISTED UNDER DIRECT F I TH POSITION

Direct Fired Profile Plate Specifications:

Description:
Direct fired burners shall have patented U.S. Patent No. US6629238B2, self-adjusting profile plates designed to ensure proper air velocity and pressure drop across the burner. Profile plates shall allow burners to achieve clean combustion by limiting by-product levels to a maximum of 50ppm of carbon monoxide (CO), and 50ppm of nitrogen dioxide (NO2).

Application:

Spring-loaded burner profile plates are engineered to automatically react to the momentum of a fresh air stream, without the need for any motors or actuators to mechanically adjust the plates with this feature, all DF units are designed for demand control ventilation (DCV) requirements.

Certifications:

All profile plate assemblies shall be included in the DF unit's ETL listing and comply with combine safety standards ANSI Z83.4 and CSA 3.7 (non-recirculating DF heaters) and ANSI Z83.18 (recirculating DF heaters).

General Construction:

- Profile plates shall be formed from G90 galvanized steel.
- Profile plates shall vary in size per unit.
- Profile plates shall be mounted in the same plane as the discharge of the burner.
- Design shall incorporate properly torqued permanently mounted spring hinges.
- Spring hinges shall be made from plated steel.