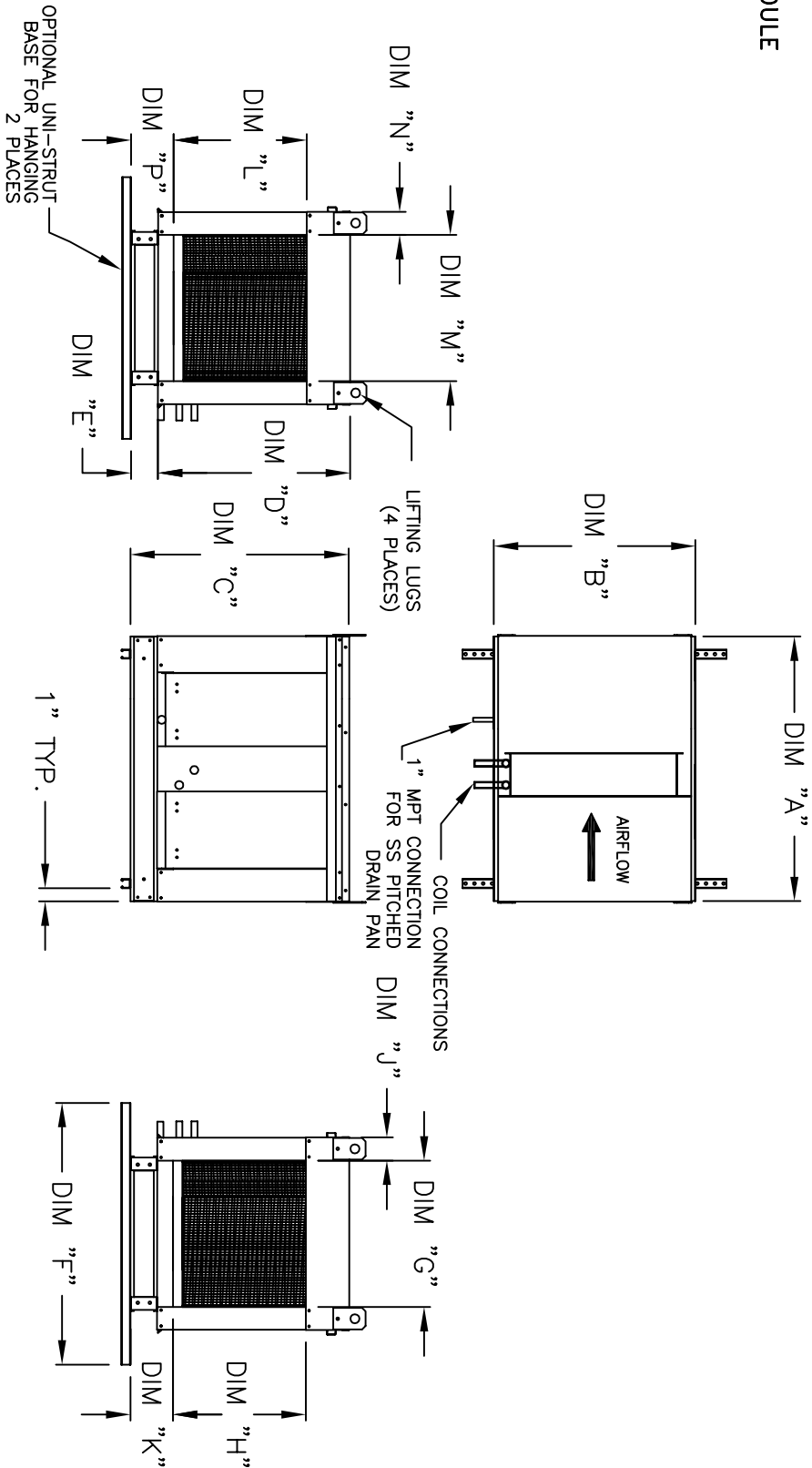


DX COIL MODULE

DXM
REV#9 06/15/201



ALL DIMENSIONS ARE NOMINAL AND GIVEN IN INCHES.

MODEL	WEIGHT	UNIT DIMENSIONS										INTAKE OPENING					DISCHARGE OPENING												
		A	B	C	D	E	F	G	H	J	K	L	M	N	P	A	B	C	D	E	F	G	H	J	K	L	M	N	P
DXM1	355 LBS	42-1/8	39-1/2	42-3/4	39-1/8	3-3/4	48	16	17-1/2	11	5-3/4	17-1/2	16	11	5-3/4	11	5-3/4	11	5-3/4	11	5-3/4	11	5-3/4	11	5-3/4	11	5-3/4	11	5-3/4
DXM2	430 LBS	42-1/8	49-3/8	47-3/4	44	3-3/4	60	22-3/4	29-3/4	12-5/8	5-3/4	29-3/4	22-3/4	30	29-5/8	11-1/2	7-3/8	29-5/8	11-1/2	7-3/8	29-5/8	11-1/2	7-3/8	29-5/8	11-1/2	7-3/8	29-5/8	11-1/2	7-3/8
DXM3	505 LBS	42-1/8	54-1/2	56-3/8	51-1/8	5-1/4	72	30	36-3/4	12-1/2	7-3/8	36-3/4	34	34	36-3/4	12-1/2	7-3/8	36-3/4	12-1/2	7-3/8	36-3/4	12-1/2	7-3/8	36-3/4	12-1/2	7-3/8	36-3/4	12-1/2	7-3/8
DXM4	780 LBS	54-3/16	60-1/2	64-3/8	59-1/8	5-1/4	72	34	41-1/4	12-1/2	7-3/8	41-1/4	34	34	41-1/4	12-1/2	7-3/8	41-1/4	12-1/2	7-3/8	41-1/4	12-1/2	7-3/8	41-1/4	12-1/2	7-3/8	41-1/4	12-1/2	7-3/8
DXM5	905 LBS	54-3/16	79-1/2	68-1/2	63-3/16	5-1/4	96	43	45-1/4	17-1/2	7-3/8	45-1/4	43	43	45-1/4	17-1/2	7-3/8	45-1/4	17-1/2	7-3/8	45-1/4	17-1/2	7-3/8	45-1/4	17-1/2	7-3/8	45-1/4	17-1/2	7-3/8