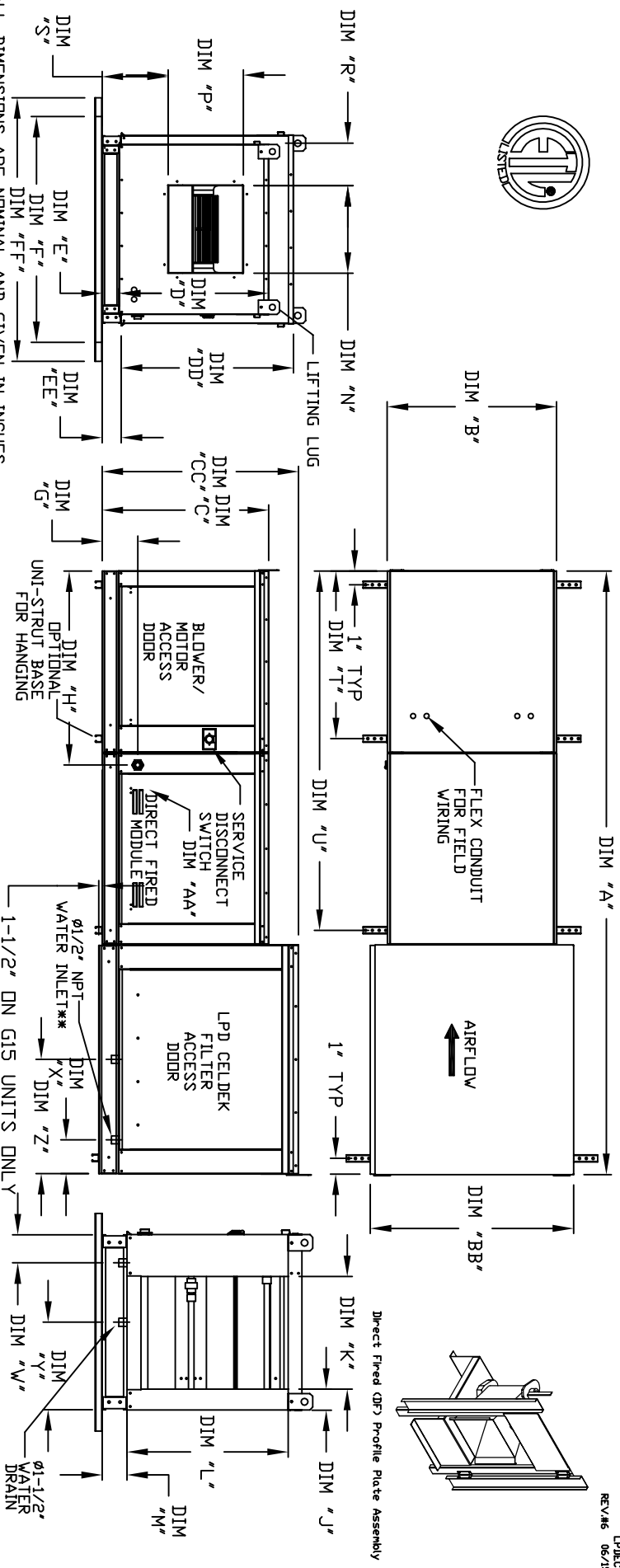


MODULAR INDOOR SIDE DISCHARGE DIRECT FIRED HEATER WITH LPD EVAPORATIVE COOLER



REV #6 06/15/2015  
LPDCEP5AH

ALL DIMENSIONS ARE NOMINAL AND GIVEN IN INCHES.

MODEL	UNIT DIMENSIONS												INTAKE OPENING												DISCHARGE OPENING												WATER INLET DRAIN											
	A	B	BB	C	CC	D	DD	E	EE	F	FF	G	H	J	K	M	N	P	S	T	U	V	X	Y	Z																							
D.250-G10	106-5/8	27-3/8	36-3/4	29-3/4	36-3/4	26-1/16	33	3-3/4	43-3/4	436	48	17-13/16	34-13/16	5-1/8	24-3/4	28-7/8	5-3/4	13-1/4	11-1/2	6-3/8	11-7/8	31-1/8	73-1/4	4-1/2	6-1/4	18	16																					
D.500-G10	106-5/8	27-3/8	36-3/4	29-3/4	36-3/4	26-1/16	33	3-3/4	43-3/4	436	48	17-13/16	34-13/16	5-1/8	24-3/4	28-7/8	5-3/4	13-1/4	11-1/2	6-3/8	11-7/8	31-1/8	73-1/4	4-1/2	6-1/4	18	16																					
D.250-G15	120-5/8	37-3/8	40-3/4	36-3/4	43-3/8	33-1/16	38-1/8	3-3/4	45-1/4	448	60	17-13/16	42-13/16	4-5/8	29-1/4	33-7/8	7/8	12-1/2	18-3/4	16	8-5/8	14-1/16	39-1/8	81-1/4	4-1/2	5-3/4	20	19																				
D.500-G15	120-5/8	37-3/8	40-3/4	36-3/4	43-3/8	33-1/16	38-1/8	3-3/4	45-1/4	448	60	17-13/16	42-13/16	4-5/8	29-1/4	33-7/8	7/8	12-1/2	18-3/4	16	8-5/8	14-1/16	39-1/8	81-1/4	4-1/2	5-3/4	20	19																				
D.750-G15	120-5/8	37-3/8	40-3/4	36-3/4	43-3/8	33-1/16	38-1/8	3-3/4	45-1/4	448	60	17-13/16	42-13/16	4-5/8	29-1/4	33-7/8	7/8	12-1/2	18-3/4	16	8-5/8	14-1/16	39-1/8	81-1/4	4-1/2	5-3/4	20	19																				
D.500-G18	122-3/4	41-3/8	47-7/8	43-3/8	51-3/8	38-1/16	46-1/8	5-1/4	51-1/4	60	60	9-1/2	47-13/16	4-5/8	36-1/4	41-7/8	1-1/2	22	19	9	7-7/8	44-1/8	86-1/4	4-1/2	5-3/4	23-1/2	17-1/2	17-1/2																				
D.750-G18	122-3/4	41-3/8	47-7/8	43-3/8	51-3/8	38-1/16	46-1/8	5-1/4	51-1/4	60	60	9-1/2	47-13/16	4-5/8	36-1/4	41-7/8	1-1/2	22	19	9	7-7/8	44-1/8	86-1/4	4-1/2	5-3/4	23-1/2	17-1/2	17-1/2																				
D.1000-G18	122-3/4	41-3/8	47-7/8	43-3/8	51-3/8	38-1/16	46-1/8	5-1/4	51-1/4	60	60	9-1/2	47-13/16	4-5/8	36-1/4	41-7/8	1-1/2	22	19	9	7-7/8	44-1/8	86-1/4	4-1/2	5-3/4	23-1/2	17-1/2	17-1/2																				
D.1500-G18	122-3/4	41-3/8	47-7/8	43-3/8	51-3/8	38-1/16	46-1/8	5-1/4	51-1/4	60	60	9-1/2	47-13/16	4-5/8	36-1/4	41-7/8	1-1/2	22	19	9	7-7/8	44-1/8	86-1/4	4-1/2	5-3/4	23-1/2	17-1/2	17-1/2																				
D.2000-G18	122-3/4	41-3/8	47-7/8	43-3/8	51-3/8	38-1/16	46-1/8	5-1/4	51-1/4	60	60	9-1/2	47-13/16	4-5/8	36-1/4	41-7/8	1-1/2	22	19	9	7-7/8	44-1/8	86-1/4	4-1/2	5-3/4	23-1/2	17-1/2	17-1/2																				
D.2500-G18	122-3/4	41-3/8	47-7/8	43-3/8	51-3/8	38-1/16	46-1/8	5-1/4	51-1/4	60	60	9-1/2	47-13/16	4-5/8	36-1/4	41-7/8	1-1/2	22	19	9	7-7/8	44-1/8	86-1/4	4-1/2	5-3/4	23-1/2	17-1/2	17-1/2																				
D.2500-G25	163-7/8	59-3/16	71-1/4	68-3/8	83-1/8	53-1/8	53-1/8	5-1/4	72-1/2	90	113-3/4	76-7/16	76-7/16	4-5/8	63-1/4	71-1/2	3-3/8	31-3/8	13-3/16	21-1/4	73-3/16	127-3/8	84-1/2	5-3/4	37-1/2	17-1/2	17-1/2																					

MODEL	BURNER			BTU RANGE (MBH)		GAS PRESSURE		GAS CONNECTION		CELDIX EVAPORATIVE COOLING UNIT	
	LENGTH	BTU LOW	BTU HIGH	MIN	MAX	"AM" (NPT)	WT.	WT.	WT.	WT.	WT.
D.250-G10	6"	18	275	7" WC	14" WC	3/4	725	25" x 32" x 12"	20	6.5	GPH
D.500-G10	12"	18	550	7" WC	14" WC	3/4	730	25" x 32" x 12"	20	6.5	GPH
D.250-G15	6"	18	275	7" WC	14" WC	3/4	1005	30" x 36" x 12"	28	8.4	GPH
D.500-G15	12"	18	550	7" WC	14" WC	3/4	1010	30" x 36" x 12"	28	8.4	GPH
D.750-G15	12"	27.5	825	7" WC	14" WC	1	1015	30" x 36" x 12"	28	8.4	GPH
D.500-G18	12"	18	550	7" WC	14" WC	1	1180	38" x 43" x 12"	35	10.15	GPH
D.750-G18	12"	27.5	825	7" WC	14" WC	1	1185	38" x 43" x 12"	35	10.15	GPH
D.1000-G18	24"	36.6	1100	7" WC	14" WC	1	1190	38" x 43" x 12"	35	10.15	GPH
D.1500-G18	24"	45.8	1375	7" WC	5 PSI	1-1/4	1805	45" x 54" x 12"	42	12.6	GPH
D.2000-G25	48"	73.3	2200	7" WC	5 PSI	1-1/2	2435	45" x 72" x 12"	57	20.1	GPH
D.2500-G25	60"	91.6	2750	7" WC	5 PSI	1-1/2	2450	45" x 72" x 12"	57	20.1	GPH

**Direct Fired Profile Plate Specifications:**  
 Description: Direct fired burner's shall have patented (US Patent No. US66292382), self-adjusting profile plates designed to ensure proper air velocity and pressure drop across the burner. Profile plates shall allow burners to achieve clean combustion by limiting by-products to a maximum of 5ppm of carbon monoxide (CO), and 50ppm of nitrogen dioxide (NO2).  
 Application: Spring-loaded burner profile plates are engineered to automatically react to the movement of the burner body to provide a constant air velocity for clean combustion.  
 With this feature, all DP units are designed for demand control ventilation (DCV) requirements.  
 Certifications: All profile plate assemblies shall be included in the DP unit's ETL listing and comply with combined ASHRAE 90.1 and ASHRAE 62.1 requirements.  
 General Construction: Profile plates shall be formed from G90 galvanized steel.  
 Profile plates shall vary in size per unit.  
 Profile plates shall be formed from the same plate as the discharge of the burner.  
 Design shall incorporate properly torqued, permanently mounted spring hinges.  
 Spring hinges shall be made from plated steel.

\*\*\*MAX. EVAP WATER PRESSURE = 50 PSI @ 70 DEG. F