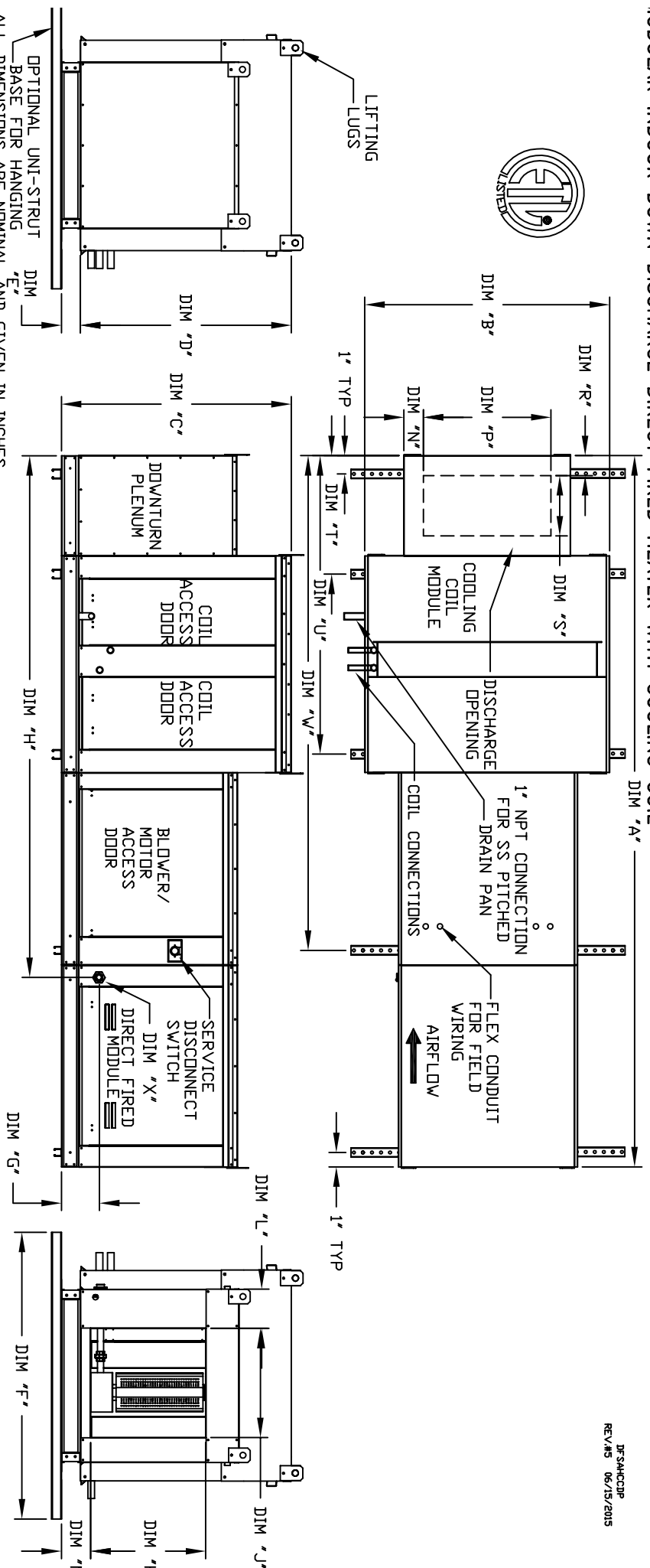


MODULAR INDOOR DOWN DISCHARGE DIRECT FIRED HEATER WITH COOLING COIL

DFSAHCCDP
REV#5 06/15/2015



MODEL	WEIGHT	UNIT DIMENSIONS																			
		A	B	C	D	E	F	G	H	J	K	L	M	N	P	R	S	T	U	V	
D.250-G10	985 LBS	135	39-3/8	42-3/4	39	3-3/4	48	7-13/16	95	7/16	16	18	8-1/8	5-3/4	6-1/8	13-7/8	3-1/4	11-1/2	19-1/4	59-3/8	91-1/2
D.500-G10	990 LBS	135	39-3/8	42-3/4	39	3-3/4	48	7-13/16	99-7/16	16	18	18	8-1/8	5-3/4	6-1/8	13-7/8	3-1/4	11-1/2	19-1/4	59-3/8	91-1/2
D.250-G15	1320 LBS	149	49-3/8	47-3/4	44	3-3/4	60	7-13/16	109-7/16	22-3/4	24	24	8-1/8	5-3/4	6-7/8	22-3/8	3	18	25-1/4	65-3/8	105-1/2
D.500-G15	1325 LBS	149	49-3/8	47-3/4	44	3-3/4	60	7-13/16	109-7/16	22-3/4	24	24	8-1/8	5-3/4	6-7/8	22-3/8	3	18	25-1/4	65-3/8	105-1/2
D.750-G15	1330 LBS	149	49-3/8	47-3/4	44	3-3/4	60	7-13/16	109-7/16	22-3/4	24	24	8-1/8	5-3/4	6-7/8	22-3/8	3	18	25-1/4	65-3/8	105-1/2
D.500-G18	1525 LBS	154	54-3/8	56-3/8	51-1/8	5-1/4	72	9-1/2	114-7/16	30	30	30	8-1/8	7-1/2	8-7/8	22-3/8	3	18	25-1/4	65-3/8	110-1/2
D.750-G18	1530 LBS	154	54-3/8	56-3/8	51-1/8	5-1/4	72	9-1/2	114-7/16	30	30	30	8-1/8	7-1/2	8-7/8	22-3/8	3	18	25-1/4	65-3/8	110-1/2
D.1000-G18	1535 LBS	154	54-3/8	56-3/8	51-1/8	5-1/4	72	9-1/2	114-7/16	30	30	30	8-1/8	7-1/2	8-7/8	22-3/8	3	18	25-1/4	65-3/8	110-1/2
D.1000-G20	203 LBS	203	3-1/16	60-7/16	64-3/8	59-1/8	5-1/4	72	13-9/16	151	34	36	10-3/16	7-1/2	7-7/8	31-1/2	3-1/4	23-1/2	31-1/4	83-7/16	147-5/8
D.1500-G20	2410 LBS	203	3-1/16	60-7/16	64-3/8	59-1/8	5-1/4	72	13-9/16	151	34	36	10-3/16	7-1/2	7-7/8	31-1/2	3-1/4	23-1/2	31-1/4	83-7/16	147-5/8
D.2000-G25	3070 LBS	213	3-1/16	79-7/16	68-7/16	63-3/16	5-1/4	96	13-3/4	161-1/8	43	43	10-3/16	7-1/2	13-1/4	31-1/2	3-1/4	23-1/2	31-1/4	83-7/16	157-5/8
D.2500-G25	3085 LBS	213	3-1/16	79-7/16	68-7/16	63-3/16	5-1/4	96	13-3/4	161-1/8	43	43	10-3/16	7-1/2	13-1/4	31-1/2	3-1/4	23-1/2	31-1/4	83-7/16	157-5/8

MODEL	BTU RANGE (MBH)	GAS PRESSURE			GAS CONNECTION
		MIN	MAX	'U' (NPT)	
D.250-G10	6"	18	27.5	14" WC	3/4
D.500-G10	12"	18	5.50	14" WC	3/4
D.250-G15	6"	18	27.5	14" WC	1
D.500-G15	12"	18	5.50	14" WC	1
D.750-G15	18"	27.5	8.25	14" WC	1
D.500-G18	12"	18	5.50	14" WC	1
D.750-G18	18"	27.5	8.25	14" WC	1
D.1000-G18	24"	36.6	11.00	14" WC	1
D.1000-G20	24"	36.6	11.00	5 PSI	1-1/4
D.1500-G20	30"	45.8	13.75	5 PSI	1-1/4
D.2000-G25	48"	73.3	22.00	5 PSI	1-1/2
D.2500-G25	60"	91.6	27.50	5 PSI	1-1/2

Direct Fired Profile Plate Specifications

Direct fired burners shall have patented US Patent No. US6692382, self-adjusting profile plates designed to ensure proper air velocity and pressure drop across the burner. Profile plates shall allow burners to achieve clean combustion by limiting by-product levels to a maximum of 5ppm of carbon monoxide (CO), and 0.5ppm of nitrogen dioxide (NO2).

Applications:

Spring-loaded burner profile plates are engineered to automatically react to the momentum of a fresh air stream, without the need for any motors or actuators to mechanically adjust them. With this feature, all DF units are designed for demand control ventilation (DCV) requirements.

Specifications:

All profile plate assemblies shall be included in the DF unit's ETL listing and comply with combined safety standards ANSI Z83.4 and CSA 3.7 (non-recirculating DF heaters) and ANSI Z83.18 (recirculating DF heaters).

General Construction:

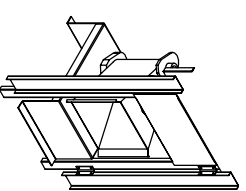
Profile plates shall be formed from G90 galvanized steel.

Profile plates shall be mounted on a spring loaded hinge.

Profile plates shall be mounted along the same plane as the discharge of the burner.

Design shall incorporate properly torqued, permanently mounted spring hinges.

Spring hinges shall be made from plated steel.



Direct Fired DF Profile Plate Assembly