

ALL DIMENSIONS ARE NOMINAL AND GIVEN IN INCHES.

MAX. ROOF OPENING 2" SMALLER THAN CURB OUTSIDE DIMENSION

CURB/RAIL COMBINATION USED IN PLACE OF SINGLE CURB ON UNITS WITH 20" AND 25" BLOWERS

| MODEL      | UNIT DIMENSIONS |     |         |         |         |        |         |          |          |    | CURB     |        |        |         |         | DISCHARGE OPENING |        |             |                  |          | WATER INLET      |                 |                 |                  |          | DRAIN OPENING    |                 |                 |                 |                   |             |
|------------|-----------------|-----|---------|---------|---------|--------|---------|----------|----------|----|----------|--------|--------|---------|---------|-------------------|--------|-------------|------------------|----------|------------------|-----------------|-----------------|------------------|----------|------------------|-----------------|-----------------|-----------------|-------------------|-------------|
|            | A               | B   | C       | D       | E       | F      | G       | H        | J        | K  | N        | P      | R      | S       | V       | X                 | Y      | TOT. WEIGHT | MEDIA SIZE & QTY | VEL.     | MAX. CFM/NOZZLES | MAX. FLOW RATE  | TOT. WEIGHT     | MEDIA SIZE & QTY | VEL.     | MAX. CFM/NOZZLES | MAX. FLOW RATE  | V-BANK FILTER   | UNIT DIMENSIONS | DISCHARGE OPENING | WATER INLET |
| D-250-G10  | 138             | 7/8 | 29-3/4  | 26-1/16 | 3-3/4   | 44-3/8 | 7-13/16 | 34-13/16 | 21       | 71 | 13-1/4   | 11-1/2 | 3-7/8  | 5-9/16  | 4-1/2   | 38 1/2            | 13     | 48 1/4      | 12               | 3.9 GPH  | 825 LBS          | 20"x25"x2" (3)  | 1050 FPM        | 12               | 12.6 GPH | 16"x20"x2" (8)   | 20"x25"x2" (12) | 20"x25"x2" (12) | 20"x25"x2" (12) | 20"x25"x2" (12)   |             |
| D-500-G10  | 138             | 7/8 | 29-3/8  | 26-1/16 | 3-3/4   | 44-3/8 | 7-13/16 | 34-13/16 | 21       | 71 | 13-1/4   | 11-1/2 | 3-7/8  | 5-9/16  | 4-1/2   | 38 1/2            | 13     | 48 1/4      | 12               | 3.9 GPH  | 825 LBS          | 20"x25"x2" (3)  | 1050 FPM        | 12               | 12.6 GPH | 16"x20"x2" (8)   | 20"x25"x2" (12) | 20"x25"x2" (12) | 20"x25"x2" (12) |                   |             |
| D-250-G15  | 146             | 7/8 | 37-3/8  | 36-3/4  | 33-1/16 | 3-3/4  | 53-5/8  | 7-13/16  | 42-13/16 | 31 | 79       | 18-3/4 | 16     | 6-1/8   | 8-5/16  | 4-1/2             | 38 1/2 | 18          | 48 1/4           | 20       | 6.5 GPH          | 1155 LBS        | 25"x32"x12" (8) | 1080 FPM         | 20       | 16.5 GPH         | 20"x25"x2" (8)  | 20"x25"x2" (12) | 20"x25"x2" (12) | 20"x25"x2" (12)   |             |
| D-500-G15  | 146             | 7/8 | 37-3/8  | 36-3/4  | 33-1/16 | 3-3/4  | 53-5/8  | 7-13/16  | 42-13/16 | 31 | 79       | 18-3/4 | 16     | 6-1/8   | 8-5/16  | 4-1/2             | 38 1/2 | 18          | 48 1/4           | 20       | 6.5 GPH          | 1155 LBS        | 25"x32"x12" (8) | 1080 FPM         | 20       | 16.5 GPH         | 20"x25"x2" (8)  | 20"x25"x2" (12) | 20"x25"x2" (12) | 20"x25"x2" (12)   |             |
| D-750-G15  | 146             | 7/8 | 37-3/8  | 36-3/4  | 33-1/16 | 3-3/4  | 53-5/8  | 7-13/16  | 42-13/16 | 31 | 79       | 18-3/4 | 16     | 6-1/8   | 8-5/16  | 4-1/2             | 38 1/2 | 18          | 48 1/4           | 20       | 6.5 GPH          | 1155 LBS        | 25"x32"x12" (8) | 1080 FPM         | 20       | 16.5 GPH         | 20"x25"x2" (8)  | 20"x25"x2" (12) | 20"x25"x2" (12) | 20"x25"x2" (12)   |             |
| D-500-G18  | 163             | 7/8 | 41-3/8  | 43-3/8  | 38-1/16 | 5-1/4  | 51-5/8  | 9-1/2    | 47-13/16 | 35 | 84       | 22     | 19     | 6-1/2   | 10-5/16 | 4-1/2             | 44     | 20          | 57 1/4           | 28       | 8.4 GPH          | 1380 LBS        | 30"x36"x12" (8) | 1067 FPM         | 28       | 16.5 GPH         | 20"x25"x2" (8)  | 20"x25"x2" (12) | 20"x25"x2" (12) | 20"x25"x2" (12)   |             |
| D-750-G18  | 163             | 7/8 | 41-3/8  | 43-3/8  | 38-1/16 | 5-1/4  | 51-5/8  | 9-1/2    | 47-13/16 | 35 | 84       | 22     | 19     | 6-1/2   | 10-5/16 | 4-1/2             | 44     | 20          | 57 1/4           | 28       | 8.4 GPH          | 1380 LBS        | 30"x36"x12" (8) | 1067 FPM         | 28       | 16.5 GPH         | 20"x25"x2" (8)  | 20"x25"x2" (12) | 20"x25"x2" (12) | 20"x25"x2" (12)   |             |
| D-1000-G18 | 189             | 1/4 | 48-7/16 | 51-3/8  | 46-1/8  | 5-1/4  | 76-3/8  | 13-9/16  | 66-5/16  | 42 | 115-3/16 | 24-7/8 | 24-7/8 | 10-5/8  | 4-1/2   | 41 1/8            | 23-1/2 | 52 7/8      | 35               | 10.5 GPH | 2200 LBS         | 16"x20"x2" (15) | 572 FPM         | 24               | 16.5 GPH | 20"x25"x2" (8)   | 20"x25"x2" (12) | 20"x25"x2" (12) | 20"x25"x2" (12) |                   |             |
| D-1500-G20 | 189             | 1/4 | 48-7/16 | 51-3/8  | 46-1/8  | 5-1/4  | 76-3/8  | 13-9/16  | 66-5/16  | 42 | 115-3/16 | 24-7/8 | 24-7/8 | 10-5/8  | 4-1/2   | 41 1/8            | 23-1/2 | 52 7/8      | 35               | 10.5 GPH | 2200 LBS         | 16"x20"x2" (15) | 572 FPM         | 24               | 16.5 GPH | 20"x25"x2" (8)   | 20"x25"x2" (12) | 20"x25"x2" (12) | 20"x25"x2" (12) |                   |             |
| D-2000-G25 | 199             | 1/4 | 59-3/16 | 58-3/8  | 53-1/8  | 5-1/4  | 71-3/8  | 13-3/4   | 76-7/16  | 42 | 125-3/16 | 31-3/8 | 31-3/8 | 11-1/16 | 4-1/2   | 41 1/8            | 23-1/2 | 52 7/8      | 35               | 10.5 GPH | 2875 LBS         | 20"x25"x2" (12) | 638 FPM         | 30               | 12.6 GPH | 20"x25"x2" (12)  | 20"x25"x2" (12) | 20"x25"x2" (12) | 20"x25"x2" (12) |                   |             |
| D-500-925  | 199             | 1/4 | 59-3/16 | 58-3/8  | 53-1/8  | 5-1/4  | 71-3/8  | 13-3/4   | 76-7/16  | 42 | 125-3/16 | 31-3/8 | 31-3/8 | 11-1/16 | 4-1/2   | 41 1/8            | 23-1/2 | 52 7/8      | 35               | 10.5 GPH | 2875 LBS         | 20"x25"x2" (12) | 638 FPM         | 30               | 12.6 GPH | 20"x25"x2" (12)  | 20"x25"x2" (12) | 20"x25"x2" (12) | 20"x25"x2" (12) |                   |             |

| MODEL      | BURNER |      |       | GAS PRESSURE |     | GAS CONNECTION | STANDARD EVAPORATIVE COOLING UNIT |             |                  |         | CELDEK EVAPORATIVE COOLING UNIT |                |             |                  |                  |                  |                |          |                 |                 |                 |                 |
|------------|--------|------|-------|--------------|-----|----------------|-----------------------------------|-------------|------------------|---------|---------------------------------|----------------|-------------|------------------|------------------|------------------|----------------|----------|-----------------|-----------------|-----------------|-----------------|
|            | BTU    | LOW  | BTU   | HIGH         | MIN |                | MAX                               | TOT. WEIGHT | MEDIA SIZE & QTY | VEL.    | MAX. CFM/NOZZLES                | MAX. FLOW RATE | TOT. WEIGHT | MEDIA SIZE & QTY | VEL.             | MAX. CFM/NOZZLES | MAX. FLOW RATE |          |                 |                 |                 |                 |
| D-250-G10  | 6"     | 18   | 2/5   | 7"           | WC  | 14" WC         | 825                               | LBS         | 20"x25"x2" (3)   | 406 FPM | 6                               | 3 GPH          | 825         | LBS              | 20"x24"x12"      | 1050 FPM         | 12             | 3.9 GPH  | 16"x20"x2" (8)  | 20"x25"x2" (12) | 20"x25"x2" (12) | 20"x25"x2" (12) |
| D-500-G10  | 6"     | 18   | 2/5   | 7"           | WC  | 14" WC         | 1155                              | LBS         | 16"x20"x2" (8)   | 429 FPM | 10                              | 5 GPH          | 1155        | LBS              | 25"x32"x12" (8)  | 1080 FPM         | 20             | 6.5 GPH  | 16"x20"x2" (8)  | 20"x25"x2" (12) | 20"x25"x2" (12) | 20"x25"x2" (12) |
| D-250-G15  | 6"     | 18   | 2/5   | 7"           | WC  | 14" WC         | 1155                              | LBS         | 16"x20"x2" (8)   | 429 FPM | 10                              | 5 GPH          | 1155        | LBS              | 25"x32"x12" (8)  | 1080 FPM         | 20             | 6.5 GPH  | 16"x20"x2" (8)  | 20"x25"x2" (12) | 20"x25"x2" (12) | 20"x25"x2" (12) |
| D-500-G15  | 6"     | 18   | 2/5   | 7"           | WC  | 14" WC         | 1155                              | LBS         | 16"x20"x2" (8)   | 429 FPM | 10                              | 5 GPH          | 1155        | LBS              | 25"x32"x12" (8)  | 1080 FPM         | 20             | 6.5 GPH  | 16"x20"x2" (8)  | 20"x25"x2" (12) | 20"x25"x2" (12) | 20"x25"x2" (12) |
| D-750-G18  | 12"    | 18   | 2/5   | 7"           | WC  | 14" WC         | 1375                              | LBS         | 20"x25"x2" (8)   | 348 FPM | 14                              | 7 GPH          | 1375        | LBS              | 30"x36"x12" (8)  | 1067 FPM         | 28             | 8.4 GPH  | 20"x25"x2" (8)  | 20"x25"x2" (12) | 20"x25"x2" (12) | 20"x25"x2" (12) |
| D-1000-G18 | 18"    | 27.5 | 8/25  | 7"           | WC  | 14" WC         | 1385                              | LBS         | 20"x25"x2" (8)   | 348 FPM | 14                              | 7 GPH          | 1375        | LBS              | 30"x36"x12" (8)  | 1067 FPM         | 28             | 8.4 GPH  | 20"x25"x2" (8)  | 20"x25"x2" (12) | 20"x25"x2" (12) | 20"x25"x2" (12) |
| D-1500-G20 | 24"    | 36.6 | 11/00 | 7"           | WC  | 5 PSI          | 2200                              | LBS         | 16"x20"x2" (15)  | 572 FPM | 24                              | 12 GPH         | 2170        | LBS              | 38"x43"x12" (15) | 1322 FPM         | 35             | 10.5 GPH | 16"x20"x2" (15) | 20"x25"x2" (12) | 20"x25"x2" (12) | 20"x25"x2" (12) |
| D-2000-G25 | 30"    | 45.8 | 13/75 | 7"           | WC  | 5 PSI          | 2875                              | LBS         | 16"x20"x2" (15)  | 572 FPM | 24                              | 12 GPH         | 2170        | LBS              | 38"x43"x12" (15) | 1322 FPM         | 35             | 10.5 GPH | 16"x20"x2" (15) | 20"x25"x2" (12) | 20"x25"x2" (12) | 20"x25"x2" (12) |
| D-500-925  | 48"    | 73.3 | 22/00 | 7"           | WC  | 5 PSI          | 2875                              | LBS         | 20"x25"x2" (12)  | 638 FPM | 30                              | 15 GPH         | 2875        | LBS              | 45"x54"x12" (12) | 1304 FPM         | 42             | 12.6 GPH | 20"x25"x2" (12) | 20"x25"x2" (12) | 20"x25"x2" (12) | 20"x25"x2" (12) |
| D-500-925  | 60"    | 91.6 | 27/50 | 7"           | WC  | 5 PSI          | 2875                              | LBS         | 20"x25"x2" (12)  | 638 FPM | 30                              | 15 GPH         | 2875        | LBS              | 45"x54"x12" (12) | 1304 FPM         | 42             | 12.6 GPH | 20"x25"x2" (12) | 20"x25"x2" (12) | 20"x25"x2" (12) | 20"x25"x2" (12) |

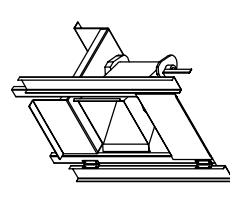
Direct Fired Profile Plate Specifications

Direct fired burners shall have patented US Patent No. US6692382B2, self-adjusting profile plates designed to ensure proper air velocity and pressure drop across the burner. Profile plates shall allow burners to achieve clean combustion by limiting by-product levels to a maximum of 30ppm of carbon monoxide (CO), and 50ppm of nitrogen dioxide (NO2).

Application: Spring-loaded burner profile plates are engineered to automatically react to the momentum of the burner flame to maintain a consistent air velocity and pressure drop across the burner. With this feature, all DF units are designed for demand control ventilation (DCV) requirements.

Direct fired burner assemblies shall be included in the DF unit's ETL listing and comply with combined safety standards ANSI Z89.4 and CSA 37 (non-recirculating DF heaters) and ANSI Z83.18 (recirculating DF heaters).

General Construction: Burner profile plates are formed from G90 galvanized steel. Profile plates shall vary in size per unit. Design shall incorporate properly torqued, permanently mounted spring hinges.



Direct Fired (DF) Profile Plate Assembly