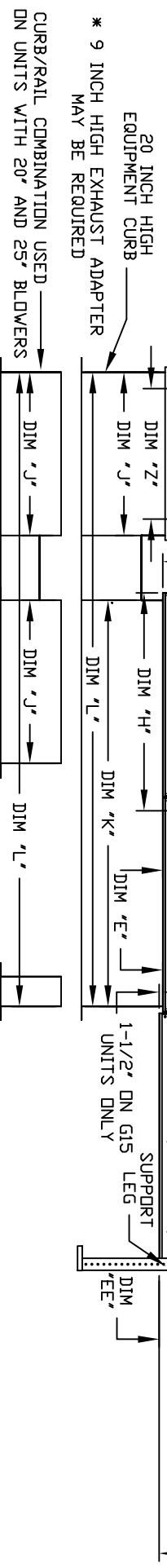
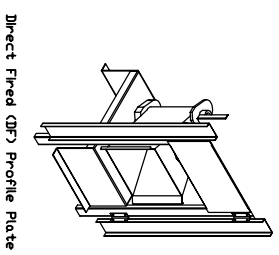


MODEL #	X	Y	Z *
BDU2	14-1/2	22	19
BDU1			
BDU5	18-1/2	27-1/4	21
BDU3			
BDU3	21-1/2	30-1/4	21
BDU0			
BDU5	23-1/2	33-3/4	24-3/4
BDU5			
BDU5	23-1/2	33-3/8	28
BDU8	29-1/2	38-7/8	28
BDU20	30-5/8	43-3/8	33
BDU24			
BDU30	33-1/2	52-3/4	40



MODEL	A	B	BB	C	CC	D	DD	E	EE	F	G	H	J	K	L	M	N	P	R	S	T	U	V
D250-G10	106-5/8	27-3/8	36-3/4	29-3/4	36-3/4	26-1/6	33	3-3/4	3-3/4	53-5/8	7-13/16	34-13/16	21	71	106	13-1/4	11-1/2	3-7/8	36-3/4	4-1/2	6-1/4	18	16
D500-G10	106-5/8	27-3/8	36-3/4	29-3/4	36-3/4	26-1/6	33	3-3/4	3-3/4	53-5/8	7-13/16	34-13/16	21	71	106	13-1/4	11-1/2	3-7/8	36-3/4	4-1/2	6-1/4	18	16
D250-G15	120-5/8	37-3/8	40-3/4	36-3/4	43-3/8	33-1/6	38-1/8	3-3/4	5-1/4	51-5/8	7-13/16	42-13/16	31	79	124	18-3/4	16	6-1/8	50-1/2	4-1/2	5-3/4	20	19
D500-G15	120-5/8	37-3/8	40-3/4	36-3/4	43-3/8	33-1/6	38-1/8	3-3/4	5-1/4	51-5/8	7-13/16	42-13/16	31	79	124	18-3/4	16	6-1/8	50-1/2	4-1/2	5-3/4	20	19
D750-G15	120-5/8	37-3/8	40-3/4	36-3/4	43-3/8	33-1/6	38-1/8	3-3/4	5-1/4	51-5/8	7-13/16	42-13/16	31	79	124	18-3/4	16	6-1/8	50-1/2	4-1/2	5-3/4	20	19
D500-G18	122-3/4	41-3/8	47-7/8	43-3/8	51-3/8	38-1/6	46-1/8	5-1/4	5-1/4	76-3/8	9-1/2	47-13/16	35	84	133	22	19	6-1/2	56	4-1/2	5-3/4	23-1/2	17-1/2
D750-G18	122-3/4	41-3/8	47-7/8	43-3/8	51-3/8	38-1/6	46-1/8	5-1/4	5-1/4	76-3/8	9-1/2	47-13/16	35	84	133	22	19	6-1/2	56	4-1/2	5-3/4	23-1/2	17-1/2
D1000-G18	122-3/4	41-3/8	47-7/8	43-3/8	51-3/8	38-1/6	46-1/8	5-1/4	5-1/4	76-3/8	9-1/2	47-13/16	35	84	133	22	19	6-1/2	56	4-1/2	5-3/4	23-1/2	17-1/2
D1500-G18	153-7/8	48-7/16	58-5/8	51-3/8	58-3/8	46-1/8	53-1/8	5-1/4	5-1/4	139-9/16	13-9/16	66-5/16	42	115-3/16	171-3/16	24-7/8	24-7/8	8-9/16	57-1/8	4-1/2	5-3/4	28-7/8	17-1/2
D1500-G20	153-7/8	48-7/16	58-5/8	51-3/8	58-3/8	46-1/8	53-1/8	5-1/4	5-1/4	139-9/16	13-9/16	66-5/16	42	115-3/16	171-3/16	24-7/8	24-7/8	8-9/16	57-1/8	4-1/2	5-3/4	28-7/8	17-1/2

MODEL	BURNER LENGTH	BTU RANGE (AMB)		GAS PRESSURE		GAS CONNECTION		CELD EK EVAPORATIVE COOLING UNIT		CURB		DISCHARGE OPENING		WATER INLET		DRAIN OPENING						
		BTU LOW	BTU HIGH	MIN	MAX	"W" (NPT)	"W" (NPT)	TOT. WEIGHT	MEDIA SIZE & QTY	NOZZLES	MAX. FLOW RATE	IN TAKE HOOD FILTER SIZE & QTY	N	P	R	S	T	U	V			
D250-G10	6"	18	550	7" VC	14" VC	3/4	3/4	790 LBS	25"x32"x12"	20	6.5 GPH	20"x25"x2" (3)										
D500-G10	6"	18	275	7" VC	14" VC	3/4	3/4	795 LBS	25"x32"x12"	20	6.5 GPH	20"x25"x2" (3)										
D250-G15	6"	18	275	7" VC	14" VC	1	1	1095 LBS	30"x36"x12"	28	8.4 GPH	16"x20"x2" (6)										
D500-G15	6"	18	550	7" VC	14" VC	1	1	1105 LBS	30"x36"x12"	28	8.4 GPH	16"x20"x2" (6)										
D750-G15	18"	27.5	885	7" VC	14" VC	1	1	1105 LBS	30"x36"x12"	28	8.4 GPH	16"x20"x2" (6)										
D500-G18	18"	18	550	7" VC	14" VC	1	1	1395 LBS	38"x43"x12"	35	10.5 GPH	16"x20"x2" (10)										
D750-G18	18"	27.5	885	7" VC	14" VC	1	1	1395 LBS	38"x43"x12"	35	10.5 GPH	16"x20"x2" (10)										
D1000-G18	24"	36.6	1100	7" VC	14" VC	1	1	1400 LBS	38"x43"x12"	35	10.5 GPH	16"x20"x2" (10)										
D1500-G18	24"	36.6	1100	7" VC	14" VC	1	1-1/4	2015 LBS	45"x54"x12"	42	12.6 GPH	20"x25"x2" (8)										
D1500-G20	30"	45.8	1375	7" VC	5 PSI	1-1/4	1-1/4	2030 LBS	45"x54"x12"	42	12.6 GPH	20"x25"x2" (8)										



ALL DIMENSIONS ARE NOMINAL AND GIVEN IN INCHES.

\* 9 INCH HIGH EXHAUST ADAPTER MAY BE REQUIRED

CURB/RAIL COMBINATION USED ON UNITS WITH 20" AND 25" BLOWERS

MAX. ROOF OPENING 2' SMALLER THAN CURB OUTSIDE DIMENSION

\*\*MAX. EVAP WATER PRESSURE = 50 PSI @ 70 DEG. F

Direct Fired (DF) Profile Plate Assembly

Description: Direct fired burner shall have patented US Patent No. US6692282, self-adjusting profile plates designed to ensure proper air velocity and pressure drop across the burner. Profile plates shall allow burners to achieve clean combustion by limiting by-product levels to a maximum of 5ppm of carbon monoxide (CO), and 0.5ppm of nitrogen dioxide (NO2).

Application: Spring-loaded burner profile plates are engineered to automatically react to the momentum of a fresh air stream, without the need for any motors or actuators to mechanically adjust them. With this feature, all DF units are designed for demand control ventilation (DCV) requirements.

Certifications: All profile plate assemblies shall be included in the DF unit's ETL listing and comply with combined safety standards ANSI Z83.4 and CSA 3.7 (non-recirculating DF heaters) and ANSI Z83.18 (recirculating DF heaters).

General Construction: Profile plates shall be made from G90 galvanized steel. Profile plates shall vary in size per unit. Profile plates shall be mounted along the same plane as the discharge of the burner. Design shall incorporate properly torqued, permanently mounted spring hinges. Spring hinges shall be made from plated steel.