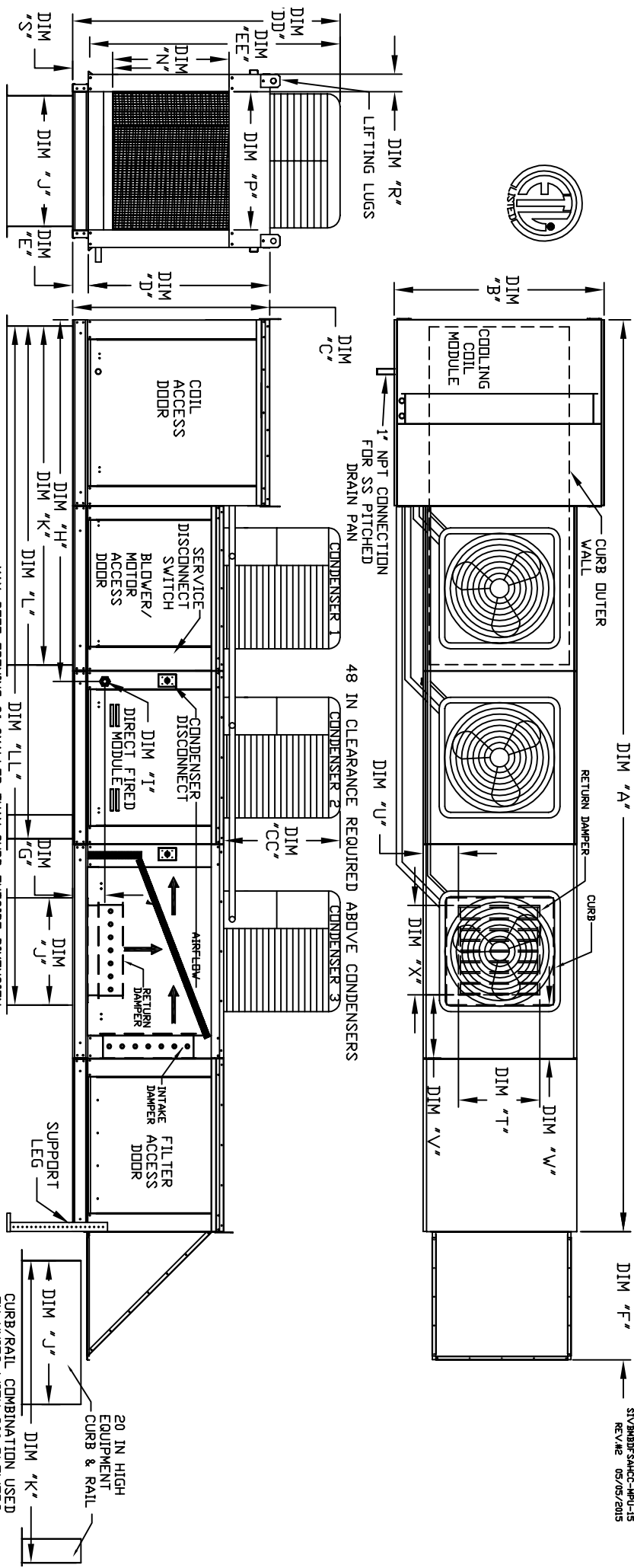


MODULAR OUTDOOR SIDE DISCHARGE DIRECT FIRED RECIRCULATING HEATER WITH COOLING, V-BANK AND SCREEN INTAKE

STV3B9F5ACCC-HPU-15  
REV A2 05/05/2015



ALL DIMENSIONS ARE NOMINAL AND GIVEN IN INCHES.

MODEL	WEIGHT	UNIT DIMENSIONS																				
		A	B	C	D	E	F	G	H	J	K	L	N	P	R	S	T	U	V	W	X	
D.500-G18	1880 LBS	210-1/8	54-3/8	56-3/8	51-1/8	5-1/4	34-3/16	9-1/2	90-1/16	35	84	126-1/4	165-11/16	29-5/8	30	11-1/2	7-3/8	28	8	7	4-1/2	30
D.750-G18	1885 LBS	210-1/8	54-3/8	56-3/8	51-1/8	5-1/4	34-3/16	9-1/2	90-1/16	35	84	126-1/4	165-11/16	29-5/8	30	11-1/2	7-3/8	28	8	7	4-1/2	30
D.1000-G18	1890 LBS	210-1/8	54-3/8	56-3/8	51-1/8	5-1/4	34-3/16	9-1/2	90-1/16	35	84	126-1/4	165-11/16	29-5/8	30	11-1/2	7-3/8	28	8	7	4-1/2	30
D.1000-920	3015 LBS	262-1/2	60-7/16	64-3/8	59-1/8	5-1/4	47-1/4	13-9/16	120-5/8	42	115-3/16	169-1/2	217-1/2	36-3/4	34	12-1/2	7-3/8	33	10	11	8	36
D.1500-920	3030 LBS	262-1/2	60-7/16	64-3/8	59-1/8	5-1/4	47-1/4	13-9/16	120-5/8	42	115-3/16	169-1/2	217-1/2	36-3/4	34	12-1/2	7-3/8	33	10	11	8	36

MODEL	BTU RANGE (KBH)	GAS PRESSURE		GAS CONNECTION	TONNAGE RANGE		FILTER SIZE & QTY		MAX. FILTER VELOCITY	OPTIONAL MIXING BOX FILTERS	
		MIN	MAX		MIN	MAX	MIN	MAX		MIN	MAX
D.500-G18	12"	18	550	7" WC	14" WC	1	15 Ton	15 Ton	15 Ton	15" x 20" x 2" (4)	15" x 15" x 2" (2)
D.750-G18	12"	275	825	7" WC	14" WC	1	15 Ton	15 Ton	15 Ton	15" x 20" x 2" (4)	15" x 15" x 2" (2)
D.1000-G18	24"	366	1100	7" WC	14" WC	1	15 Ton	15 Ton	15 Ton	15" x 20" x 2" (4)	15" x 15" x 2" (2)
D.1000-920	24"	366	1100	7" WC	14" WC	1	15 Ton	15 Ton	15 Ton	15" x 20" x 2" (4)	15" x 15" x 2" (2)
D.1500-920	30"	458	1375	7" WC	5 PSI	1-1/4	15 Ton	15 Ton	15 Ton	18" x 25" x 2" (4)	16" x 20" x 2" (2)

MODEL	WEIGHT*	CONDENSER INFORMATION			CC	DD	EE
		#1	#2	#3			
15 TON-G18	1888 LBS	5 TON	5 TON	5 TON	29-15/16	73-5/16	68-1/16
15 TON-920	1888 LBS	5 TON	5 TON	5 TON	29-15/16	94-5/16	89-1/16

**Direct Fired Profile Plate Specifications:**

- Direct fired burners shall have patented US Patent No. US6629523B2, self-adjusting profile plates designed to ensure proper air velocity and pressure drop across the burner. Profile plates shall allow burners to achieve clean combustion by limiting by-product levels to a maximum of 50ppm of carbon monoxide (CO), and 50ppm of nitrogen dioxide (NO2).
- Application:** Spring-loaded burner profile plates are engineered to automatically react to the momentum of a fresh air stream, without the need for any motors or actuators to mechanically adjust them with this feature, all DF units are designed for demand control ventilation (DCV) requirements.
- Certifications:** All profile plate assemblies shall be included in the DF unit's ETL listing and comply with combined safety standards ANSI Z89.4 and CSA 3.7 Non-recirculating DF heaters and ANSI Z89.18 recirculating DF heaters.
- General Construction:** Profile plates shall be formed from G90 galvanized steel.
- Profile plates shall vary in size per unit.
- Profile plates shall be mounted on the same plane as the discharge of the burner.
- Profile plates shall be mounted on the burner.
- Profile plates shall be permanently mounted spring hinges.
- Spring hinges shall be made from plated steel.

**Direct Fired (DF) Profile Plate Assembly**