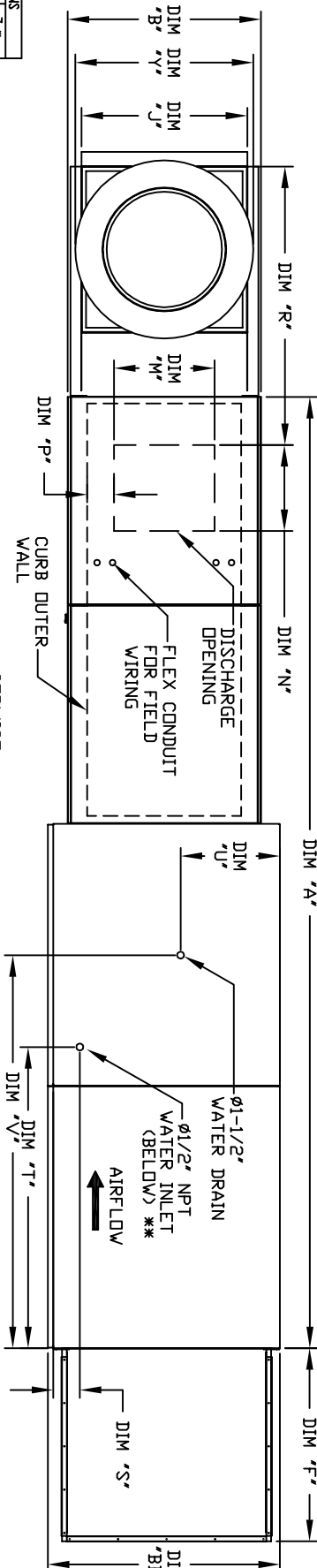


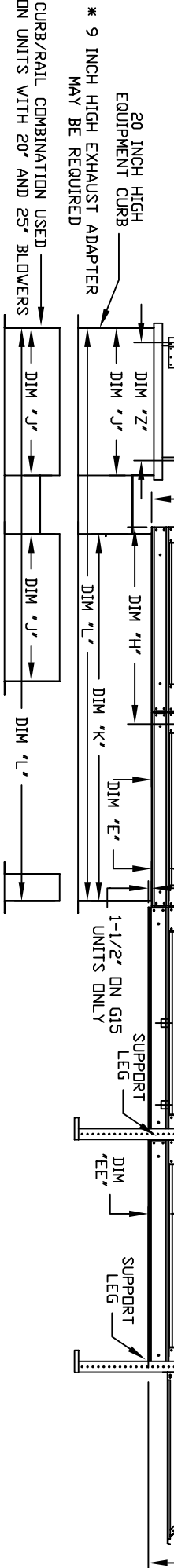
MODULAR OUTDOOR DOWN DISCHARGE DIRECT FIRED HEATER-ROOF TOP PACKAGE WITH V-BANK, LPD EVAPORATIVE COOLER AND SCREEN INTAKE

S1VB.PRC.DIM.DIART
REV.03 05/05/20



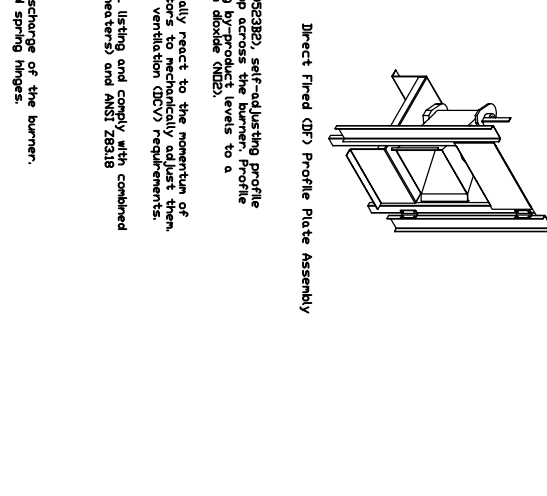
EXHAUST UNIT DIMENSIONS

MODEL #	X	Y	Z
NC200FA	14-1/2	22	19
NC200FA	18-1/2	27-1/4	21
NC200FA	21-1/2	30-1/4	21
NC200FA	23	33-3/4	24-3/4
NC200FA	23-1/2	33-3/8	28
NC200FA	28-1/2	38-7/8	28
NC200FA	30-3/8	43-3/8	33
NC200FA	33-1/2	52-3/4	40



ALL DIMENSIONS ARE NOMINAL AND GIVEN IN INCHES.

MODEL	UNIT DIMENSIONS			CURB													DISCHARGE OPENING				WATER INLET		DRAIN OPENING	
	A	B	BB	C	CC	D	DD	E	EE	F	G	H	J	K	L	M	N	P	R	S	T	U	V	
D250-G10	138-7/8	27-3/8	36-3/4	29-3/4	36-3/4	26-1/16	33	3-3/4	3-3/4	30-5/16	7-13/16	34-13/16	21	71	106	13-1/4	11-1/2	3-7/8	36-3/4	4-1/2	38-1/2	18	48-1/4	
D1500-G10	138-7/8	27-3/8	36-3/4	29-3/4	36-3/4	26-1/16	33	3-3/4	3-3/4	30-5/16	7-13/16	34-13/16	21	71	106	13-1/4	11-1/2	3-7/8	36-3/4	4-1/2	38-1/2	18	48-1/4	
D1500-G15	158-7/8	37-3/8	40-3/4	36-3/4	43-3/8	33-1/16	38-1/8	5-1/4	34-3/16	7-13/16	42-13/16	31	79	124	18-3/4	16	6-1/8	50-1/2	4-1/2	44	20	57-1/4		
D1500-G15	158-7/8	37-3/8	40-3/4	36-3/4	43-3/8	33-1/16	38-1/8	5-1/4	34-3/16	7-13/16	42-13/16	31	79	124	18-3/4	16	6-1/8	50-1/2	4-1/2	44	20	57-1/4		
D1500-G18	158-7/8	37-3/8	40-3/4	36-3/4	43-3/8	33-1/16	38-1/8	5-1/4	34-3/16	7-13/16	42-13/16	31	79	124	18-3/4	16	6-1/8	50-1/2	4-1/2	44	20	57-1/4		
D1500-G18	158-7/8	37-3/8	40-3/4	36-3/4	43-3/8	33-1/16	38-1/8	5-1/4	34-3/16	7-13/16	42-13/16	31	79	124	18-3/4	16	6-1/8	50-1/2	4-1/2	44	20	57-1/4		
D1500-G18	158-7/8	37-3/8	40-3/4	36-3/4	43-3/8	33-1/16	38-1/8	5-1/4	34-3/16	7-13/16	42-13/16	31	79	124	18-3/4	16	6-1/8	50-1/2	4-1/2	44	20	57-1/4		
D1500-G18	158-7/8	37-3/8	40-3/4	36-3/4	43-3/8	33-1/16	38-1/8	5-1/4	34-3/16	7-13/16	42-13/16	31	79	124	18-3/4	16	6-1/8	50-1/2	4-1/2	44	20	57-1/4		
D1500-G20	189-1/4	48-7/16	58-5/8	51-3/8	58-3/8	46-1/8	53-1/8	5-1/4	49-5/16	13-9/16	66-5/16	42	115-3/16	171-3/16	24-7/8	24-7/8	8-9/16	57-1/8	4-1/2	41-1/8	23-1/2	52-7/8		
D1500-G20	189-1/4	48-7/16	58-5/8	51-3/8	58-3/8	46-1/8	53-1/8	5-1/4	49-5/16	13-9/16	66-5/16	42	115-3/16	171-3/16	24-7/8	24-7/8	8-9/16	57-1/8	4-1/2	41-1/8	23-1/2	52-7/8		
D1500-G20	189-1/4	48-7/16	58-5/8	51-3/8	58-3/8	46-1/8	53-1/8	5-1/4	49-5/16	13-9/16	66-5/16	42	115-3/16	171-3/16	24-7/8	24-7/8	8-9/16	57-1/8	4-1/2	41-1/8	23-1/2	52-7/8		



CELDEK EVAPORATIVE COOLING UNIT

CELDEK MEDIA SIZE & QTY

MAX. FLOW RATE

V-BANK FILTER SIZE & QTY

DESCRIPTION: Direct fired burners shall have patented (US Patent No. US6629538B2), self-adjusting profile plates designed to ensure proper air velocity and pressure drop across the burner. Profile plates shall allow burners to achieve clean combustion by linking by-products (levels) to a reduction of spm or carbon monoxide (CO), and Sippen or Retrogen divide (NDS).

ASSEMBLY: All burner profile plates are engineered to automatically react to the magnitude of air flow and pressure drop across the burner. The burner profile plates are designed to automatically adjust them. Within this feature, all DF units are designed for demand control ventilation (DCV) requirements.

GENERAL CONSTRUCTION: Profile plates shall be formed from 600 galvanized steel.

PROFILE PLATES: Profile plates shall vary in size per unit.

SAFETY: Profile plates shall be mounted along the same plane as the discharge of the burner.

DESIGN: Profile plates shall incorporate properly torqued, permanently mounted spring hinges.

MAX. ROOF OPENING 2" SMALLER THAN CURB OUTSIDE DIMENSION
**MAX. EVAP WATER PRESSURE = 50 PSI @ 70 DEG. F