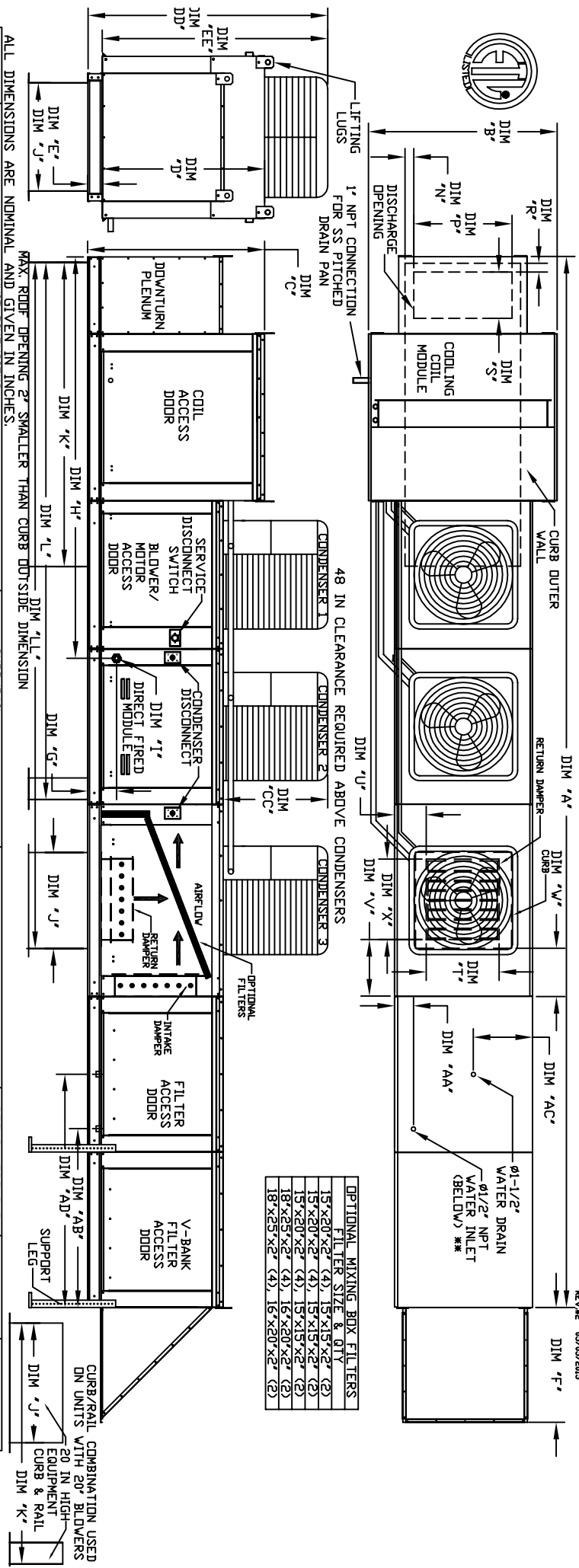


MODULAR OUTDOOR DOWN DISCHARGE DIRECT FIRED RECIRCULATING HEATER WITH COOLING, EVAPORATIVE COOLER INTAKE, V-BANK AND SCREEN INTAKE

ST/RECHDBR/SHACCP-44-15
REV. 02 05/05/2015



OPTIONAL MIXING BOX FILTERS

FILTER SIZE & QTY
15"x20"x2" (4)
15"x15"x2" (2)
15"x20"x2" (4)
15"x15"x2" (2)
15"x20"x2" (4)
15"x15"x2" (2)
18"x25"x2" (4)
16"x20"x2" (2)
18"x25"x2" (4)
16"x20"x2" (2)

ALL DIMENSIONS ARE NOMINAL AND GIVEN IN INCHES.

MODEL	A	B	C	D	E	F	G	H	J	K	L	N	P	R	S	T	U	V	X	AA	AB	AC	AD	
D-500-G18	272-3/4	54-3/8	56-3/8	51-1/8	5-1/4	34-3/16	9-1/2	114-7/16	35	84	150-5/8	190-1/16	6-5/16	22-3/8	1-1/2	18	28	8	7	30	4-1/2	44	20	57-1/4
D-750-G18	272-3/4	54-3/8	56-3/8	51-1/8	5-1/4	34-3/16	9-1/2	114-7/16	35	84	150-5/8	190-1/16	6-5/16	22-3/8	1-1/2	18	28	8	7	30	4-1/2	44	20	57-1/4
D-1000-G18	272-3/4	54-3/8	56-3/8	51-1/8	5-1/4	34-3/16	9-1/2	114-7/16	35	84	150-5/8	190-1/16	6-5/16	22-3/8	1-1/2	18	28	8	7	30	4-1/2	44	20	57-1/4
D-1000-920	328-1/4	60-7/16	64-3/8	59-1/8	5-1/4	47-1/4	13-9/16	151	42	115-3/16	199-7/8	247-7/8	5-1/4	31-1/2	1-3/16	23-1/2	33	10	11	36	4-1/2	41-1/8	23-1/2	32-7/8
D-1500-920	328-1/4	60-7/16	64-3/8	59-1/8	5-1/4	47-1/4	13-9/16	151	42	115-3/16	199-7/8	247-7/8	5-1/4	31-1/2	1-3/16	23-1/2	33	10	11	36	4-1/2	41-1/8	23-1/2	32-7/8

UNIT INFORMATION

MODEL	BURNER BTU/DV	BTU HIGH	GAS PRESSURE	GAS CONNECTION	TONNAGE RANGE
D-500-G18	18	550	7" WC	1"	15 Ton
D-750-G18	27.5	825	7" WC	1"	15 Ton
D-1000-G18	24	36.6	7" WC	1"	15 Ton
D-1000-920	24	36.6	7" WC	1"	15 Ton
D-1500-920	30	45.8	7" WC	1"	15 Ton

STANDARD EVAPORATIVE COOLING UNIT

MODEL	TOTAL WEIGHT	MEDIA SIZE & QTY	VEL. @ MAX. CFM	NOZZLES	MAX. FLOW RATE
D-500	250 LBS	20"x25"x2" (8)	348 FPM	14	7 GPH
D-750	250 LBS	20"x25"x2" (8)	348 FPM	14	7 GPH
D-1000	250 LBS	20"x25"x2" (8)	348 FPM	14	7 GPH
D-1500	350 LBS	16"x20"x2" (15)	572 FPM	24	12 GPH

FIELD EVAPORATIVE COOLING UNIT

MODEL	TOTAL WEIGHT	MEDIA SIZE & QTY	VEL. @ MAX. CFM	NOZZLES	MAX. FLOW RATE
D-500	250 LBS	30"x36"x12" (4)	1067 FPM	28	8.4 GPH
D-750	250 LBS	30"x36"x12" (4)	1067 FPM	28	8.4 GPH
D-1000	250 LBS	30"x36"x12" (4)	1067 FPM	28	8.4 GPH
D-1500	350 LBS	38"x43"x12" (4)	1322 FPM	35	10.15 GPH

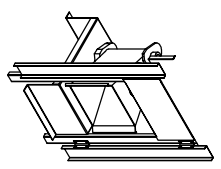
CONDENSER INFORMATION

MODEL	WEIGHT #	TONNAGE	CC	DD	EE
15 TON-G18	588 LBS	5 TON	29-15/16	73-5/16	68-1/16
15 TON-920	588 LBS	5 TON	29-15/16	94-5/16	89-1/16

MAX. CONDENSING UNIT WEIGHT TO WEIGHT IN TABLE ABOVE

****MAX. EVAP WATER PRESSURE = 50 PSI @ 70 DEG. F**

GENERAL CONSTRUCTION:
-Profile plates shall be formed from G90 galvanized steel.
-Profile plates shall be mounted along the same plane as the discharge of the burner.
-Design shall incorporate proper torque, permanently mounted spring hinges.
-Spring hinges shall be made from plated steel.



Direct Fired (DF) Profile Plate Assembly