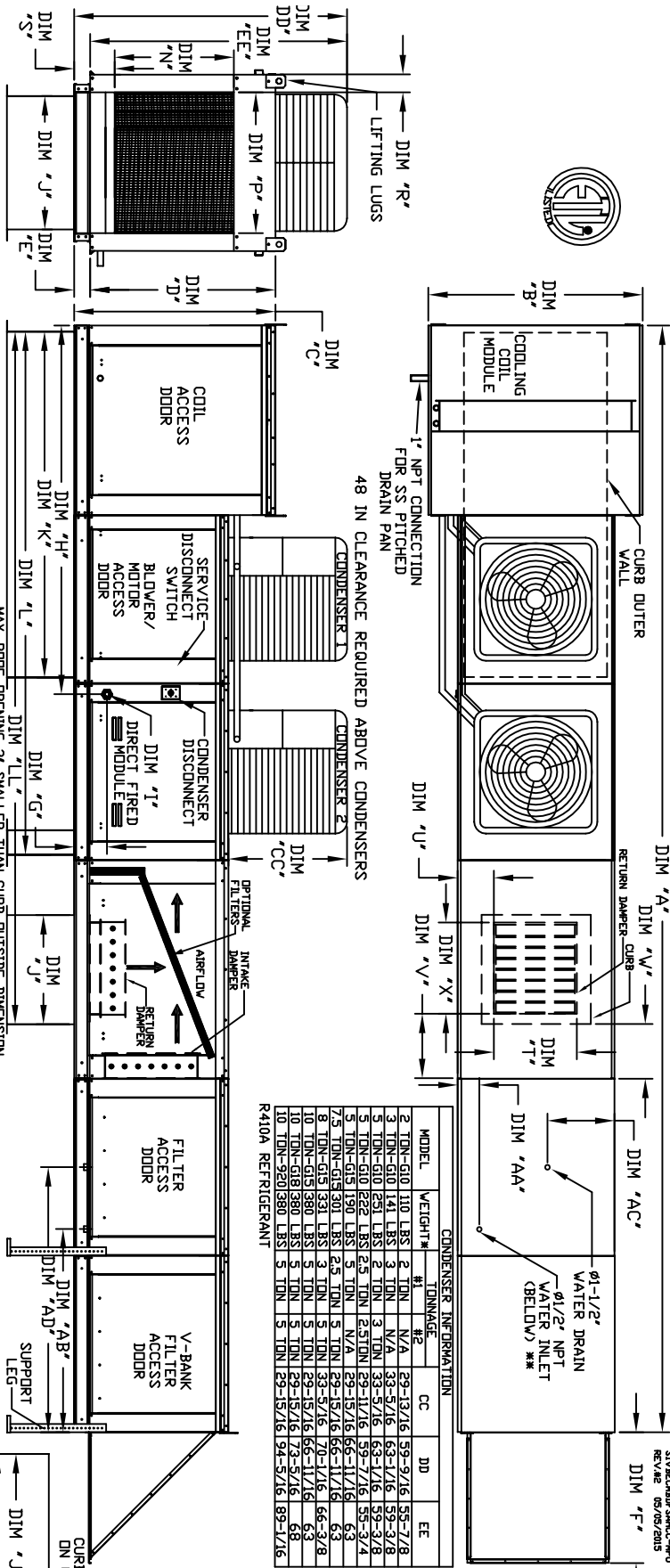


MODULAR OUTDOOR SIDE DISCHARGE DIRECT FIRED RECIRCULATING HEATER WITH COOLING, EVAPORATIVE COOLER INTAKE, V-BANK AND SCREEN INTAKE



CONDENSER INFORMATION

MODEL	WEIGHT*	#1	#2	CC	DD	EE
2-TON-G10	110 LBS	2 TON	N/A	29-13/16	59-9/16	59-3/8
3-TON-G10	141 LBS	3 TON	N/A	33-5/16	63-1/8	63-3/8
5-TON-G10	251 LBS	2 TON	3 TON	33-5/16	63-1/8	59-3/8
5-TON-G10	251 LBS	2 TON	2.5 TON	29-11/16	59-7/16	59-3/4
7-TON-G10	370 LBS	3 TON	N/A	29-11/16	59-7/16	59-3/4
7-TON-G10	370 LBS	2.5 TON	3 TON	29-11/16	59-7/16	59-3/4
10-TON-G10	510 LBS	3 TON	5 TON	29-11/16	60-1/8	60-1/8
10-TON-G10	360 LBS	3 TON	3 TON	29-11/16	60-1/8	60-1/8
10-TON-G18	360 LBS	3 TON	3 TON	29-11/16	62-5/16	62-5/16
10-TON-G20	360 LBS	3 TON	3 TON	29-11/16	62-5/16	62-5/16

R410A REFRIGERANT

MODEL	WEIGHT*	#1	#2	CC	DD	EE
2-TON-G10	110 LBS	2 TON	N/A	29-13/16	59-9/16	59-3/8
3-TON-G10	141 LBS	3 TON	N/A	33-5/16	63-1/8	63-3/8
5-TON-G10	251 LBS	2 TON	3 TON	33-5/16	63-1/8	59-3/8
5-TON-G10	251 LBS	2 TON	2.5 TON	29-11/16	59-7/16	59-3/4
7-TON-G10	370 LBS	3 TON	N/A	29-11/16	59-7/16	59-3/4
7-TON-G10	370 LBS	2.5 TON	3 TON	29-11/16	59-7/16	59-3/4
10-TON-G10	510 LBS	3 TON	5 TON	29-11/16	60-1/8	60-1/8
10-TON-G10	360 LBS	3 TON	3 TON	29-11/16	60-1/8	60-1/8
10-TON-G18	360 LBS	3 TON	3 TON	29-11/16	62-5/16	62-5/16
10-TON-G20	360 LBS	3 TON	3 TON	29-11/16	62-5/16	62-5/16

ALL DIMENSIONS ARE NOMINAL AND GIVEN IN INCHES.

MAX. ROOF OPENING 2" SMALLER THAN CURB OUTSIDE DIMENSION

CURB/RAIL COMBINATION USED ON UNITS WITH 20 IN HIGH EQUIPMENT CURB & RAIL

UNIT DIMENSIONS						
MODEL	A	B	C	D	E	F
D250-G10	223-3/8	39-3/8	42-3/4	39	3-3/4	42-3/8
D500-G10	223-3/8	39-3/8	42-3/4	39	3-3/4	42-3/8
D750-G15	231-3/8	49-3/8	47-3/4	44	3-3/4	50-5/16
D250-G15	231-3/8	49-3/8	47-3/4	44	3-3/4	50-5/16
D500-G15	231-3/8	49-3/8	47-3/4	44	3-3/4	50-5/16
D750-G15	231-3/8	49-3/8	47-3/4	44	3-3/4	50-5/16
D1000-G18	248-3/8	54-3/8	51-1/8	51	5-1/4	52-1/2
D1500-G20	291-7/8	60-7/16	64-3/8	56	5-1/4	67-1/2

GAS PRESSURE						
MODEL	MIN.	MAX.	MIN.	MAX.	MIN.	MAX.
D250-G10	18	18	14	14	2	5
D500-G10	18	18	14	14	2	5
D750-G15	18	18	14	14	2	5
D250-G15	18	18	14	14	2	5
D500-G15	18	18	14	14	2	5
D750-G15	18	18	14	14	2	5
D1000-G18	18	18	14	14	2	5
D1500-G20	18	18	14	14	2	5

TOWNAPE RANGE						
MODEL	MIN.	MAX.	MIN.	MAX.	MIN.	MAX.
D250-G10	3/4	3/4	1/2	1/2	2	5
D500-G10	3/4	3/4	1/2	1/2	2	5
D750-G15	3/4	3/4	1/2	1/2	2	5
D250-G15	3/4	3/4	1/2	1/2	2	5
D500-G15	3/4	3/4	1/2	1/2	2	5
D750-G15	3/4	3/4	1/2	1/2	2	5
D1000-G18	3/4	3/4	1/2	1/2	2	5
D1500-G20	3/4	3/4	1/2	1/2	2	5

STANDARD EVAPORATIVE COOLING UNIT											
MODEL	CONDENSER DISCONNECT	DIRECT FIRED MODULE	DISCHARGE OPENING	RETURN OPENING	WATER INLET	DRAIN OPENING	MAX. FLOW RATE	CONDENSER DISCONNECT	DIRECT FIRED MODULE	DISCHARGE OPENING	RETURN OPENING
1310 LBS	406 FPM	6	3 GPH	6	3 GPH	3	3 GPH	406 FPM	6	3 GPH	6
1770 LBS	459 FPM	10	5 GPH	10	5 GPH	5	5 GPH	459 FPM	10	5 GPH	10
2330 LBS	492 FPM	15	6 GPH	15	6 GPH	6	6 GPH	492 FPM	15	6 GPH	15
2900 LBS	518 FPM	20	7 GPH	20	7 GPH	7	7 GPH	518 FPM	20	7 GPH	20
3460 LBS	544 FPM	25	8 GPH	25	8 GPH	8	8 GPH	544 FPM	25	8 GPH	25
4020 LBS	570 FPM	30	9 GPH	30	9 GPH	9	9 GPH	570 FPM	30	9 GPH	30
4580 LBS	596 FPM	35	10 GPH	35	10 GPH	10	10 GPH	596 FPM	35	10 GPH	35
5140 LBS	622 FPM	40	11 GPH	40	11 GPH	11	11 GPH	622 FPM	40	11 GPH	40
5700 LBS	648 FPM	45	12 GPH	45	12 GPH	12	12 GPH	648 FPM	45	12 GPH	45

CELDEK EVAPORATIVE COOLING UNIT		
MODEL	CONDENSER DISCONNECT	DIRECT FIRED MODULE
1315 LBS	406 FPM	6
1775 LBS	459 FPM	10
2335 LBS	492 FPM	15
2895 LBS	518 FPM	20
3455 LBS	544 FPM	25
4015 LBS	570 FPM	30
4575 LBS	596 FPM	35
5135 LBS	622 FPM	40
5695 LBS	648 FPM	45

OPTIONAL MIXING BOX FILTERS		
FILTER SIZE & QTY	MAX. FILTER VELOCITY	MAX. FLOW RATE
20"x25"x2" (4)	348 FPM	348 FPM
10"x16"x2" (5)	348 FPM	348 FPM
16"x25"x2" (2)	348 FPM	348 FPM
20"x25"x2" (2)	348 FPM	348 FPM
16"x25"x2" (4)	348 FPM	348 FPM
20"x25"x2" (4)	348 FPM	348 FPM
16"x25"x2" (4)	348 FPM	348 FPM
18"x25"x2" (4)	348 FPM	348 FPM
16"x25"x2" (4)	348 FPM	348 FPM

GENERAL CONSTRUCTION:
 Profile plates shall be formed from 6061 aluminum steel.
 Profile plates shall vary in size per unit.
 Profile plates shall be mounted along the same plane as the discharge of the burner.
 Profile plates shall be permanently mounted on hinges.
 Springs hinges shall be made from plated steel.