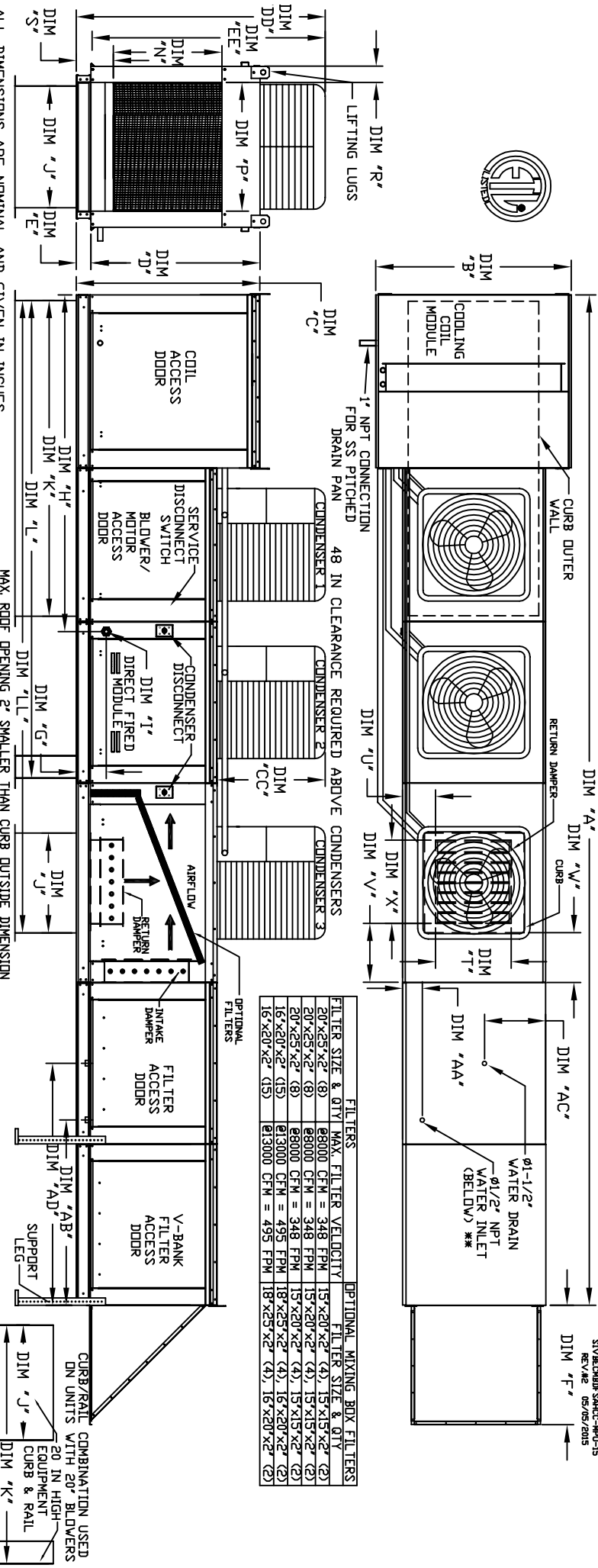


MODULAR OUTDOOR SIDE DISCHARGE DIRECT FIRED RECIRCULATING HEATER WITH COOLING, EVAPORATIVE COOLER INTAKE, V-BANK AND SCREEN INTAKE

REVISED 05/05/2015



ALL DIMENSIONS ARE NOMINAL AND GIVEN IN INCHES.

MAX ROOF OPENING 2" SMALLER THAN CURB OUTSIDE DIMENSION

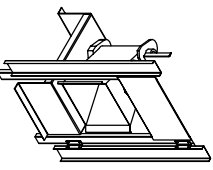
COMBINATION USED ON UNITS WITH 20" BLOWERS EQUIPMENT CURB & RAIL

MODEL	UNIT DIMENSIONS											
	A	B	C	D	E	F	G	H	J	K	L	N
D-500-G18	248-3/8	54-3/8	56-3/8	51-1/8	5-1/4	34-3/16	9-1/2	90-1/16	35	84	126-1/4	203-5/16
D-750-G18	248-3/8	54-3/8	56-3/8	51-1/8	5-1/4	34-3/16	9-1/2	90-1/16	35	84	126-1/4	203-5/16
D-1000-G18	248-3/8	54-3/8	56-3/8	51-1/8	5-1/4	34-3/16	9-1/2	90-1/16	35	84	126-1/4	203-5/16
D-1000-920	297-7/8	60-7/16	64-3/8	59-1/8	5-1/4	47-1/4	13-9/16	120-5/8	42	115-3/16	169-1/2	252-7/8
D-1500-920	297-7/8	60-7/16	64-3/8	59-1/8	5-1/4	47-1/4	13-9/16	120-5/8	42	115-3/16	169-1/2	252-7/8

MODEL	BURNER		GAS PRESSURE		TONGUE RANGE		STANDARD EVAPORATIVE COOLING UNIT		CELDEK EVAPORATIVE COOLING UNIT			
	BTU	LOW	BTU	HIGH	MIN	MAX	TOT. WEIGHT	MEDIA SIZE & QTY	VEL. & MAX. CFM	NOZZLES	MAX. FLOW RATE	
D-500-G18	18	550	7"	WC	14"	WC	2120	LBS	20"x25"x2" (8)	348	FPM	14
D-750-G18	18	825	7"	WC	14"	WC	2125	LBS	20"x25"x2" (8)	348	FPM	14
D-1000-G18	24	1100	7"	WC	14"	WC	2130	LBS	20"x25"x2" (8)	348	FPM	14
D-1000-920	24	1100	7"	WC	14"	WC	3343	LBS	16"x20"x2" (15)	572	FPM	24
D-1500-920	30	458	7"	WC	5	PSI	3360	LBS	16"x20"x2" (15)	572	FPM	24

MODEL	CONDENSER INFORMATION					CC	DD	EE
	#1	#2	#3	TONNAGE	TONNAGE			
15 TON-G18S88	5	5	5	5	5	29-15/16	73-5/16	68-1/16
15 TON-920S88	5	5	5	5	5	29-15/16	94-5/16	89-1/16

Direct Fired Profile Plate Specifications:
 Direct fired burners shall have patented US Patent No. US6692632B2, self-adjusting profile plates designed to ensure proper air velocity and pressure drop across the burner. Profile plates shall allow burners to achieve clean combustion by lifting by-product levels to a minimum of 50ppm of carbon monoxide (CO), and 50ppm of nitrogen dioxide (NO2).
 Application:
 Self-adjusting burner profile plates are engineered to automatically react to the operation of the burner. The burner profile plates are designed to automatically adjust the burner air stream. The burner profile plates are designed to automatically adjust the burner air stream. The burner profile plates are designed to automatically adjust the burner air stream. With this feature, all DF units are designed for demand control ventilation (DCV) requirements.
 Certifications:
 All profile plate assemblies shall be included in the DF unit's ETL listing and comply with combined safety standards ANSI Z83.4 and CSA 3.7 (non-recirculating DF heaters) and ANSI Z83.18 (recirculating DF heaters).
 General Construction:
 -Profile plates shall be formed from G90 galvanized steel.
 -Profile plates shall vary in size per unit.
 -Profile plates shall be attached to the burner assembly with a self-adjusting spring.
 -Design shall incorporate properly engaged, permanently mounted spring fingers.
 -Spring fingers shall be made from plated steel.



Direct Fired DF Profile Plate Assembly