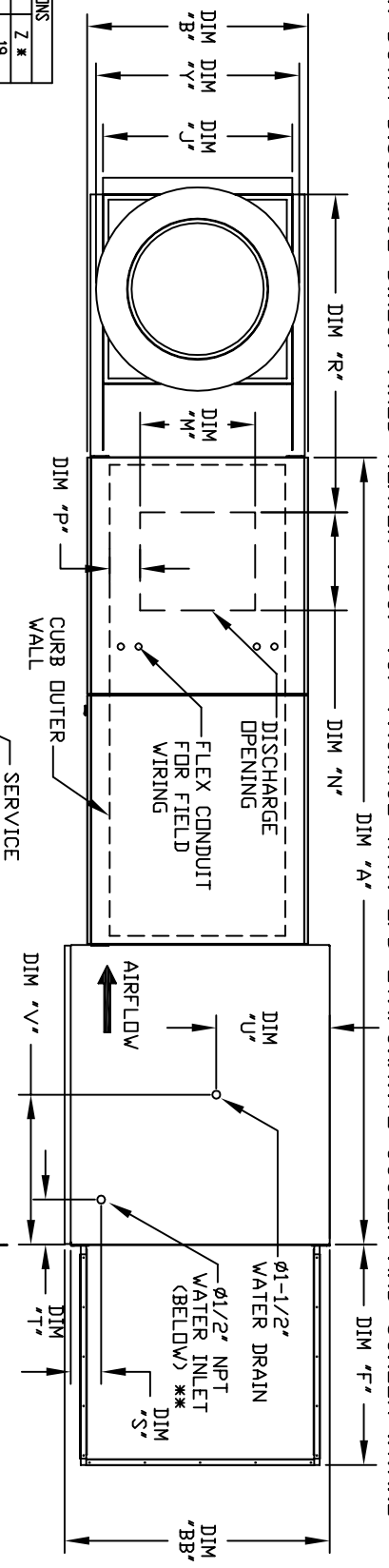
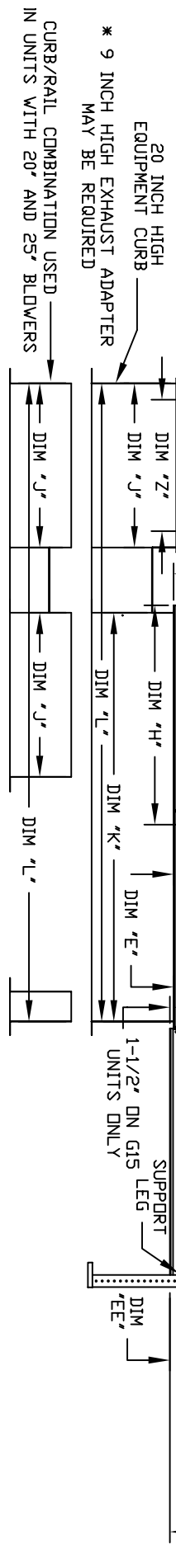


# MODULAR OUTDOOR DOWN DISCHARGE DIRECT FIRED HEATER-ROOF TOP PACKAGE WITH LPD EVAPORATIVE COOLER AND SCREEN INTAKE



MODEL #	X	Y	Z *
BUJ2	14-1/2	22	19
BUJ1	18-1/2	27-1/4	21
BUJ3	21-1/2	30-1/4	21
BUJ5	23	33-3/4	24-3/4
BUJ7	23-1/2	39-3/8	28
BUJ8	29-1/2	38-7/8	28
BUJ24	30-5/8	43-3/8	33
BUJ30	33-1/2	52-3/4	40



\* 9 INCH HIGH EXHAUST ADAPTER MAY BE REQUIRED

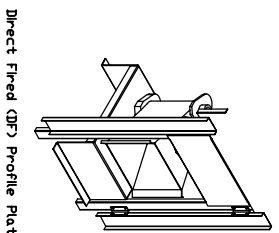
CURB/RAIL COMBINATION USED IN UNITS WITH 20" AND 25" BLOWERS

MODEL	CURB			DISCHARGE OPENING			WATER INLET			DRAIN OPENING													
	A	B	C	D	E	F	G	H	I	J	K	L											
D250-610	106-5/8	27-3/8	36-3/4	29-3/4	36-3/4	26-1/6	33	3-3/4	3-3/4	30-5/16	7-13/16	34-13/16	21	71	106	13-1/4	11-1/2	3-7/8	36-3/4	4-1/2	6-1/4	18	16
D500-610	106-5/8	27-3/8	36-3/4	29-3/4	36-3/4	26-1/6	33	3-3/4	3-3/4	30-5/16	7-13/16	34-13/16	21	71	106	13-1/4	11-1/2	3-7/8	36-3/4	4-1/2	6-1/4	18	16
D250-615	120-5/8	37-3/8	40-3/4	36-3/4	43-3/8	33-1/6	38-1/8	3-3/4	3-3/4	34-3/16	7-13/16	42-13/16	31	79	124	18-3/4	16	6-1/8	50-1/2	4-1/2	5-3/4	20	19
D500-615	120-5/8	37-3/8	40-3/4	36-3/4	43-3/8	33-1/6	38-1/8	3-3/4	3-3/4	34-3/16	7-13/16	42-13/16	31	79	124	18-3/4	16	6-1/8	50-1/2	4-1/2	5-3/4	20	19
D750-615	120-5/8	37-3/8	40-3/4	36-3/4	43-3/8	33-1/6	38-1/8	3-3/4	3-3/4	34-3/16	7-13/16	42-13/16	31	79	124	18-3/4	16	6-1/8	50-1/2	4-1/2	5-3/4	20	19
D500-618	122-3/4	41-3/8	47-7/8	43-3/8	51-3/8	38-1/6	46-1/8	5-1/4	5-1/4	47-1/4	9-1/2	47-13/16	35	84	133	22	19	6-1/2	56	4-1/2	23-1/2	17-1/2	17-1/2
D1000-618	122-3/4	41-3/8	47-7/8	43-3/8	51-3/8	38-1/6	46-1/8	5-1/4	5-1/4	47-1/4	9-1/2	47-13/16	35	84	133	22	19	6-1/2	56	4-1/2	23-1/2	17-1/2	17-1/2
D1500-618	153-7/8	48-7/16	58-5/8	51-3/8	58-3/8	46-1/8	53-1/8	5-1/4	5-1/4	49-5/8	13-9/16	66-5/16	42	115-3/16	171-3/16	24-7/8	24-7/8	8-9/16	57-1/8	5-3/4	28-7/8	17-1/2	17-1/2
D1500-920	153-7/8	48-7/16	58-5/8	51-3/8	58-3/8	46-1/8	53-1/8	5-1/4	5-1/4	49-5/8	13-9/16	66-5/16	42	115-3/16	171-3/16	24-7/8	24-7/8	8-9/16	57-1/8	5-3/4	28-7/8	17-1/2	17-1/2

MODEL	BURNER			GAS PRESSURE			GAS CONNECTION			CELDEK EVAPORATIVE COOLING UNIT		
	LENGTH	BTU L/DV	BTU HIGH	MIN	MAX	"N" (NPT)	TDI. WEIGHT	HEAT EXCH. SIZE & QTY	NOZZLES	MAX. FLOW RATE		
D250-610	6"	18	275	7" WC	14" WC	3/4	760 LBS	25"x32"x12"	20	6.5 GPH		
D500-610	12"	18	550	7" WC	14" WC	3/4	765 LBS	25"x32"x12"	20	6.5 GPH		
D250-615	6"	18	275	7" WC	14" WC	1	1085 LBS	30"x36"x12"	28	8.4 GPH		
D500-615	12"	18	550	7" WC	14" WC	1	1060 LBS	30"x36"x12"	28	8.4 GPH		
D750-615	18"	18	825	7" WC	14" WC	1	1065 LBS	30"x36"x12"	28	8.4 GPH		
D500-618	12"	18	550	7" WC	14" WC	1	1280 LBS	38"x43"x12"	35	10.15 GPH		
D750-618	18"	18	825	7" WC	14" WC	1	1285 LBS	38"x43"x12"	35	10.15 GPH		
D1000-618	24"	36.6	1100	7" WC	14" WC	1-1/4	1290 LBS	38"x43"x12"	35	10.15 GPH		
D1500-920	24"	36.6	1100	7" WC	14" WC	1-1/4	1925 LBS	45"x54"x12"	42	12.6 GPH		
D1500-920	30"	45.8	1375	7" WC	14" WC	1-1/4	1940 LBS	45"x54"x12"	42	12.6 GPH		

MAX. ROOF OPENING 2" SMALLER THAN CURB OUTSIDE DIMENSION

\*\*MAX. EVAP WATER PRESSURE = 50 PSI @ 70 DEG. F



**Direct Fired Profile Plate Specifications:**

Direct fired burners shall have patented US Patent No. US6499222, self-adjusting profile plates designed to ensure proper air velocity and pressure drop across the burner. Profile plates shall allow burners to achieve clean combustion by limiting by-product levels to a maximum of 50ppm of carbon monoxide (CO), and 50ppm of nitrogen dioxide (NO2).

**Application:**

Spring-loaded burner profile plates are engineered to automatically react to the momentum of a fresh air stream, without the need for any motors or actuators to mechanically adjust them. With this feature, all DF units are designed for demand control ventilation (DCV) requirements.

**General Construction:**

Profile plates shall be formed from 600 galvanized steel.

Profile plates shall be mounted along the same plane as the discharge of the burner.

Profile plates shall incorporate properly torqued, permanently mounted spring hinges.

Spring hinges shall be made from plated steel.