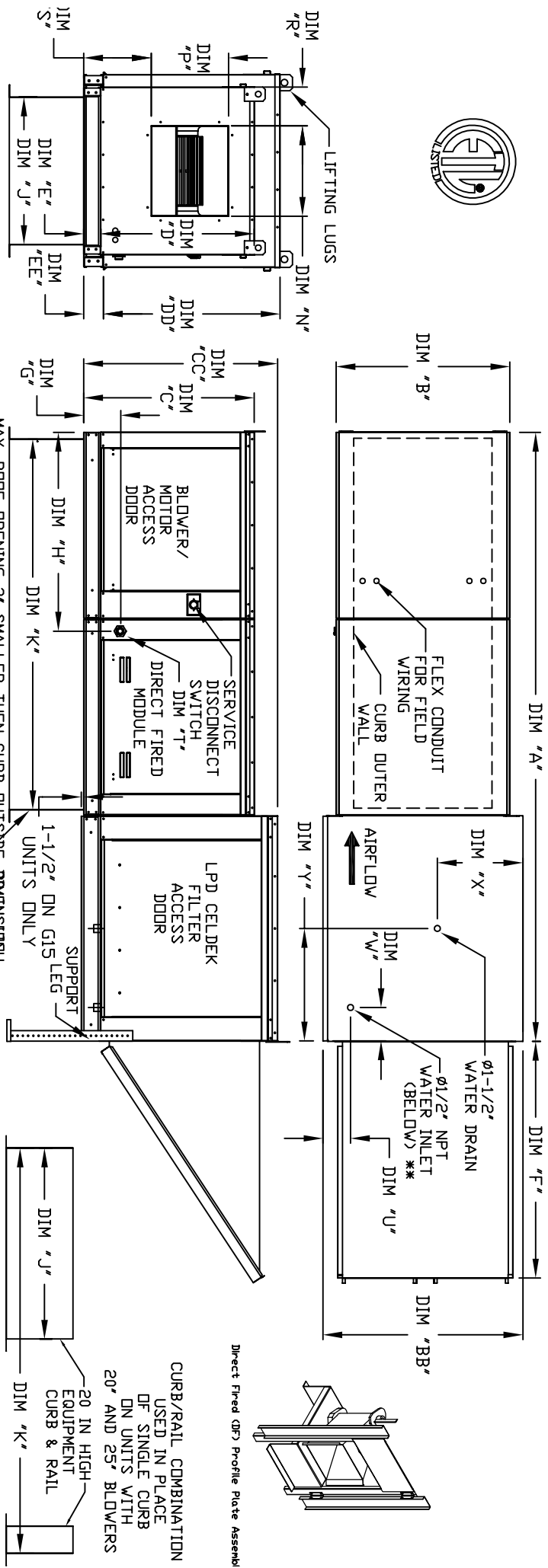


MODULAR OUTDOOR SIDE DISCHARGE DIRECT FIRED HEATER WITH LPD EVAPORATIVE COOLER AND INTAKE HOOD



ALL DIMENSIONS ARE NOMINAL AND GIVEN IN INCHES.  
MAX. ROOF OPENING 2' SMALLER THEN CURB OUTSIDE DIMENSIONS.

MODEL	A	B	BB	C	CC	D	DD	E	EE	F	G	H	J	K	P	R	S	U	V	X	Y	
D.250-G10	106-5/8	27-3/8	36-3/4	29-3/4	36-3/4	26-1/16	33	3-3/4	3-3/4	53-5/8	7-13/16	34-13/16	21	71	13-1/4	11-1/2	6-3/8	11-7/8	4-1/2	6-1/4	18	16
D.500-G10	106-5/8	27-3/8	36-3/4	29-3/4	36-3/4	26-1/16	33	3-3/4	3-3/4	53-5/8	7-13/16	34-13/16	21	71	13-1/4	11-1/2	6-3/8	11-7/8	4-1/2	6-1/4	18	16
D.250-G15	120-5/8	37-3/8	40-3/4	36-3/4	43-3/8	33-1/16	38-1/8	3-3/4	5-1/4	51-5/8	7-13/16	42-13/16	31	79	18-3/4	16	8-5/8	14-1/16	4-1/2	5-3/4	20	19
D.500-G15	120-5/8	37-3/8	40-3/4	36-3/4	43-3/8	33-1/16	38-1/8	3-3/4	5-1/4	51-5/8	7-13/16	42-13/16	31	79	18-3/4	16	8-5/8	14-1/16	4-1/2	5-3/4	20	19
D.750-G18	122-3/4	41-3/8	47-7/8	43-3/8	51-3/8	38-1/16	46-1/8	5-1/4	5-1/4	76-3/8	9-1/2	47-13/16	35	84	22	19	9	17-7/8	4-1/2	5-3/4	23-1/2	17-1/2
D.750-G18	122-3/4	41-3/8	47-7/8	43-3/8	51-3/8	38-1/16	46-1/8	5-1/4	5-1/4	76-3/8	9-1/2	47-13/16	35	84	22	19	9	17-7/8	4-1/2	5-3/4	23-1/2	17-1/2
D.1000-G18	122-3/4	41-3/8	47-7/8	43-3/8	51-3/8	38-1/16	46-1/8	5-1/4	5-1/4	76-3/8	9-1/2	47-13/16	35	84	22	19	9	17-7/8	4-1/2	5-3/4	23-1/2	17-1/2
D.1000-G18	122-3/4	41-3/8	47-7/8	43-3/8	51-3/8	38-1/16	46-1/8	5-1/4	5-1/4	76-3/8	9-1/2	47-13/16	35	84	22	19	9	17-7/8	4-1/2	5-3/4	23-1/2	17-1/2
D.1500-G20	153-7/8	48-7/16	58-5/8	51-3/8	58-3/8	46-1/8	53-1/8	5-1/4	5-1/4	71-3/8	13-9/16	66-5/16	42	115	3-1/6	24-7/8	24-7/8	11-1/16	4-1/2	5-3/4	28-7/8	17-1/2
D.1500-G20	153-7/8	48-7/16	58-5/8	51-3/8	58-3/8	46-1/8	53-1/8	5-1/4	5-1/4	71-3/8	13-9/16	66-5/16	42	115	3-1/6	24-7/8	24-7/8	11-1/16	4-1/2	5-3/4	28-7/8	17-1/2
D.2500-G25	163-7/8	59-3/16	74-7/8	58-3/8	68-3/8	53-1/8	63-1/8	5-1/4	5-1/4	71-3/8	13-3/4	76-7/16	52-3/4	125	3-3/16	31-3/8	31-3/8	13-3/16	4-1/2	5-3/4	37-1/2	17-1/2
D.2500-G25	163-7/8	59-3/16	74-7/8	58-3/8	68-3/8	53-1/8	63-1/8	5-1/4	5-1/4	71-3/8	13-3/4	76-7/16	52-3/4	125	3-3/16	31-3/8	31-3/8	13-3/16	4-1/2	5-3/4	37-1/2	17-1/2

UNIT INFORMATION

MODEL	BURNER BTU	LENGTH	BTU LOW	BTU HIGH	GAS PRESSURE	GAS CONNECTION	CELDEK EVAPORATIVE COOLING UNIT	INTAKE HOOD	DISCHARGE OPENING	WATER INLET	DRAIN OPENING
					MIN	MAX	TOT. WEIGHT	FILTER SIZE & QTY			
D.250-G10	6"	18	275	550	7" WC	14" WC	790 LBS	25"x32"x12" (2)	13-1/4	11-1/2	6-3/8
D.500-G10	12"	18	550	1100	7" WC	14" WC	795 LBS	25"x32"x12" (3)	13-1/4	11-1/2	6-3/8
D.250-G15	6"	18	275	550	7" WC	14" WC	1095 LBS	30"x36"x12" (6)	18-3/4	16	8-5/8
D.500-G15	12"	18	550	1100	7" WC	14" WC	1100 LBS	30"x36"x12" (6)	18-3/4	16	8-5/8
D.750-G18	12"	18	825	1650	7" WC	14" WC	1390 LBS	30"x36"x12" (6)	18-3/4	16	8-5/8
D.750-G18	12"	18	825	1650	7" WC	14" WC	1395 LBS	38"x43"x12" (10)	17-7/8	4-1/2	5-3/4
D.1000-G18	12"	18	825	1650	7" WC	14" WC	1395 LBS	38"x43"x12" (10)	17-7/8	4-1/2	5-3/4
D.1500-G20	24"	36.6	1100	2200	7" WC	5 PSI	2015 LBS	45"x54"x12" (8)	21-1/4	17-1/8	9
D.2500-G25	48"	73.3	2200	4400	7" WC	5 PSI	2660 LBS	45"x72"x12" (8)	21-1/4	17-1/8	9
D.2500-G25	60"	91.6	2750	5500	7" WC	5 PSI	2675 LBS	45"x72"x12" (8)	21-1/4	17-1/8	9

CELDEK EVAPORATIVE COOLING UNIT  
 Description: Direct fired burners shall have patented US Patent No. US6629523B2, self-adjusting profile plates designed to ensure proper air velocity and pressure drop across the burner. Profile plates shall allow burners to achieve clean combustion by limiting by-product levels to a maximum of 50ppm of carbon monoxide (CO), and 0.5ppm of nitrogen dioxide (NO2).  
 Application: Spring-loaded burner profile plates are engineered to automatically react to the momentum of a fresh air stream, without the need for any motors or actuators to mechanically adjust them. With this feature, all DF units are designed for demand control ventilation (DCV) requirements.  
 Certifications: All profile plate assemblies shall be included in the DF unit's ETL listing and comply with combined safety standards ANSI Z89.4 and CSA 3.7 from recirculating DF heaters) and ANSI Z89.318 (recirculating DF heaters).  
 General Construction: Profile plates shall be formed from G90 galvanized steel.  
 Profile plates shall vary in size per unit.  
 Profile plates shall be mounted along the same plane as the discharge of the burner.  
 Design shall incorporate proper torque, permanently mounted spring hinges.  
 Spring hinges shall be made from plated steel.