

HW-BL-PC-DBP-SAH
REV. 05/05/2015

ALL DIMENSIONS ARE NOMINAL AND GIVEN IN INCHES.

MODEL	A	B	BB	C	CC	D	DD	E	EE	F	G	H	J	K	L	N	P	R	S	T	U	V	X	
D-250-G10	181-1/8	27-3/8	36-3/4	29-3/4	36-3/4	26-1/16	33	3-3/4	3-3/4	53-5/8	7-13/16	34-13/16	21	71	102-7/16	13-1/4	11-1/2	6-3/8	11-7/8	14	8	14	12-1/2	18
D-500-G10	181-1/8	27-3/8	36-3/4	29-3/4	36-3/4	26-1/16	33	3-3/4	3-3/4	53-5/8	7-13/16	34-13/16	21	71	102-7/16	13-1/4	11-1/2	6-3/8	11-7/8	14	8	14	12-1/2	18
D-250-G15	195-1/8	37-3/8	40-3/4	36-3/4	43-3/8	33-1/16	38-1/8	3-3/4	5-1/4	51-5/8	7-13/16	42-13/16	31	79	115-7/16	18-3/4	16	8-5/8	14-1/16	22-3/4	8	11	7-1/2	24
D-500-G15	195-1/8	37-3/8	40-3/4	36-3/4	43-3/8	33-1/16	38-1/8	3-3/4	5-1/4	51-5/8	7-13/16	42-13/16	31	79	115-7/16	18-3/4	16	8-5/8	14-1/16	22-3/4	8	11	7-1/2	24
D-750-G15	195-1/8	37-3/8	40-3/4	36-3/4	43-3/8	33-1/16	38-1/8	3-3/4	5-1/4	51-5/8	7-13/16	42-13/16	31	79	115-7/16	18-3/4	16	8-5/8	14-1/16	22-3/4	8	11	7-1/2	24
D-500-G18	203-1/8	41-3/8	47-7/8	43-3/8	51-3/8	38-1/16	46-1/8	5-1/4	5-1/4	76-3/8	9-1/2	47-13/16	35	84	123-7/16	22	19	9	17-7/8	28	8	7	4-1/2	30
D-750-G18	203-1/8	41-3/8	47-7/8	43-3/8	51-3/8	38-1/16	46-1/8	5-1/4	5-1/4	76-3/8	9-1/2	47-13/16	35	84	123-7/16	22	19	9	17-7/8	28	8	7	4-1/2	30
D-1000-G18	203-1/8	41-3/8	47-7/8	43-3/8	51-3/8	38-1/16	46-1/8	5-1/4	5-1/4	76-3/8	9-1/2	47-13/16	35	84	123-7/16	22	19	9	17-7/8	28	8	7	4-1/2	30
D-1000-G20	243-9/16	48-7/16	58-5/8	51-3/8	58-3/8	46-1/8	53-1/8	5-1/4	5-1/4	71-3/8	13-9/16	66-5/16	42	115-3/16	163-3/16	24-7/8	24-7/8	11-1/16	19	33	10	11	8	36
D-1500-G20	243-9/16	48-7/16	58-5/8	51-3/8	58-3/8	46-1/8	53-1/8	5-1/4	5-1/4	71-3/8	13-9/16	66-5/16	42	115-3/16	163-3/16	24-7/8	24-7/8	11-1/16	19	33	10	11	8	36
D-2000-G25	283-9/16	59-3/16	74-7/8	58-3/8	58-3/8	53-1/8	53-1/8	5-1/4	5-1/4	71-3/8	13-3/4	76-7/16	52-3/4	125-3/16	179-15/16	31-3/8	31-3/8	13-3/16	21-1/4	43	10	10	6-1/2	43
D-2500-G25	283-9/16	59-3/16	74-7/8	58-3/8	58-3/8	53-1/8	53-1/8	5-1/4	5-1/4	71-3/8	13-3/4	76-7/16	52-3/4	125-3/16	179-15/16	31-3/8	31-3/8	13-3/16	21-1/4	43	10	10	6-1/2	43

MODEL	BURNER BTU RANGE (MBH)	GAS PRESSURE		GAS CONNECTION		CELDEK EVAPORATIVE COOLING UNIT		V-BANK FILTER		WATER INLET		DRAIN OPENING		OPTIONAL MIXING BOX FILTERS	
		MIN.	MAX.	"I" (NPT)	"I" (NPT)	TOT. WEIGHT	MEDIA SIZE & QTY	NOZZLES	MAX. FLOW RATE	AA	AB	AC	AD	FILTER SIZE & QTY	
D-250-G10	6"	18	275	7" WC	14" WC	1080	25"x32"x12"	20	6.5 GPH	4-1/2	38-1/2	18	48-1/4	20"x25"x2" (5)	
D-500-G10	12"	18	550	7" WC	14" WC	1085	25"x32"x12"	20	6.5 GPH	4-1/2	38-1/2	18	48-1/4	10"x16"x2" (5)	
D-250-G15	6"	18	275	7" WC	14" WC	1475	30"x36"x12"	28	8.4 GPH	4-1/2	44	20	57-1/4	20"x25"x2" (8)	
D-500-G15	12"	18	550	7" WC	14" WC	1480	30"x36"x12"	28	8.4 GPH	4-1/2	44	20	57-1/4	20"x25"x2" (8)	
D-750-G15	18"	27.5	825	7" WC	14" WC	1485	30"x36"x12"	28	8.4 GPH	4-1/2	44	20	57-1/4	20"x25"x2" (8)	
D-500-G18	12"	18	550	7" WC	14" WC	1905	38"x43"x12"	35	10.5 GPH	4-1/2	41-1/8	23-1/2	52-7/8	16"x20"x2" (15)	
D-750-G18	18"	27.5	825	7" WC	14" WC	1910	38"x43"x12"	35	10.5 GPH	4-1/2	41-1/8	23-1/2	52-7/8	16"x20"x2" (15)	
D-1000-G18	24"	36.6	1100	7" WC	14" WC	1915	38"x43"x12"	35	10.5 GPH	4-1/2	41-1/8	23-1/2	52-7/8	16"x20"x2" (15)	
D-1000-G20	24"	36.6	1100	7" WC	14" WC	2185	45"x54"x12"	42	12.6 GPH	4-1/2	41-1/8	28-7/8	52-7/8	20"x25"x2" (12)	
D-1500-G20	30"	45.8	1375	7" WC	5 PSI	2800	45"x54"x12"	42	12.6 GPH	4-1/2	41-1/8	28-7/8	52-7/8	20"x25"x2" (12)	
D-2000-G25	48"	73.3	2200	7" WC	5 PSI	3530	45"x72"x12"	57	20.1 GPH	4-1/2	41-1/8	37-1/2	52-7/8	20"x25"x2" (12)	
D-2500-G25	60"	91.6	2750	7" WC	5 PSI	3545	45"x72"x12"	57	20.1 GPH	4-1/2	41-1/8	37-1/2	52-7/8	20"x25"x2" (12)	

***MAX. EVAP. WATER PRESSURE = 50 PSI @ 70 DEG. F

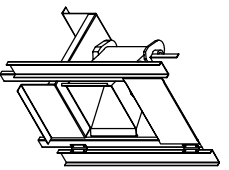
Direct Fired Profile Plate Specifications:

Direct fired burners shall have patented US Patent No. US5662952B2, self-adjusting profile plates designed to ensure proper air velocity and pressure drop across the burner. Profile plates shall allow burners to achieve clean combustion by limiting by-product levels to a maximum of 50ppm of carbon monoxide (CO), and 0.5ppm of nitrogen dioxide (NO2).

Application: Spring-loaded burner profile plates are engineered to automatically react to the momentum of air when air stream, without the need for any motors or actuators, is periodically adjusted. When the velocity of air units is reduced, the burner profile plates will automatically adjust themselves to the new velocity, all air units are designed for optimal combustion efficiency.

Installation: Burner assemblies shall be included in the DF units. ETL listing and comply with safety standards ANSI Z89.4 and CSA 37 (non-retracting DF heaters) and ANSI Z89.18 (retracting DF heaters).

General Construction: Burner profile plates are formed from G90 galvanized steel. Profile plates shall vary in size per unit. Profile plates shall be mounted along the same plane as the discharge of the burner. Design shall incorporate proper torque, permanently mounted spring hinges.



Direct Fired (DF) Profile Plate Assembly