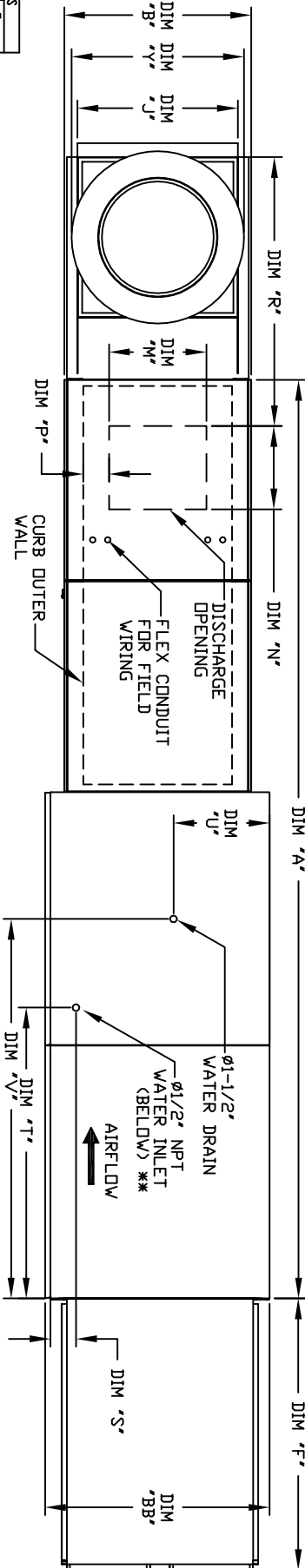


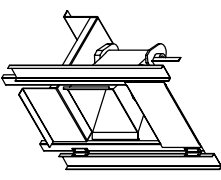
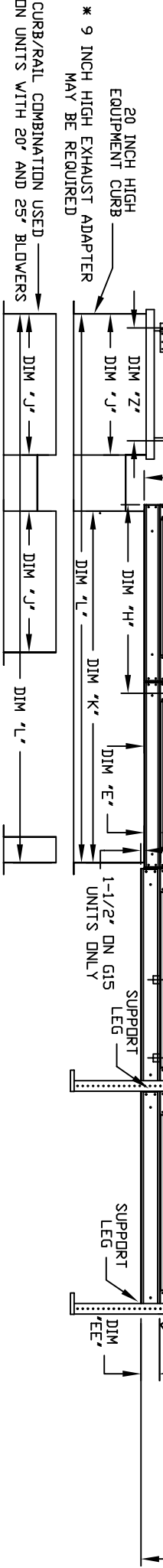
MODULAR OUTDOOR DOWN DISCHARGE DIRECT FIRED HEATER--ROOF TOP PACKAGE WITH V-BANK, LPD EVAPORATIVE COOLER AND INTAKE HOOD

HPVA-PFC-DIAPRT
REV#43 05/05/2015



EXHAUST UNIT DIMENSIONS

MODEL #	X	Y	Z *
ND250-610	14-1/2	22	19
ND250-615	18-1/2	27-1/4	21
ND250-618	21-1/2	30-1/4	21
ND250-620	23-1/2	33-3/4	24-3/4
ND250-625	29-1/2	38-7/8	28
ND250-630	30-5/8	43-3/8	33
ND250-640	33-1/2	52-3/4	40



ALL DIMENSIONS ARE NOMINAL AND GIVEN IN INCHES.

MODEL	A	B	BB	C	CC	D	DD	E	EE	F	G	H	J	K	L	M	N	P	R	S	T	U	V
1D250-610	138-7/8	27-3/8	36-3/4	29-3/4	36-3/4	26-1/16	33	3-3/4	3-3/4	53-5/8	7-13/16	34-13/16	21	71	106	13-1/4	11-1/2	3-7/8	36-3/4	4-1/2	38-1/2	18	48-1/4
1D250-610	138-7/8	27-3/8	36-3/4	29-3/4	36-3/4	26-1/16	33	3-3/4	3-3/4	53-5/8	7-13/16	34-13/16	21	71	106	13-1/4	11-1/2	3-7/8	36-3/4	4-1/2	38-1/2	18	48-1/4
1D250-615	158-7/8	37-3/8	40-3/4	36-3/4	43-3/8	33-1/16	38-1/8	3-3/4	5-1/4	51-5/8	7-13/16	42-13/16	31	79	124	18-3/4	16	6-1/8	50-1/2	4-1/2	44	20	57-1/4
1D250-615	158-7/8	37-3/8	40-3/4	36-3/4	43-3/8	33-1/16	38-1/8	3-3/4	5-1/4	51-5/8	7-13/16	42-13/16	31	79	124	18-3/4	16	6-1/8	50-1/2	4-1/2	44	20	57-1/4
1D250-618	158-7/8	41-3/8	47-1/8	43-3/8	51-3/8	38-1/16	46-1/8	5-1/4	5-1/4	76-3/8	9-1/2	47-13/16	35	84	133	22	19	6-1/2	56	4-1/2	44	20	57-1/4
1D250-618	158-7/8	41-3/8	47-1/8	43-3/8	51-3/8	38-1/16	46-1/8	5-1/4	5-1/4	76-3/8	9-1/2	47-13/16	35	84	133	22	19	6-1/2	56	4-1/2	44	20	57-1/4
1D1000-920	189-1/4	48-7/16	58-5/8	51-3/8	58-3/8	46-1/8	53-1/8	5-1/4	5-1/4	71-3/8	13-9/16	66-5/16	42	115-3/16	171-3/16	24-7/8	24-7/8	8-9/16	57-1/8	4-1/2	41-1/8	28-7/8	52-7/8
1D1000-920	189-1/4	48-7/16	58-5/8	51-3/8	58-3/8	46-1/8	53-1/8	5-1/4	5-1/4	71-3/8	13-9/16	66-5/16	42	115-3/16	171-3/16	24-7/8	24-7/8	8-9/16	57-1/8	4-1/2	41-1/8	28-7/8	52-7/8

MAX. ROOF OPENING 2' SMALLER THAN CURB OUTSIDE DIMENSION
 **MAX. EVAP WATER PRESSURE = 50 PSI @ 70 DEG. F

Direct fired Profile Plate Specifications:
 Direct fired burners shall have patented US Patent No. US6692328B2, self-adjusting profile plates designed to ensure proper air velocity and pressure drop across the burner. Profile plates shall allow burners to achieve clean combustion by "product" levels to a maximum of 30ppm of carbon monoxide (CO), and 10ppm of nitrogen dioxide (NO2).
 Applications:
 Spring-loaded burner profile plates are engineered to automatically react to the momentum of fresh air stream, if the need for dry motors or actuators to mechanically adjust them with this feature, all DF units are designed for demand control ventilation (DCV) requirements.
 Fabrications:
 These assemblies shall be included in the DF unit's ETL listing and comply with combined safety standards ANSI Z83.4 and CSA 37 (non-recirculating DF heaters) and ANSI Z83.18 (recirculating DF heaters).
 General Construction:
 Profile plates shall be formed from 590 galvanized steel.
 Profile plates shall vary in size per unit.
 Profile plates shall be mounted along the same plane as the discharge of the burner.
 Design shall incorporate properly torqued, permanently mounted spring hinges.