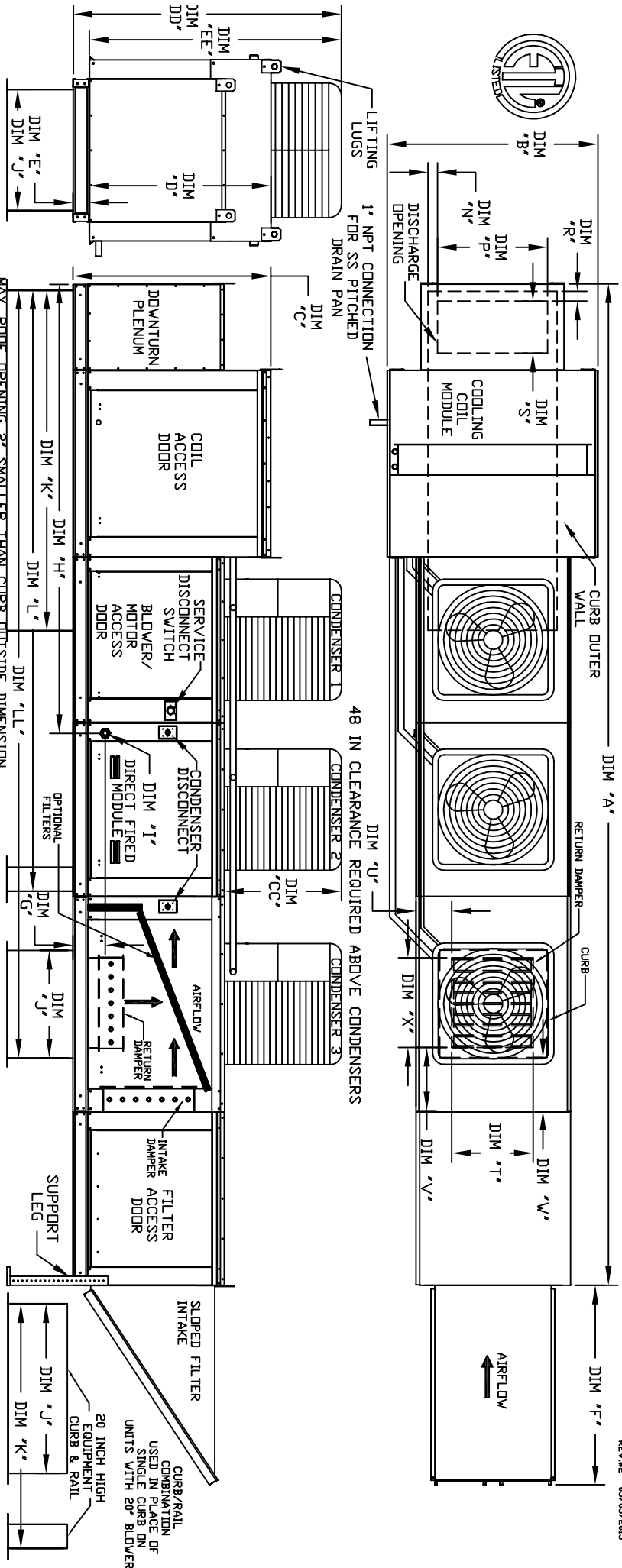


MODULAR OUTDOOR DOWN DISCHARGE DIRECT FIRED RECIRCULATING HEATER WITH COOLING, V-BANK AND INTAKE HOOD

JH19BDBF-SMHCDB-49U-15
REV. #2 05/05/2015



ALL DIMENSIONS ARE NOMINAL AND GIVEN IN INCHES.

MODEL	WEIGHT	UNIT DIMENSIONS												CURB/RAIL	DISCHARGE OPENING			RETURN OPENING				
		A	B	C	D	E	F	G	H	J	K	L	LL		N	P	R	S	T	U	V	W
D.500-G18	2060 LBS	234-1/2	54-3/8	56-3/8	51-1/8	5-1/4	51-5/8	9-1/2	114-7/16	35	84	150-5/8	190-1/16	6-5/16	22-3/8	1-1/2	18	28	8	7	4-1/2	30
D.750-G18	2065 LBS	234-1/2	54-3/8	56-3/8	51-1/8	5-1/4	51-5/8	9-1/2	114-7/16	35	84	150-5/8	190-1/16	6-5/16	22-3/8	1-1/2	18	28	8	7	4-1/2	30
D.1000-G18	2070 LBS	234-1/2	54-3/8	56-3/8	51-1/8	5-1/4	51-5/8	9-1/2	114-7/16	35	84	150-5/8	190-1/16	6-5/16	22-3/8	1-1/2	18	28	8	7	4-1/2	30
D.1000-920	3315 LBS	292-7/8	60-7/16	64-3/8	59-1/8	5-1/4	76-3/8	13-9/16	151	42	115-3/16	199-7/8	247-7/8	5-1/4	31-1/2	1-13/16	23-1/2	33	10	11	8	36
D.1500-920	3330 LBS	292-7/8	60-7/16	64-3/8	59-1/8	5-1/4	76-3/8	13-9/16	151	42	115-3/16	199-7/8	247-7/8	5-1/4	31-1/2	1-13/16	23-1/2	33	10	11	8	36

MODEL	BTU RANGE (MMB)	GAS PRESSURE	GAS CONNECTION	TONNAGE RANGE		FILTERS		OPTIONAL MIXING BOX FILTERS	
				MIN	MAX	MIN	MAX	MIN	MAX
D.500-G18	18	7" WC	14" WC	15 Ton	15 Ton	20"x25"x2" (8)	20"x25"x2" (8)	15"x20"x2" (4)	15"x15"x2" (2)
D.750-G18	18	7" WC	14" WC	15 Ton	15 Ton	20"x25"x2" (8)	20"x25"x2" (8)	15"x20"x2" (4)	15"x15"x2" (2)
D.1000-G18	24	7" WC	14" WC	15 Ton	15 Ton	20"x25"x2" (8)	20"x25"x2" (8)	15"x20"x2" (4)	15"x15"x2" (2)
D.1000-920	30	7" WC	5 PSI	15 Ton	15 Ton	16"x20"x2" (15)	16"x20"x2" (15)	18"x25"x2" (4)	16"x20"x2" (2)
D.1500-920	30	7" WC	5 PSI	15 Ton	15 Ton	16"x20"x2" (15)	16"x20"x2" (15)	18"x25"x2" (4)	16"x20"x2" (2)

MODEL	WEIGHT*	TONNAGE			CC	DD	EE
		#1	#2	#3			
15 TON-G18	588 LBS	5 TON	5 TON	5 TON	29-15/16	73-5/16	68-1/16
15 TON-920	588 LBS	5 TON	5 TON	5 TON	29-15/16	94-5/16	89-1/16

MADE CONDENSING UNIT WEIGHT TO WEIGHT IN TABLE ABOVE

CONDENSER INFORMATION

Direct Fired Profile Plate Specifications:

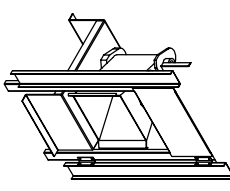
Description: Direct fired burner's shall have patented (US Patent No. US6629523B2), self-adjusting profile plates designed to ensure proper air velocity and pressure drop across the burner. Profile plates shall allow burners to achieve clean combustion by limiting by-product levels to a maximum of 5ppm of carbon monoxide (CO), and 50ppm of nitrogen dioxide (NO2).

Application: Spring-loaded burner profile plates are engineered to automatically react to the momentum of the burner's flame. The spring force counteracts the flame's momentum, ensuring the burner's flame remains in contact with the profile plates. With this feature, all DF units are designed for demand control ventilation (DCV) requirements.

Specifications: Profile plate assemblies shall be included in the DF unit's FTL listing and comply with combined safety standards ANSI Z83.1 and CSA 3.7 (non-recirculating DF heaters) and ANSI Z83.18 (recirculating DF heaters).

General Construction:

- Profile plates shall be formed from G90 galvanized steel.
- Profile plates shall be mounted along the same plane as the discharge of the burner.
- Profile plates shall be mounted along the same plane as the discharge of the burner.
- Design shall incorporate properly torqued, permanently mounted spring hinges.
- Spring hinges shall be made from plated steel.



Direct Fired (DF) Profile Plate Assembly