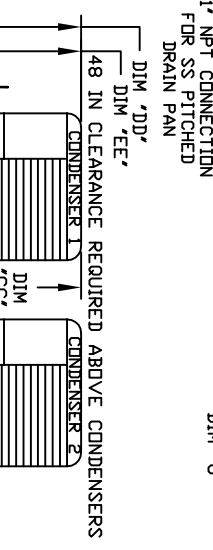
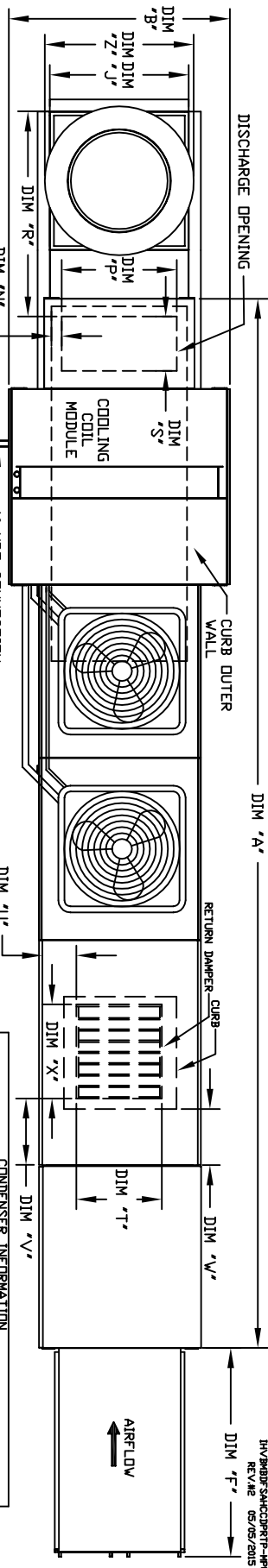


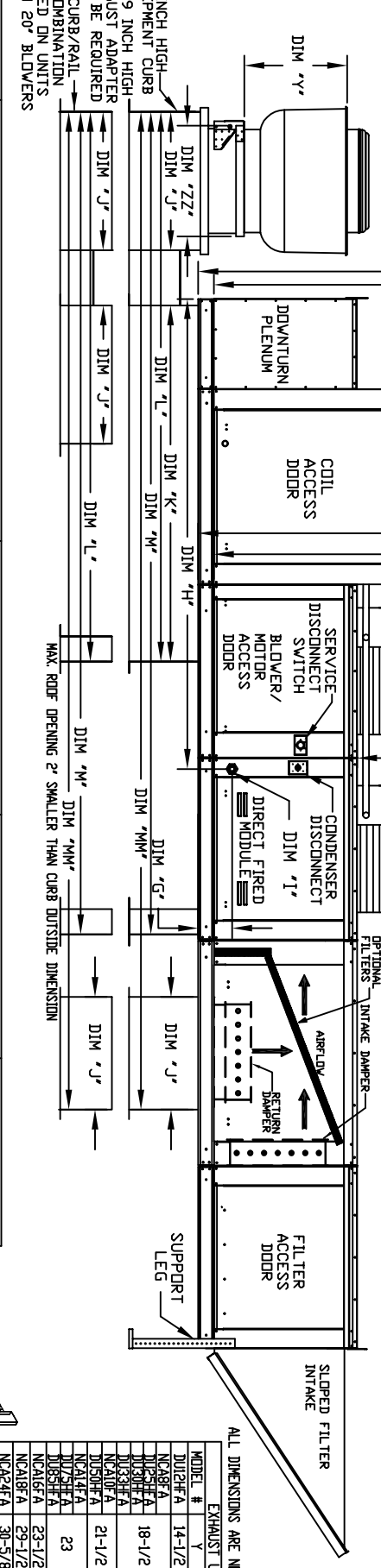
MODULAR OUTDOOR DOWN DISCHARGE DIRECT FIRED RECIRCULATING HEATER-ROOF TOP PACKAGE WITH COOLING, V-BANK AND INTAKE HOOD

JHV2B00534ACC0PRT1-HRU
REV/ME 05/05/2015



MODEL	WEIGHT #1	TONNAGE #2	CC	DD	EE
2 TON-G10	110 LBS	2 TON	N/A	29-13/16	59-9/16
3 TON-G10	141 LBS	3 TON	N/A	33-5/16	63-1/16
5 TON-G10	225 LBS	5 TON	N/A	33-5/16	63-1/16
5 TON-G10	222 LBS	5 TON	2.5 TON	29-11/16	59-7/16
5 TON-G10	190 LBS	5 TON	N/A	29-15/16	56-11/16
7.5 TON-G15	301 LBS	7.5 TON	2.5 TON	33-5/16	70-1/16
8 TON-G15	331 LBS	8 TON	5 TON	33-5/16	70-1/16
10 TON-G15	380 LBS	10 TON	5 TON	29-15/16	65-11/16
10 TON-G15	380 LBS	10 TON	5 TON	29-15/16	73-5/16
10 TON-G15	380 LBS	10 TON	5 TON	29-15/16	68
10 TON-G15	380 LBS	10 TON	5 TON	29-15/16	82
10 TON-G15	380 LBS	10 TON	5 TON	29-15/16	89-1/16

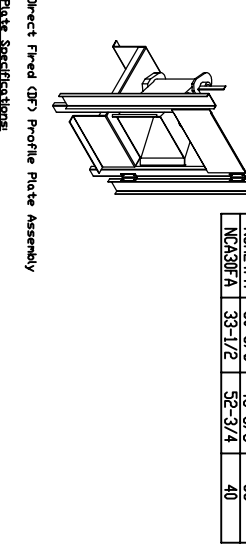
R410A REFRIGERANT



ALL DIMENSIONS ARE NOMINAL AND GIVEN IN INCHES

MODEL #	1	2	2Z **
DJ212HA	14-1/2	22	19
NCAB2A	18-1/2	27-1/4	21
DJ332HA	21-1/2	30-1/4	21
NCAL2A	23	33-3/4	24-3/4
DJ352HA	23-1/2	39-3/8	28
NCAL3A	29-1/2	38-7/8	28
NCAL2FA	30-5/8	43-3/8	33
NCAL3FA	33-1/2	52-3/4	40

MODEL	UNIT DIMENSIONS				CURB/RAIL				DISCHARGE OPENING				RETURN DAMPER OPENING										
	A	B	C	D	E	F	G	H	J	K	L	M	N	P	R	S	T	U	V	X			
D250-G10	280	209-1/2	39-3/8	42-3/4	39	3-3/4	44-3/8	7-13/16	95-7/16	21	71	106	166-5/8	198-1/16	3-9/16	13-7/8	36-3/16	11-1/2	14	8	14	12-1/2	18
D300-G10	325	259-1/2	39-3/8	42-3/4	39	3-3/4	44-3/8	7-13/16	95-7/16	21	71	106	166-5/8	198-1/16	3-9/16	13-7/8	36-3/16	11-1/2	14	8	14	12-1/2	18
D350-G15	375	283-1/2	49-3/8	47-3/4	44	3-3/4	53-3/8	7-13/16	109-7/16	31	79	124	190-5/8	227-1/16	4-5/16	22-3/8	46-9/16	18	22-3/4	8	11	7-1/2	24
D500-G15	470	323-1/2	49-3/8	47-3/4	44	3-3/4	53-3/8	7-13/16	109-7/16	31	79	124	190-5/8	227-1/16	4-5/16	22-3/8	46-9/16	18	22-3/4	8	11	7-1/2	24
D750-G18	615	363-1/2	54-3/8	51-1/8	44	3-3/4	53-3/8	7-13/16	109-7/16	31	79	124	190-5/8	227-1/16	4-5/16	22-3/8	46-9/16	18	22-3/4	8	11	7-1/2	24
D1000-G18	745	403-1/2	54-3/8	51-1/8	44	3-3/4	53-3/8	7-13/16	109-7/16	31	79	124	190-5/8	227-1/16	4-5/16	22-3/8	46-9/16	18	22-3/4	8	11	7-1/2	24
D1500-G18	865	443-1/2	54-3/8	51-1/8	44	3-3/4	53-3/8	7-13/16	109-7/16	31	79	124	190-5/8	227-1/16	4-5/16	22-3/8	46-9/16	18	22-3/4	8	11	7-1/2	24
D2000-G18	985	483-1/2	54-3/8	51-1/8	44	3-3/4	53-3/8	7-13/16	109-7/16	31	79	124	190-5/8	227-1/16	4-5/16	22-3/8	46-9/16	18	22-3/4	8	11	7-1/2	24
D2500-G20	1100	523-1/2	64-3/8	59-1/8	42	3-1/4	63-3/8	9-1/2	114-7/16	35	84	133	199-5/8	239-1/16	6-5/16	22-3/8	49-1/2	18	28	8	7	4-1/2	30
D3000-G20	1240	563-1/2	64-3/8	59-1/8	42	3-1/4	63-3/8	9-1/2	114-7/16	35	84	133	199-5/8	239-1/16	6-5/16	22-3/8	49-1/2	18	28	8	7	4-1/2	30
D3500-G20	1380	603-1/2	64-3/8	59-1/8	42	3-1/4	63-3/8	9-1/2	114-7/16	35	84	133	199-5/8	239-1/16	6-5/16	22-3/8	49-1/2	18	28	8	7	4-1/2	30
D4000-G20	1520	643-1/2	64-3/8	59-1/8	42	3-1/4	63-3/8	9-1/2	114-7/16	35	84	133	199-5/8	239-1/16	6-5/16	22-3/8	49-1/2	18	28	8	7	4-1/2	30
D4500-G20	1660	683-1/2	64-3/8	59-1/8	42	3-1/4	63-3/8	9-1/2	114-7/16	35	84	133	199-5/8	239-1/16	6-5/16	22-3/8	49-1/2	18	28	8	7	4-1/2	30
D5000-G20	1800	723-1/2	64-3/8	59-1/8	42	3-1/4	63-3/8	9-1/2	114-7/16	35	84	133	199-5/8	239-1/16	6-5/16	22-3/8	49-1/2	18	28	8	7	4-1/2	30



ADD CONDENSING UNIT WEIGHT TO WEIGHT IN TABLE ABOVE

MODEL	BTU RANGE (GWB)		GAS PRESSURE (GAS CONNECTION)		TONNAGE RANGE		FILTER SIZE & QTY		MAX. FILTER VELOCITY	
	MIN	MAX	MIN	MAX	MIN	MAX	MIN	MAX	MIN	MAX
D250-G10	18	27.5	14" WC	3/4"	2 ton	5 ton	20"x25"x2" (3)	8300 CFM = 348 FPM	20"x25"x2" (3)	8300 CFM = 348 FPM
D300-G10	18	27.5	14" WC	3/4"	2 ton	5 ton	20"x25"x2" (3)	8300 CFM = 348 FPM	20"x25"x2" (3)	8300 CFM = 348 FPM
D350-G15	18	27.5	14" WC	3/4"	3 ton	10 ton	16"x20"x2" (8)	6500 CFM = 428 FPM	16"x20"x2" (8)	6500 CFM = 428 FPM
D500-G15	18	27.5	14" WC	3/4"	3 ton	10 ton	16"x20"x2" (8)	6500 CFM = 428 FPM	16"x20"x2" (8)	6500 CFM = 428 FPM
D750-G18	18	27.5	14" WC	3/4"	5 ton	10 ton	20"x25"x2" (8)	8000 CFM = 348 FPM	20"x25"x2" (8)	8000 CFM = 348 FPM
D1000-G18	18	27.5	14" WC	3/4"	5 ton	10 ton	20"x25"x2" (8)	8000 CFM = 348 FPM	20"x25"x2" (8)	8000 CFM = 348 FPM
D1500-G18	18	27.5	14" WC	3/4"	5 ton	10 ton	20"x25"x2" (8)	8000 CFM = 348 FPM	20"x25"x2" (8)	8000 CFM = 348 FPM
D2000-G20	24	36.6	14" WC	5 PSI	10 ton	10 ton	16"x20"x2" (8)	6100 CFM = 488 FPM	16"x20"x2" (8)	6100 CFM = 488 FPM
D2500-G20	24	36.6	14" WC	5 PSI	10 ton	10 ton	16"x20"x2" (8)	6100 CFM = 488 FPM	16"x20"x2" (8)	6100 CFM = 488 FPM
D3000-G20	30	43.8	13 1/2" WC	1-1/4"	10 ton	10 ton	16"x20"x2" (8)	6100 CFM = 488 FPM	16"x20"x2" (8)	6100 CFM = 488 FPM

OPTIONAL MIXING BOX FILTERS

MODEL	1	2	2Z **
DJ212HA	10 X16 X2 (5)		
NCAB2A	10 X16 X2 (5)		
DJ332HA	20 X25 X2 (2)	16 X25 X2 (1)	
NCAL2A	20 X25 X2 (2)	16 X25 X2 (1)	
DJ352HA	20 X25 X2 (2)	16 X25 X2 (1)	
NCAL3A	15 X20 X2 (4)	15 X15 X2 (2)	
DJ552HA	15 X20 X2 (4)	15 X15 X2 (2)	
NCAL5A	15 X20 X2 (4)	15 X15 X2 (2)	
DJ752HA	18 X25 X2 (4)	16 X20 X2 (2)	
NCAL7A	18 X25 X2 (4)	16 X20 X2 (2)	

Direct Fired Profile Plate Specifications:
 Direct fired burners shall have patented US Patent No. US6599323B2, self-inducting profile plates designed to ensure proper air velocity and pressure drop across the burner. Profile plates shall allow barriers to achieve clean combustion by limiting by-product levels to a maximum of 50ppm of carbon monoxide (CO), and 0.5ppm of nitrogen dioxide (NO2).
 Application: Spring-loaded burner profile plates are engineered to automatically react to the momentum of gas flow and maintain a consistent flame. They are designed for demand control ventilation (DCV) applications. With this feature, all BTU units are designed for demand control ventilation (DCV) applications.
 Certifications: The assemblies shall be included in the JF unit's ETL listing and comply with combined ANSI standards ANSI Z83.4 and CSA 3.7 non-recirculating BTU heaters and ANSI Z83.18 (recirculating BTU heaters).
 General construction: Profile plates shall be formed from G90 galvanized steel.
 Profile plates shall vary in size per unit.
 Profile plates shall be mounted along the same plane as the discharge of the burner.
 Profile plates shall be permanently mounted spring hinges.
 Spring hinges shall be made from plated steel.