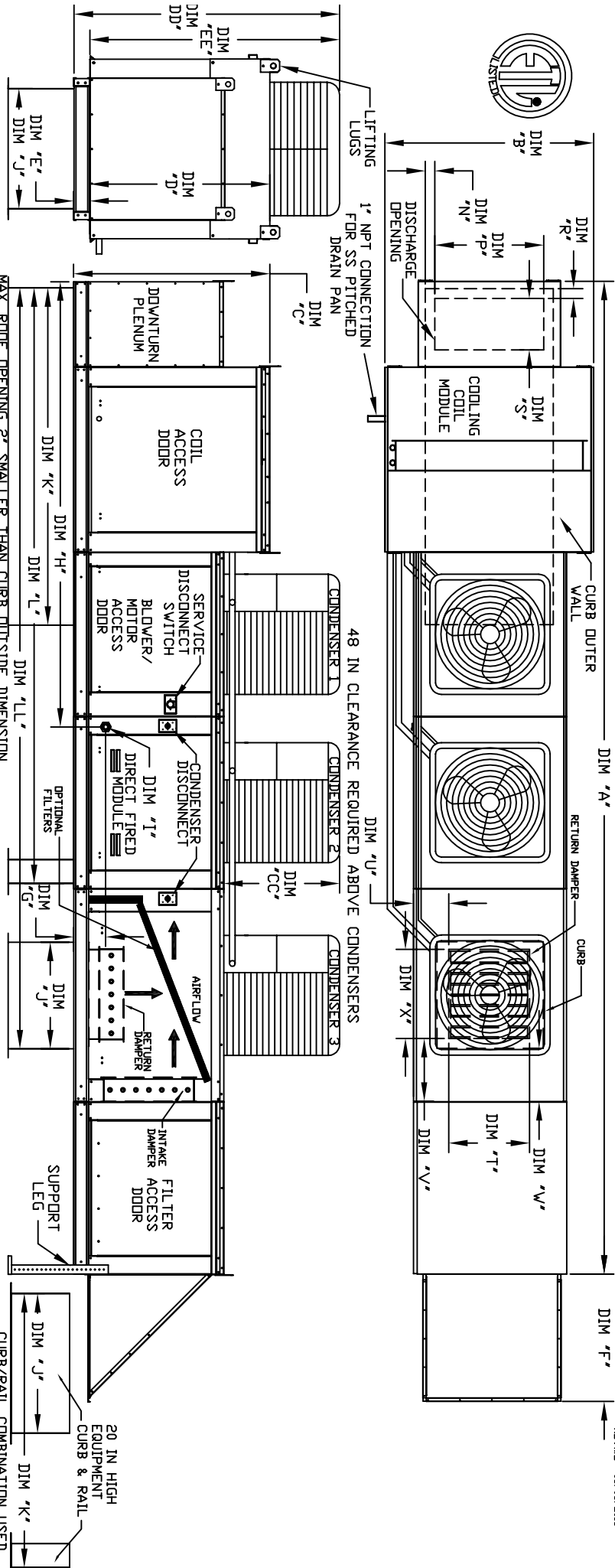


MODULAR OUTDOOR DOWN DISCHARGE DIRECT FIRED RECIRCULATING HEATER WITH COOLING, V-BANK AND SCREEN INTAKE

STV/BMBDF-SACODP-4PU-15  
REV.02 05/05/2015



ALL DIMENSIONS ARE NOMINAL AND GIVEN IN INCHES.

MODEL	UNIT DIMENSIONS										CURB/RAIL	DISCHARGE OPENING										RETURN OPENING
	A	B	C	D	E	F	G	H	J	K		L	LL	N	P	R	S	T	U	V	X	
D.500-G18	2020	54-3/8	56-3/8	51-1/8	5-1/4	34-3/16	9-1/2	114-7/16	35	84	150-5/8	190-1/16	6-5/16	22-3/8	1-1/2	28	8	7	4-1/2	30		
D.750-G18	2025	54-3/8	56-3/8	51-1/8	5-1/4	34-3/16	9-1/2	114-7/16	35	84	150-5/8	190-1/16	6-5/16	22-3/8	1-1/2	28	8	7	4-1/2	30		
D.1000-G18	2030	54-3/8	56-3/8	51-1/8	5-1/4	34-3/16	9-1/2	114-7/16	35	84	150-5/8	190-1/16	6-5/16	22-3/8	1-1/2	28	8	7	4-1/2	30		
D.1000-920	3205	54-3/8	56-3/8	51-1/8	5-1/4	34-3/16	9-1/2	114-7/16	42	115-3/16	199-7/8	247-7/8	6-5/16	22-3/8	1-1/2	33	10	8	4-1/2	36		
D.1500-920	3220	54-3/8	56-3/8	51-1/8	5-1/4	34-3/16	9-1/2	114-7/16	42	115-3/16	199-7/8	247-7/8	6-5/16	22-3/8	1-1/2	33	10	11	8	36		

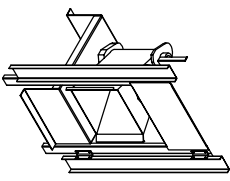
MODEL	BTU RANGE (MBH)			GAS PRESSURE (GAS CONNECTION)			TONNAGE RANGE			FILTERS			OPTIONAL MIXING BOX FILTERS		
	MIN	MAX	BTU HIGH	MIN	MAX	1\"/>									
D.500-G18	12"	18"	550	7\"/>											
D.750-G18	18"	27.5"	825	7\"/>											
D.1000-G18	24"	36.6"	1100	7\"/>											
D.1000-920	24"	36.6"	1100	7\"/>											
D.1500-920	30"	45.8"	1375	7\"/>											

\*ADD CONDENSING UNIT WEIGHT TO WEIGHT IN TABLE ABOVE

MODEL	CONDENSER INFORMATION			CC	DD	EE
	WEIGHT*	#1	#2			
15 TON-G18	588 LBS	5 TON	5 TON	29-15/16	73-5/16	68-1/16
15 TON-920	588 LBS	5 TON	5 TON	29-15/16	94-5/16	89-1/16

R410A REFRIGERANT

**Direct Fired Profile Plate Specifications:**  
 Description: Direct fired burners shall have patented US Patent No. US6695232B2, self-adjusting profile plates designed to ensure proper air velocity and pressure drop across the burner. Profile plates shall be made of mild steel with a maximum of 50ppm of carbon monoxide (CO) and 0.5ppm of nitrogen dioxide (NO2).  
 Application: Spring-loaded burner profile plates are engineered to automatically react to the momentum of a fresh air stream, without the need for any motors or actuators to mechanically adjust them. With this feature, all DF units are designed for demand ventilation (DcV) requirements.  
 Certifications: All profile plate assemblies shall be included in the DF unit's ETL listing and comply with combined safety standards ANSI Z83.4 and CSA 3.7 (non-recirculating DF heaters) and ANSI Z83.18 (recirculating DF heaters).  
 General Construction: Profile plates shall be formed from G90 galvanized steel.  
 Profile plates shall vary in size per unit.  
 Profile plates shall be mounted along the same plane as the discharge of the burner.  
 Design shall incorporate properly torqued permanently mounted spring hinges.  
 Spring hinges shall be made from plated steel.



Direct Fired (DF) Profile Plate Assembly