

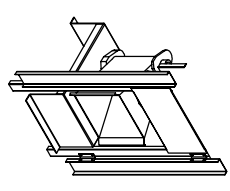
30 INCH HIGH EQUIPMENT CURB
9 INCH HIGH EXHAUST ADAPTER
MAY BE REQUIRED
CURB/RAIL COMBINATION
USED ON UNITS WITH 20" BLOWERS

ALL DIMENSIONS ARE NOMINAL AND GIVEN IN INCHES.

MODEL #	Y	Z	UNIT DIMENSIONS													CURB/RAIL		DISCHARGE OPENING												RETURN DAMPER OPENING											
			A	B	C	D	E	F	G	H	J	K	L	M	N	P	R	S	T	U	V	X																			
D250-G10	1260	LBS	209-1/2	39-3/8	42-3/4	39	3-3/4	22-3/8	7-13/16	95-7/16	21	71	106	166-5/8	198-1/16	3-9/16	13-7/8	36-13/16	11-1/2	14	8	14	12-1/2	18																	
D300-G10	1265	LBS	209-1/2	39-3/8	42-3/4	39	3-3/4	22-3/8	7-13/16	95-7/16	21	71	106	166-5/8	198-1/16	3-9/16	13-7/8	36-13/16	11-1/2	14	8	14	12-1/2	18																	
D250-G15	1705	LBS	223-1/2	49-3/8	47-3/4	44	3-3/4	30-5/16	7-13/16	109-7/16	31	79	124	190-5/8	227-1/16	4-5/16	22-3/8	46-9/16	18	22-3/4	8	11	7-1/2	24																	
D250-G15	1710	LBS	223-1/2	49-3/8	47-3/4	44	3-3/4	30-5/16	7-13/16	109-7/16	31	79	124	190-5/8	227-1/16	4-5/16	22-3/8	46-9/16	18	22-3/4	8	11	7-1/2	24																	
D300-G15	2230	LBS	243-1/2	54-3/8	51-1/8	44	3-3/4	30-5/16	7-13/16	109-7/16	31	79	124	190-5/8	227-1/16	4-5/16	22-3/8	46-9/16	18	22-3/4	8	11	7-1/2	24																	
D300-G18	2620	LBS	234-1/2	54-3/8	51-1/8	44	3-3/4	30-5/16	7-13/16	109-7/16	35	84	133	199-5/8	239-1/16	6-5/16	22-3/8	49-1/2	18	28	8	7	4-1/2	30																	
D300-G18	2630	LBS	234-1/2	54-3/8	51-1/8	44	3-3/4	30-5/16	7-13/16	109-7/16	35	84	133	199-5/8	239-1/16	6-5/16	22-3/8	49-1/2	18	28	8	7	4-1/2	30																	
D1000-G18	3200	LBS	234-1/2	54-3/8	51-1/8	44	3-3/4	30-5/16	7-13/16	109-7/16	35	84	133	199-5/8	239-1/16	6-5/16	22-3/8	49-1/2	18	28	8	7	4-1/2	30																	
D1000-G20	3205	LBS	292-7/8	60-7/16	64-3/8	59-1/8	5-1/4	47-1/4	13-9/16	151	42	115-3/16	171-3/16	255-7/8	303-7/8	5-1/4	31-1/2	56-13/16	23-1/2	33	10	11	8	36																	
D1500-G20	3220	LBS	292-7/8	60-7/16	64-3/8	59-1/8	5-1/4	47-1/4	13-9/16	151	42	115-3/16	171-3/16	255-7/8	303-7/8	5-1/4	31-1/2	56-13/16	23-1/2	33	10	11	8	36																	

MAX. ROOF OPENING 2' SMALLER THAN CURB OUTSIDE DIMENSION

Direct Fired Profile Plate Specifications:
 Description: Direct fired burners shall have patented QIS Patent No. US669932B2, self-adjusting profile plates designed to ensure proper air velocity and pressure drop across the burner. Profile plates shall allow burners to achieve clean combustion by hitting by-product levels to a maximum of 5ppm of carbon monoxide (CO), and 50ppm of nitrogen dioxide (NO2).
 Applications: Spring-loaded burner profile plates are engineered to automatically react to the momentum of a fresh air stream, without the need for any motors or actuators to mechanically adjust them. With this feature, all DF units are designed for demand control ventilation (DCV) requirements.
 Details/Notes: Burner profile plate assemblies shall be included in the DF units' ETL listing and comply with all applicable codes, including ANSI Z95.4 and CSA S17. Inter-communicating DF heaters, and ANSI Z95.4 and CSA S17 inter-communicating DF heaters.
 General Construction: Burner profile plates shall be formed from 600 galvanized steel.
 Profile plates shall vary in size per unit.
 Profile plates shall be mounted along the same plane as the discharge of the burner.
 Design shall incorporate proper torque, permanently mounted spring hinges.



Direct Fired QP Profile Plate Assembly