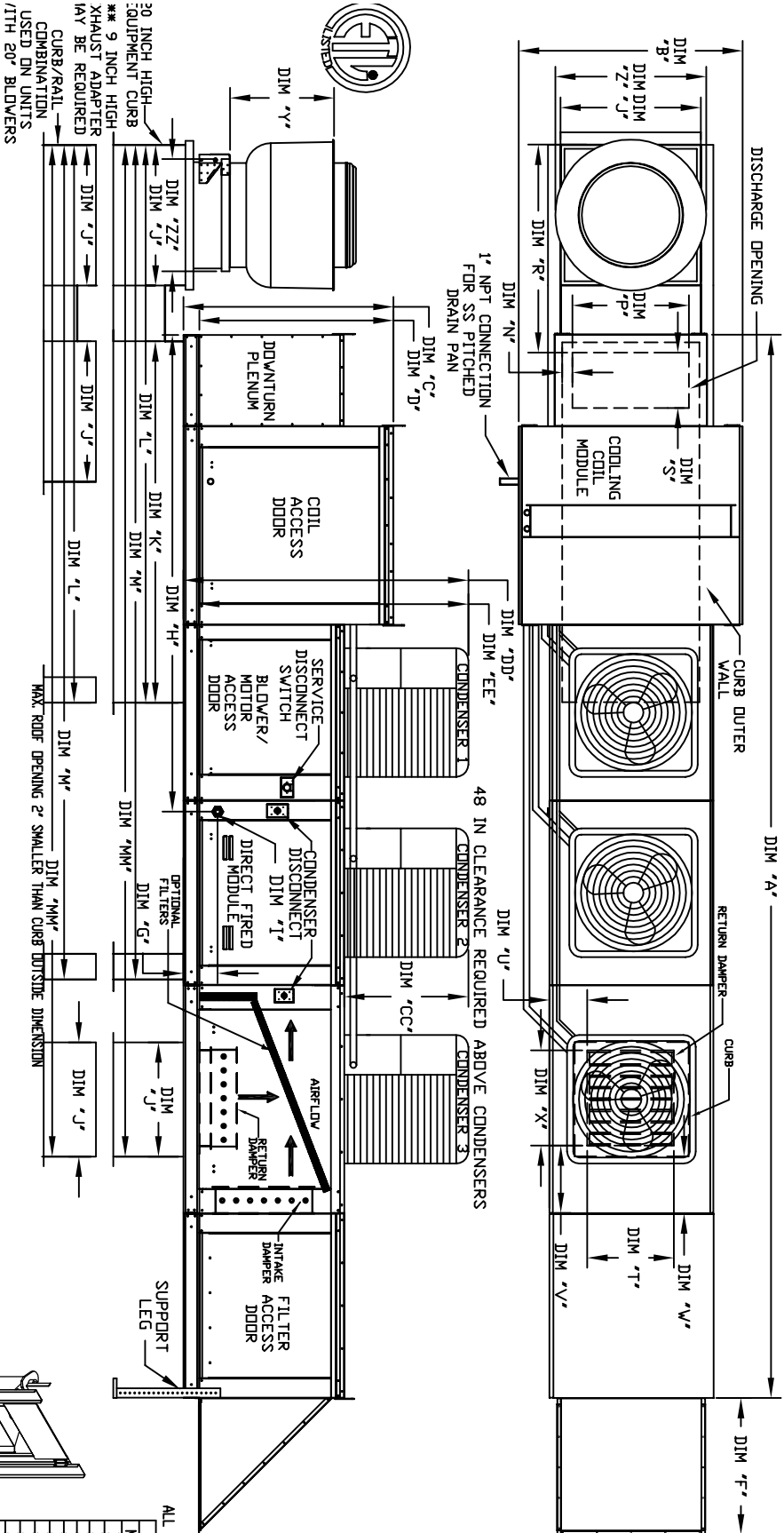


MODULAR OUTDOOR DOWN DISCHARGE DIRECT FIRED RECIRCULATING HEATER-ROOF TOP PACKAGE WITH COOLING, V-BANK AND SCREEN INTAKE

SIVBDF5AHC0PRT-4L-4W-15
REV#E 05/05/2015



UNIT DIMENSIONS

MODEL	WEIGHT	A	B	C	D	E	F	G	H	I	J	K	L	M	N	P	R	S	T	U	V	X	
D500-618	2020 LBS	234-1/2	54-3/8	156-3/8	51-1/8	5-1/4	34-3/16	9-1/2	114-7/16	35	84	133	199-5/8	239-1/16	6-5/16	22-3/8	49-1/2	18	28	8	7	4-1/2	30
D750-618	2025 LBS	234-1/2	54-3/8	156-3/8	51-1/8	5-1/4	34-3/16	9-1/2	114-7/16	35	84	133	199-5/8	239-1/16	6-5/16	22-3/8	49-1/2	18	28	8	7	4-1/2	30
D1000-618	2030 LBS	234-1/2	54-3/8	156-3/8	51-1/8	5-1/4	34-3/16	9-1/2	114-7/16	35	84	133	199-5/8	239-1/16	6-5/16	22-3/8	49-1/2	18	28	8	7	4-1/2	30
D1500-920	3205 LBS	232-1/8	60-1/8	171-3/8	59-1/8	5-1/4	41-1/4	13-9/16	131	42	115-3/16	171-3/16	235-7/8	303-7/8	5-1/4	31-1/2	56-3/16	23-1/2	33	10	11	8-1/2	36
D1500-920	3220 LBS	232-1/8	60-1/8	171-3/8	59-1/8	5-1/4	41-1/4	13-9/16	131	42	115-3/16	171-3/16	235-7/8	303-7/8	5-1/4	31-1/2	56-3/16	23-1/2	33	10	11	8-1/2	36

BIU RANGE (QB#)

MODEL	BURNER LENGTH	BIU LOW	BIU HIGH	MIN	MAX	GAS PRESSURE	GAS CONNECTION	TONNAGE RANGE	MIN	MAX	FILTER SIZE & QTY	MAX. FILTER VELOCITY
D500-618	12"	18"	7" VC	14" VC	15 TON	15 TON	15 TON	15 TON	15 TON	15 TON	20"x25"x2" (2)	8000 CFM = 348 FPM
D750-618	18"	27"	7" VC	14" VC	15 TON	15 TON	15 TON	15 TON	15 TON	15 TON	20"x25"x2" (2)	8000 CFM = 348 FPM
D1000-618	24"	36"	7" VC	14" VC	15 TON	15 TON	15 TON	15 TON	15 TON	15 TON	20"x25"x2" (2)	8000 CFM = 348 FPM
D1500-920	24"	36"	7" VC	14" VC	15 TON	15 TON	15 TON	15 TON	15 TON	15 TON	16"x20"x2" (3)	61300 CFM = 495 FPM
D1500-920	30"	43"	7" VC	5 PSI	15 TON	15 TON	15 TON	15 TON	15 TON	15 TON	16"x20"x2" (3)	61300 CFM = 495 FPM

ADD CONDENSING UNIT WEIGHT TO WEIGHT IN TABLE ABOVE

MODEL	WEIGHT	#1	#2	#3	CC	DD	EE
15 TON-G18	588 LBS	5 TON	5 TON	5 TON	29-15/16	73-5/16	68-1/16
15 TON-920	588 LBS	5 TON	5 TON	5 TON	29-15/16	94-5/16	89-1/16

CONDENSER INFORMATION

OPTIONAL MIXING BOX FILTERS

EXHAUST UNIT DIMENSIONS

MODEL #	EXHAUST UNIT DIMENSIONS	ZZ
DUI2	14-1/2	22
DUI1	18-1/2	27-1/4
DUI3	21-1/2	30-1/4
DUI5	23	33-3/4
DUI8	23-1/2	39-3/8
DUI20	29-1/2	38-7/8
DUI24	30-5/8	43-3/8
DUI30	33-1/2	52-3/4

ALL DIMENSIONS ARE NOMINAL AND GIVEN IN INCHES

Direct Fired Profile Plate Assembly

Direct Fired Profile Plate Specifications:

Direct fired burners shall have patented DIS Patent No. US669923B2, self-adjusting profile plates designed to ensure proper air velocity and pressure drop across the burner. Profile plates shall allow burners to achieve clean combustion by limiting by-product levels to a maximum of 50ppm of carbon monoxide (CO) and 100ppm of nitrogen dioxide (NO2).

Application: Spring loaded burner profile plates are engineered to automatically react to the magnitude of pressure drop across the burner. Profile plates are designed for demand control ventilation (DCV) requirements. With this feature, all DF units are designed for demand control ventilation (DCV) requirements.

General Construction:

Profile plates shall be formed from G90 galvanized steel.

Profile plates shall vary in size per unit, some plates on the discharge of the burner.

Design shall incorporate proper thermal expansion/contraction by permanently mounted spring hinges.

Spring hinges shall be made from plated steel.