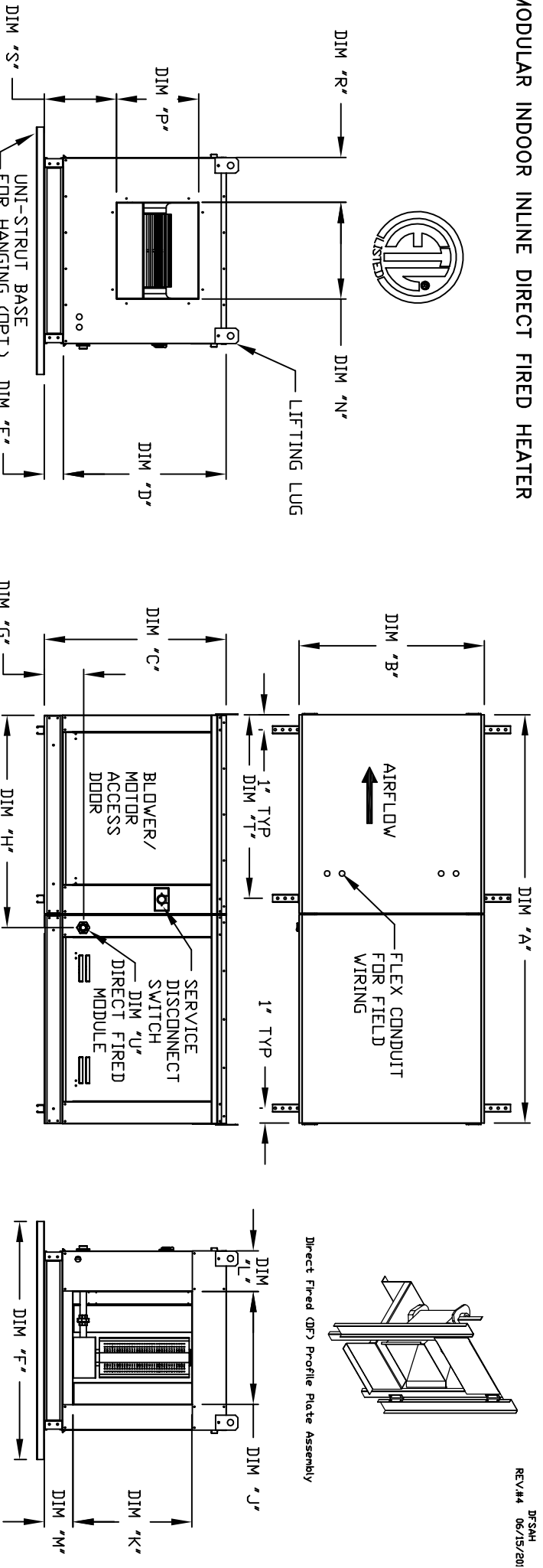


MODULAR INDOOR INLINE DIRECT FIRED HEATER



ALL DIMENSIONS ARE NOMINAL AND GIVEN IN INCHES.

MODEL	WEIGHT	UNIT DIMENSIONS										INTAKE OPENING					DISCHARGE OPENING				
		A	B	C	D	E	F	G	H	J	K	L	M	N	P	R	S	T			
D.250-G10	550 LBS	74-3/8	27-3/8	29-3/4	26-1/16	3-3/4	36	7-13/16	34-13/16	16	18	8-1/8	5-3/4	13-1/4	11-1/2	6-3/8	11-7/8	31-1/8			
D.500-G10	555 LBS	74-3/8	27-3/8	29-3/4	26-1/16	3-3/4	36	7-13/16	34-13/16	16	18	8-1/8	5-3/4	13-1/4	11-1/2	6-3/8	11-7/8	31-1/8			
D.250-G15	775 LBS	82-3/8	37-3/8	36-3/4	33-1/16	3-3/4	48	7-13/16	42-13/16	22-3/4	24	8-1/8	5-3/4	18-3/4	16	8-5/8	14-1/16	39-1/8			
D.500-G15	780 LBS	82-3/8	37-3/8	36-3/4	33-1/16	3-3/4	48	7-13/16	42-13/16	22-3/4	24	8-1/8	5-3/4	18-3/4	16	8-5/8	14-1/16	39-1/8			
D.750-G15	785 LBS	82-3/8	37-3/8	36-3/4	33-1/16	3-3/4	48	7-13/16	42-13/16	22-3/4	24	8-1/8	5-3/4	18-3/4	16	8-5/8	14-1/16	39-1/8			
D.500-G18	880 LBS	87-3/8	41-3/8	43-3/8	38-1/16	5-1/4	60	9-1/2	47-13/16	30	30	8-1/8	7-1/2	22	19	17-7/8	44-1/8				
D.750-G18	885 LBS	87-3/8	41-3/8	43-3/8	38-1/16	5-1/4	60	9-1/2	47-13/16	30	30	8-1/8	7-1/2	22	19	17-7/8	44-1/8				
D.1000-G18	890 LBS	87-3/8	41-3/8	43-3/8	38-1/16	5-1/4	60	9-1/2	47-13/16	30	30	8-1/8	7-1/2	22	19	17-7/8	44-1/8				
D.1000-G20	1425 LBS	118-1/2	48-7/16	51-3/8	46-1/8	5-1/4	60	13-9/16	66-5/16	34	36	10-3/16	7-1/2	24-7/8	24-7/8	11-1/16	19-1/8	63-3/16			
D.1500-G20	1440 LBS	118-1/2	48-7/16	51-3/8	46-1/8	5-1/4	60	13-9/16	66-5/16	34	36	10-3/16	7-1/2	24-7/8	24-7/8	11-1/16	19-1/8	63-3/16			
D.2000-G25	1935 LBS	128-1/2	59-3/16	58-3/8	53-1/8	5-1/4	72	13-3/4	76-7/16	43	43	10-3/16	7-1/2	31-3/8	31-3/8	13-3/16	21-9/16	73-3/16			
D.2500-G25	1950 LBS	128-1/2	59-3/16	58-3/8	53-1/8	5-1/4	72	13-3/4	76-7/16	43	43	10-3/16	7-1/2	31-3/8	31-3/8	13-3/16	21-9/16	73-3/16			

UNIT INFORMATION:

MODEL	BTU RANGE (MBH)			GAS PRESSURE		GAS CONNECTION	
	BURNER LENGTH	BTU LOW	BTU HIGH	MIN	MAX	"U" (NPT)	"U" (NPT)
D.250-G10	6"	18	275	7" WC	14" WC	3/4	3/4
D.500-G10	12"	18	550	7" WC	14" WC	3/4	3/4
D.250-G15	6"	18	275	7" WC	14" WC	1	1
D.500-G15	12"	18	550	7" WC	14" WC	1	1
D.750-G15	18"	27.5	825	7" WC	14" WC	1	1
D.500-G18	12"	18	550	7" WC	14" WC	1	1
D.750-G18	18"	27.5	825	7" WC	14" WC	1	1
D.1000-G18	24"	36.6	1100	7" WC	14" WC	1	1
D.1000-G20	24"	36.6	1100	7" WC	14" WC	1	1
D.1500-G20	30"	45.8	1375	7" WC	5 PSI	1-1/4	1-1/4
D.2000-G25	48"	73.3	2200	7" WC	5 PSI	1-1/2	1-1/2
D.2500-G25	60"	91.6	2750	7" WC	5 PSI	1-1/2	1-1/2

Direct Fired Profile Plate Specifications:

Description: Direct fired burners shall have patented US Patent No. US6629523B2, self-adjusting profile plates designed to ensure proper air velocity and pressure drop across the burner. Profile plates shall allow burners to achieve clean combustion by limiting by-product levels to a maximum of 0.5ppm of carbon monoxide (CO), and 0.5ppm of nitrogen dioxide (NO2).

Applications: Spring-loaded burner profile plates are engineered to automatically react to the momentum of a fresh air stream, without the need for any motors or actuators to mechanically adjust them. With this feature, all DF units are designed for demand control ventilation (DCV) requirements.

Certifications: All profile plate assemblies shall be included in the DF unit's ETL listing and comply with combined safety standards ANSI Z83.4 and CSA 3.7 (non-recirculating DF heaters) and ANSI Z83.18 (recirculating DF heaters).

General Construction: Profile plates shall be formed from G90 galvanized steel.

Profile Plate Hinge: Profile plates shall be mounted to the same plane as the discharge of the burner. Design shall incorporate properly torqued, permanently mounted spring hinges.

Spring hinges shall be made from plated steel.