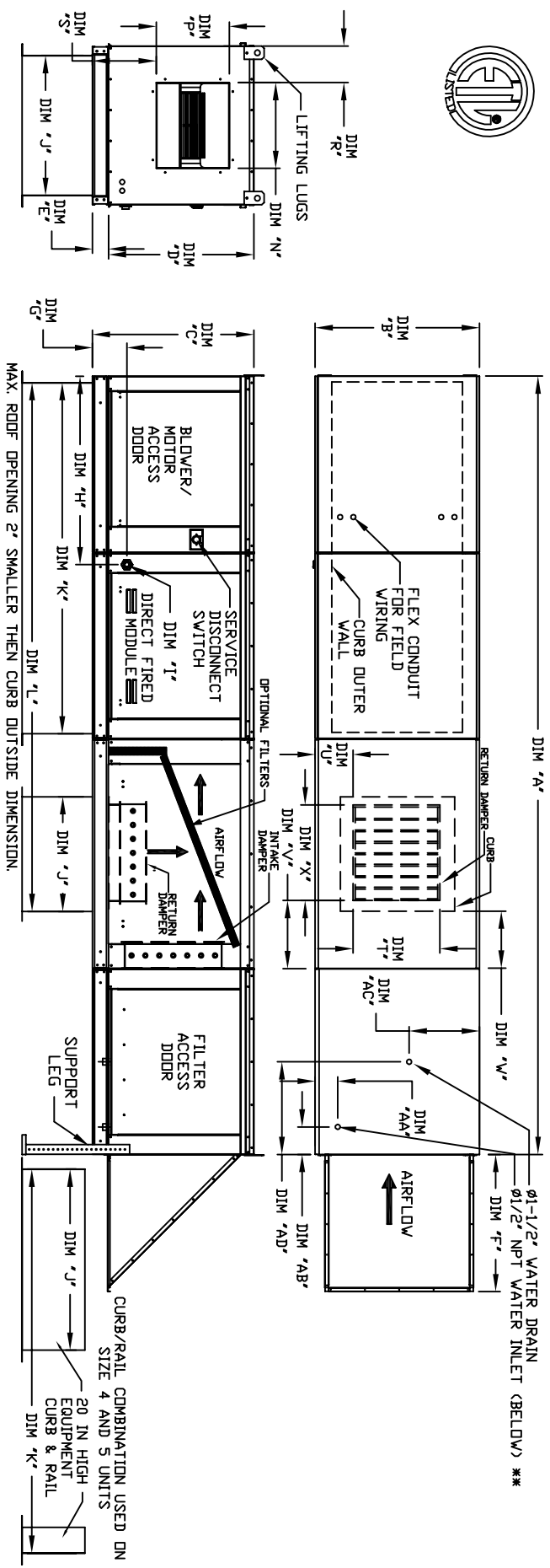


MODULAR OUTDOOR SIDE DISCHARGE DIRECT FIRED RECIRCULATING HEATER WITH EVAPORATIVE COOLER AND SCREEN INTAKE

REV. 02/2016



ALL DIMENSIONS ARE NOMINAL AND GIVEN IN INCHES.

MODEL	UNIT SIZE	UNIT DIMENSIONS				BELT DRIVE DISCHARGE OPENING				DIRECT DRIVE DISCHARGE OPENING				RETURN DAMPER OPENING				WATER INLET		DRAIN OPENING									
		A	B	C	D	E	F	G	H	I	J	K	L	M	N	O	P	Q	R	S	T	U	V	W	X	Y	AA	AB	AC
D-250	1	148-7/8	27-3/8	29-3/4	26-1/6	3-3/4	22-3/8	7-13/16	34-13/16	21	71	102-7/16	13-1/4	11-1/2	6-3/8	11-7/8	17-1/4	15-1/2	4-3/8	8-15/16	14	8	14	12-1/2	18	4-1/2	6-1/4	13	15
D-500	2	156-7/8	27-3/8	36-3/4	26-1/6	3-3/4	22-3/8	7-13/16	34-13/16	31	79	115-7/16	13-1/4	11-1/2	6-3/8	11-7/8	17-1/4	15-1/2	4-3/8	8-15/16	14	8	14	12-1/2	18	4-1/2	6-1/4	13	15
D-750	3	156-7/8	27-3/8	36-3/4	26-1/6	3-3/4	22-3/8	7-13/16	34-13/16	31	79	115-7/16	13-1/4	11-1/2	6-3/8	11-7/8	17-1/4	15-1/2	4-3/8	8-15/16	14	8	14	12-1/2	18	4-1/2	6-1/4	13	15
D-1000	4	167-7/8	41-3/8	43-3/8	26-1/6	3-3/4	22-3/8	7-13/16	34-13/16	31	79	115-7/16	13-1/4	11-1/2	6-3/8	11-7/8	17-1/4	15-1/2	4-3/8	8-15/16	14	8	14	12-1/2	18	4-1/2	6-1/4	13	15
D-1500	5	167-7/8	41-3/8	43-3/8	26-1/6	3-3/4	22-3/8	7-13/16	34-13/16	31	79	115-7/16	13-1/4	11-1/2	6-3/8	11-7/8	17-1/4	15-1/2	4-3/8	8-15/16	14	8	14	12-1/2	18	4-1/2	6-1/4	13	15
D-2000	6	167-7/8	41-3/8	43-3/8	26-1/6	3-3/4	22-3/8	7-13/16	34-13/16	31	79	115-7/16	13-1/4	11-1/2	6-3/8	11-7/8	17-1/4	15-1/2	4-3/8	8-15/16	14	8	14	12-1/2	18	4-1/2	6-1/4	13	15
D-2500	7	167-7/8	41-3/8	43-3/8	26-1/6	3-3/4	22-3/8	7-13/16	34-13/16	31	79	115-7/16	13-1/4	11-1/2	6-3/8	11-7/8	17-1/4	15-1/2	4-3/8	8-15/16	14	8	14	12-1/2	18	4-1/2	6-1/4	13	15

MODEL	UNIT SIZE	BURNER CAPACITY (GPH)	GAS PRESSURE		CONNECTION	STANDARD EVAPORATIVE COOLING UNIT		CENTRE EVAPORATIVE COOLING UNIT		FILTER SIZE & QTY		OPTIONAL MIXING BOX FILTERS				
			MAX	MIN		MAX CFM	NOZZLES	MAX CFM	NOZZLES	MAXIMUM FLOW RATE	MAXIMUM FILTER VELOCITY					
D-250	1	18	7"	14" VC	3/4"	860 LBS	20"x20"x2"	(3)	406 FPM	6	3 GPH	16"x20"x2"	(3)	2000 CFM = 572 FPM	10"x16"x2"	(5)
D-500	2	18	7"	14" VC	3/4"	865 LBS	16"x20"x2"	(3)	406 FPM	6	3 GPH	16"x20"x2"	(3)	2000 CFM = 572 FPM	10"x16"x2"	(5)
D-750	3	18	7"	14" VC	3/4"	1205 LBS	16"x20"x2"	(3)	406 FPM	10	5 GPH	16"x20"x2"	(3)	2000 CFM = 696 FPM	16"x20"x2"	(4)
D-1000	4	18	7"	14" VC	3/4"	1215 LBS	16"x20"x2"	(3)	429 FPM	10	5 GPH	16"x20"x2"	(3)	2000 CFM = 696 FPM	16"x20"x2"	(4)
D-1500	5	18	7"	14" VC	3/4"	1450 LBS	16"x20"x2"	(3)	429 FPM	10	5 GPH	16"x20"x2"	(3)	2000 CFM = 696 FPM	16"x20"x2"	(4)
D-2000	6	18	7"	14" VC	3/4"	1475 LBS	20"x25"x2"	(3)	348 FPM	14	7 GPH	14"x10"x2"	(6)	2000 CFM = 762 FPM	15"x20"x2"	(4)
D-2500	7	18	7"	14" VC	3/4"	1460 LBS	20"x25"x2"	(3)	348 FPM	14	7 GPH	14"x10"x2"	(6)	2000 CFM = 762 FPM	15"x20"x2"	(4)
D-3000	8	24	7"	14" VC	1"	2330 LBS	20"x25"x2"	(3)	572 FPM	24	12 GPH	16"x20"x2"	(10)	21000 CFM = 743 FPM	18"x25"x2"	(4)
D-4000	9	30	7"	14" VC	1-1/2"	3045 LBS	16"x20"x2"	(12)	572 FPM	24	12 GPH	16"x20"x2"	(10)	21000 CFM = 743 FPM	18"x25"x2"	(4)
D-5000	10	48	7"	14" VC	1-1/2"	3080 LBS	20"x25"x2"	(12)	572 FPM	30	15 GPH	16"x20"x2"	(12)	20"x25"x2"	(12)	
D-6000	11	60	7"	14" VC	1-1/2"	3065 LBS	20"x25"x2"	(12)	638 FPM	30	15 GPH	16"x20"x2"	(12)	14.5"x19"x2"	(12)	

**Direct Fired Profile Plate Specifications**

Direct fired burners shall have patented US Patent No. US6695282B2, self-adjusting profile plates designed to ensure proper air velocity and pressure drop across the burner. Profile plates are made from aluminum alloy 6061-T6. Profile plates are designed to meet the requirements of the National Fire Protection Association (NFPA) and the International Brotherhood of Fire Alarm and Signaling (IBFAS) for use in fire alarm and signaling applications.

Spring-loaded burner profile plates are engineered to automatically react to the movement of a fresh air stream, without the need for any motors or actuators to mechanically adjust them. With this feature, all DF units are designed for demand control ventilation (DCV) requirements.

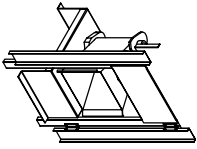
Direct fired burner assemblies shall be included in the DF unit's ETL listing and comply with combined safety standards ANSI Z69.4 and CSA 3.7 over-recirculating DF heaters and ANSI Z69.4 over-recirculating DF heaters.

**General Construction**

Profile plates shall be formed from G30 galvanized steel.

Profile plates shall be mounted along the same plane as the discharge of the burner.

Design shall incorporate proper torque, permanently mounted spring hinges.



Direct Fired DF Profile Plate Assembly