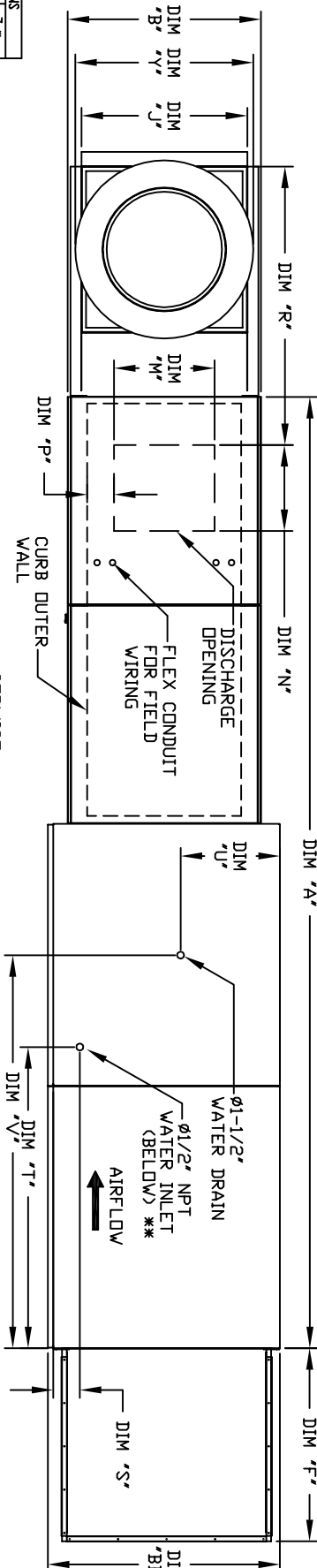


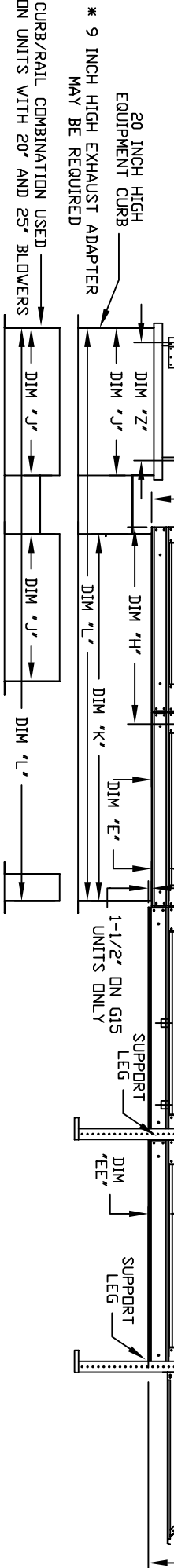
MODULAR OUTDOOR DOWN DISCHARGE DIRECT FIRED HEATER-ROOF TOP PACKAGE WITH V-BANK, LPD EVAPORATIVE COOLER AND SCREEN INTAKE

S1VB.PRC.DIM.DIART  
REV.03 05/05/20



EXHAUST UNIT DIMENSIONS

MODEL #	X	Y	Z
NC200FA	14-1/2	22	19
NC200FA	18-1/2	27-1/4	21
NC200FA	21-1/2	30-1/4	21
NC200FA	23	33-3/4	24-3/4
NC200FA	23-1/2	33-3/8	28
NC200FA	28-1/2	38-7/8	28
NC200FA	30-3/8	43-3/8	33
NC200FA	33-1/2	52-3/4	40

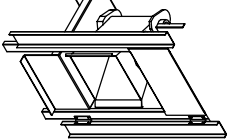


\* 9 INCH HIGH EXHAUST ADAPTER MAY BE REQUIRED

ALL DIMENSIONS ARE NOMINAL AND GIVEN IN INCHES.

MODEL	UNIT DIMENSIONS										CURB										DISCHARGE OPENING										WATER INLET										DRAIN OPENING									
	A	B	BB	C	CC	D	DD	E	EE	F	G	H	J	K	L	M	N	P	R	S	T	U	V																											
D250-G10	138-7/8	27-3/8	36-3/4	29-3/4	36-3/4	26-1/16	33	3-3/4	3-3/4	30-5/16	7-13/16	34-13/16	21	71	106	13-1/4	11-1/2	3-7/8	36-3/4	4-1/2	38-1/2	18	48-1/4																											
D250-G10	138-7/8	27-3/8	36-3/4	29-3/4	36-3/4	26-1/16	33	3-3/4	3-3/4	30-5/16	7-13/16	34-13/16	21	71	106	13-1/4	11-1/2	3-7/8	36-3/4	4-1/2	38-1/2	18	48-1/4																											
D250-G15	158-7/8	37-3/8	40-3/4	36-3/4	43-3/8	33-1/16	38-1/8	5-1/4	34-3/16	7-13/16	42-13/16	31	79	124	18-3/4	16	6-1/8	50-1/2	4-1/2	44	20	57-1/4																												
D250-G15	158-7/8	37-3/8	40-3/4	36-3/4	43-3/8	33-1/16	38-1/8	5-1/4	34-3/16	7-13/16	42-13/16	31	79	124	18-3/4	16	6-1/8	50-1/2	4-1/2	44	20	57-1/4																												
D250-G18	158-7/8	37-3/8	40-3/4	36-3/4	43-3/8	33-1/16	38-1/8	5-1/4	34-3/16	7-13/16	42-13/16	31	79	124	18-3/4	16	6-1/8	50-1/2	4-1/2	44	20	57-1/4																												
D250-G18	158-7/8	37-3/8	40-3/4	36-3/4	43-3/8	33-1/16	38-1/8	5-1/4	34-3/16	7-13/16	42-13/16	31	79	124	18-3/4	16	6-1/8	50-1/2	4-1/2	44	20	57-1/4																												
D250-G18	158-1/8	41-3/8	47-7/8	43-3/8	51-3/8	38-1/16	46-1/8	5-1/4	47-1/4	9-1/2	47-13/16	35	84	133	22	19	6-1/2	56	4-1/2	41-1/8	23-1/2	52-7/8																												
D250-G18	158-1/8	41-3/8	47-7/8	43-3/8	51-3/8	38-1/16	46-1/8	5-1/4	47-1/4	9-1/2	47-13/16	35	84	133	22	19	6-1/2	56	4-1/2	41-1/8	23-1/2	52-7/8																												
D1000-G20	189-1/4	48-7/16	58-5/8	51-3/8	58-3/8	46-1/8	53-1/8	5-1/4	49-5/8	13-9/16	66-5/16	42	115-3/16	171-3/16	24-7/8	24-7/8	8-9/16	57-1/8	4-1/2	41-1/8	28-7/8	52-7/8																												
D1500-G20	189-1/4	48-7/16	58-5/8	51-3/8	58-3/8	46-1/8	53-1/8	5-1/4	49-5/8	13-9/16	66-5/16	42	115-3/16	171-3/16	24-7/8	24-7/8	8-9/16	57-1/8	4-1/2	41-1/8	28-7/8	52-7/8																												

Direct Fired (DF) Profile Plate Assembly



MAX. ROOF OPENING 2" SMALLER THAN CURB OUTSIDE DIMENSION  
 \*\*MAX. EVAP WATER PRESSURE = 50 PSI @ 70 DEG. F

**CELDEK EVAPORATIVE COOLING UNIT**

TOT. WEIGHT	MEDIA SIZE & QTY	NOZZLES	MAX. FLOW RATE
895 LBS	25"x22"x12"	20	65 GPH
900 LBS	25"x22"x12"	20	65 GPH
1220 LBS	30"x36"x12"	28	84 GPH
1225 LBS	30"x36"x12"	28	84 GPH
1230 LBS	30"x36"x12"	28	84 GPH
1515 LBS	38"x43"x12"	35	101.5 GPH
1520 LBS	38"x43"x12"	35	101.5 GPH
1525 LBS	38"x43"x12"	35	101.5 GPH
2220 LBS	45"x54"x12"	42	126 GPH
2225 LBS	45"x54"x12"	42	126 GPH

**V-BANK FILTER SIZE & QTY**

MODEL	SIZE	QTY
D250-G10	16"x20"x2"	(8)
D250-G10	16"x20"x2"	(8)
D250-G15	20"x25"x2"	(8)
D250-G15	20"x25"x2"	(8)
D250-G18	20"x25"x2"	(8)
D250-G18	20"x25"x2"	(8)
D1000-G18	16"x20"x2"	(15)
D1000-G18	16"x20"x2"	(15)
D1500-G20	20"x25"x2"	(12)
D1500-G20	20"x25"x2"	(12)

**Direct Fired Profile Plate Specifications:**

Description: Direct fired burners shall have patented (US Patent No. US6629538B2), self-adjusting profile plates designed to ensure proper air velocity and pressure drop across the burner. Profile plates shall allow burners to achieve clean combustion by linking by-products (levels) to a reduction of spm or carbon monoxide (CO), and Sippen or Retrogen divide (RDE).

Installation: All burner profile plates are engineered to automatically react to the magnitude of air flow through the burner. Profile plates are designed for use with mechanical or electrical controls. With this feature, all DF units are designed for demand control ventilation (DCV) requirements.

General Construction: Profile plates shall be formed from 600 galvanized steel.

Profile plates shall vary in size per unit.

Profile plates shall be mounted along the same plane as the discharge of the burner.

Design shall incorporate properly torqued, permanently mounted spring hinges.