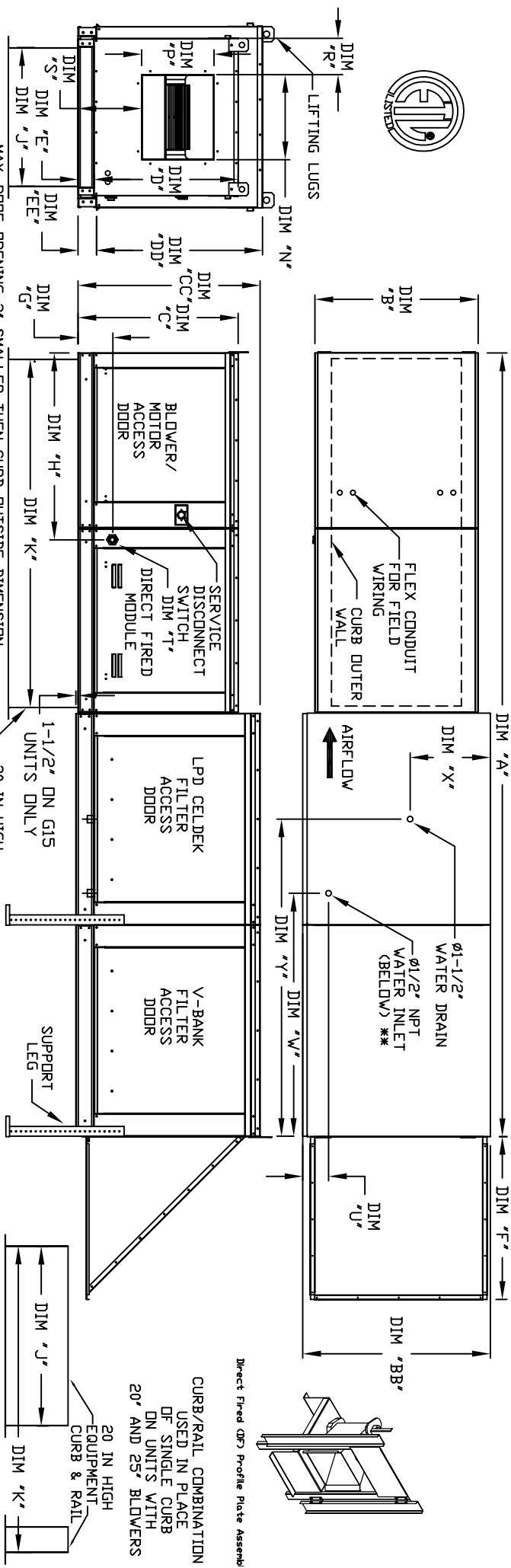


MODULAR OUTDOOR SIDE DISCHARGE DIRECT FIRED HEATER WITH V-BANK, LPD EVAPORATIVE COOLER AND SCREEN INTAKE



MAX. ROOF OPENING 2" SMALLER THEN CURB OUTSIDE DIMENSION.  
ALL DIMENSIONS ARE NOMINAL AND GIVEN IN INCHES.

MODEL	A	B	BB	C	CC	DD	E	EE	F	G	H	J	K	N	P	R	S	U	V	X	Y	
D.250-G10	138-7/8	27-3/8	36-3/4	29-3/4	36-3/4	26-1/16	33	3-3/4	3-3/4	30-5/16	7-13/16	34-13/16	21	71	13-1/4	11-1/2	6-3/8	4-1/2	38-1/2	18	48-1/4	
D.500-G10	138-7/8	27-3/8	36-3/4	29-3/4	36-3/4	26-1/16	33	3-3/4	3-3/4	30-5/16	7-13/16	34-13/16	21	71	13-1/4	11-1/2	6-3/8	4-1/2	38-1/2	18	48-1/4	
D.250-G15	158-7/8	37-3/8	40-3/4	43-3/8	43-3/8	33-1/16	38-1/8	3-3/4	5-1/4	34-3/16	7-13/16	42-13/16	31	79	18-3/4	15	8-5/8	4-1/2	44	20	57-1/4	
D.500-G15	158-7/8	37-3/8	40-3/4	43-3/8	43-3/8	33-1/16	38-1/8	3-3/4	5-1/4	34-3/16	7-13/16	42-13/16	31	79	18-3/4	15	8-5/8	4-1/2	44	20	57-1/4	
D.750-G15	158-7/8	37-3/8	40-3/4	43-3/8	43-3/8	33-1/16	38-1/8	3-3/4	5-1/4	34-3/16	7-13/16	42-13/16	31	79	18-3/4	15	8-5/8	4-1/2	44	20	57-1/4	
D.500-G18	158-1/8	41-3/8	47-7/8	43-3/8	51-3/8	38-1/16	46-1/8	5-1/4	5-1/4	47-1/4	9-1/2	47-13/16	35	84	22	19	9	17-7/8	4-1/2	41-1/8	23-1/2	52-7/8
D.750-G18	158-1/8	41-3/8	47-7/8	43-3/8	51-3/8	38-1/16	46-1/8	5-1/4	5-1/4	47-1/4	9-1/2	47-13/16	35	84	22	19	9	17-7/8	4-1/2	41-1/8	23-1/2	52-7/8
D.1000-G18	158-1/8	41-3/8	47-7/8	43-3/8	51-3/8	38-1/16	46-1/8	5-1/4	5-1/4	47-1/4	9-1/2	47-13/16	35	84	22	19	9	17-7/8	4-1/2	41-1/8	23-1/2	52-7/8
D.1000-G20	189-1/4	48-7/16	58-5/8	51-3/8	58-3/8	46-1/8	53-1/8	5-1/4	5-1/4	49-5/8	13-9/16	66-5/16	42	115-3/16	24-7/8	24-7/8	11-1/16	19-1/8	4-1/2	41-1/8	28-7/8	52-7/8
D.2500-G20	199-1/4	59-3/16	74-7/8	58-3/8	58-3/8	53-1/8	53-1/8	5-1/4	5-1/4	49-5/8	13-3/4	76-7/16	52-3/4	125-3/16	31-3/8	31-3/8	13-3/16	21-1/4	4-1/2	41-1/8	28-7/8	52-7/8
D.2500-G25	199-1/4	59-3/16	74-7/8	58-3/8	58-3/8	53-1/8	53-1/8	5-1/4	5-1/4	49-5/8	13-3/4	76-7/16	52-3/4	125-3/16	31-3/8	31-3/8	13-3/16	21-1/4	4-1/2	41-1/8	28-7/8	52-7/8

MODEL	BURNER BTU RANGE (MBH)	GAS PRESSURE	GAS CONNECTION	UNIT WEIGHT	CELDEx EVAPORATIVE COOLING UNIT	V-BANK FILTER					
MODEL	LENGTH	BTU LOW	BTU HIGH	MIN.	MAX.	"T" (GPD)	TOT. WEIGHT	MEDIA SIZE & QTY	NOZZLES	MAX. FLOW RATE	FILTER SIZE & QTY
D.250-G10	6"	18	27.5	7"	14"	3/4	895 LBS	25"x32"x12"	20	6.5 GPH	16"x20"x2" (8)
D.500-G10	12"	18	55.0	7"	14"	3/4	900 LBS	25"x32"x12"	20	6.5 GPH	16"x20"x2" (8)
D.250-G15	6"	18	27.5	7"	14"	3/4	900 LBS	25"x32"x12"	20	6.5 GPH	16"x20"x2" (8)
D.500-G15	12"	18	55.0	7"	14"	3/4	1225 LBS	30"x36"x12"	28	8.4 GPH	20"x25"x2" (8)
D.750-G15	18"	18	82.5	7"	14"	3/4	1230 LBS	30"x36"x12"	28	8.4 GPH	20"x25"x2" (8)
D.500-G18	12"	18	55.0	7"	14"	3/4	1515 LBS	38"x43"x12"	35	10.15 GPH	16"x20"x2" (15)
D.750-G18	18"	27.5	82.5	7"	14"	3/4	1520 LBS	38"x43"x12"	35	10.15 GPH	16"x20"x2" (15)
D.1000-G18	24"	36.6	110.0	7"	14"	3/4	1525 LBS	38"x43"x12"	35	10.15 GPH	16"x20"x2" (15)
D.1000-G20	24"	43.8	110.0	7"	14"	3/4	2250 LBS	45"x54"x12"	42	12.6 GPH	20"x25"x2" (12)
D.2500-G20	48"	73.3	220.0	7"	14"	3/4	2835 LBS	45"x54"x12"	57	20.1 GPH	20"x25"x2" (12)
D.2500-G25	60"	91.6	275.0	7"	14"	3/4	2880 LBS	45"x54"x12"	57	20.1 GPH	20"x25"x2" (12)

Direct Fired Profile Plate Specifications:  
Direct fired burners shall have patented US Patent No. US6629323, self-adjusting profile plates designed to ensure proper air velocity and pressure drop across the burner. Profile plates shall allow burners to achieve clean combustion by limiting by-product levels to a maximum of 50ppm of carbon monoxide (CO), and 50ppm of nitrogen dioxide (NO2).  
Application: Spring-loaded burner profile plates are engineered to automatically react to the momentum of the burner flame to maintain optimal air velocity and pressure drop across the burner. With this feature, all DF units are designed for demand control ventilation (DCV) requirements.  
Certifications: All assemblies shall be included in the DF unit's FTL (listing and comply with combined gas safety standards ANSI Z83.4 and CSA 37 (non-recirculating DF heaters) and ANSI Z83.18 (recirculating DF heaters).  
General Construction:  
-Profile plates shall be formed from G90 galvanized steel.  
-Profile plates shall vary in size per unit.  
-Profile plates shall be mounted along the same plane as the discharge of the burner.  
-Design shall incorporate properly torqued, permanently mounted spring hinges.  
-Spring hinges shall be made from plated steel.