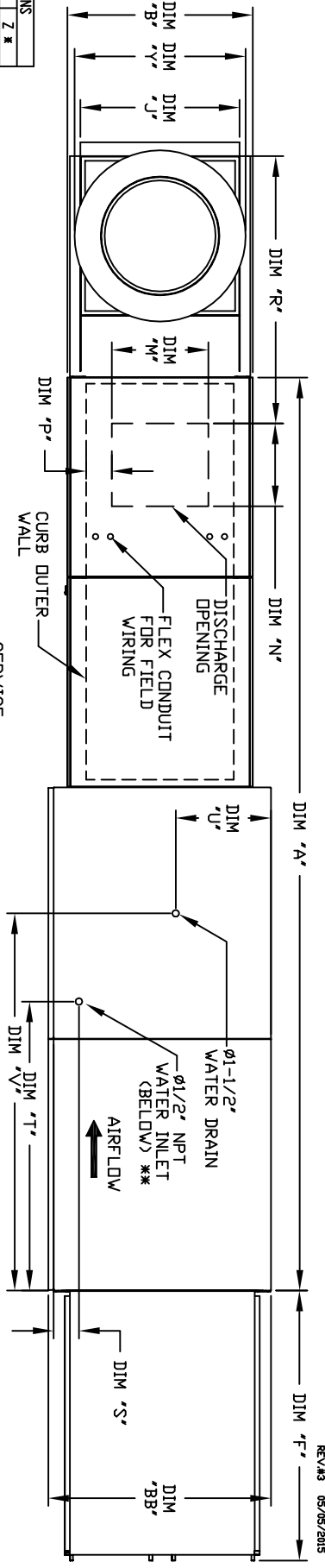
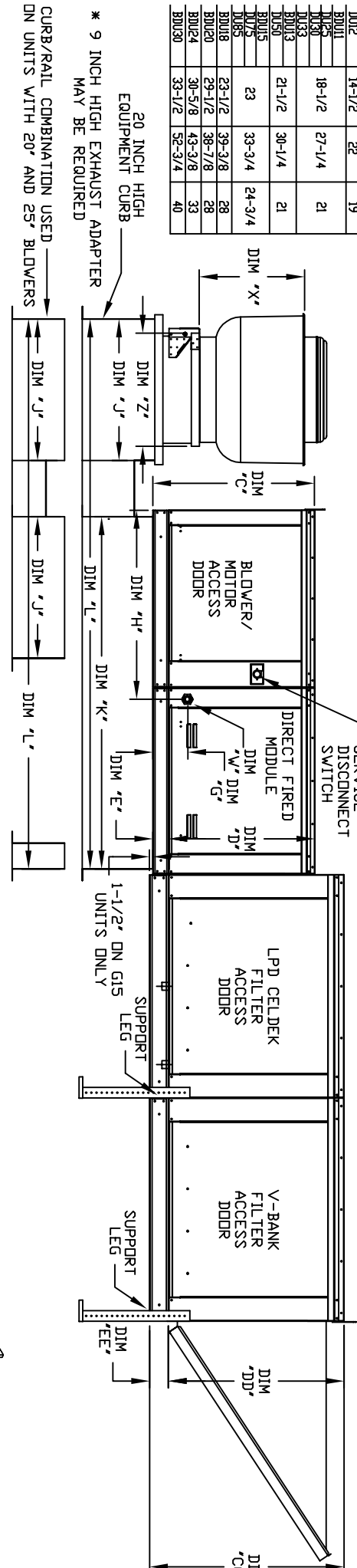


MODULAR OUTDOOR DOWN DISCHARGE DIRECT FIRED HEATER-ROOF TOP PACKAGE WITH V-BANK, LPD EVAPORATIVE COOLER AND INTAKE HOOD

HWLPERC/DHART
REV#3 05/05/2015

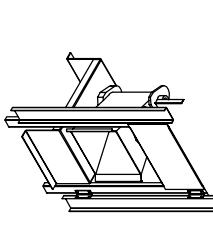


MODEL #	X	Y	Z *
BDU1	14-1/2	22	19
BDU2	18-1/2	27-1/4	21
BDU3	21-1/2	30-1/4	21
BDU4	23	33-3/4	24-3/4
BDU5	33-1/2	39-3/8	28
BDU6	29-1/2	38-1/8	28
BDU7	30-5/8	43-3/8	33
BDU8	33-1/2	52-3/4	40



ALL DIMENSIONS ARE NOMINAL AND GIVEN IN INCHES.

MODEL	A	B	BB	C	CC	D	DD	E	EE	F	G	H	J	K	L	N	P	R	S	T	U	V	
D250-610	138-7/8	27-3/8	36-3/4	29-3/4	36-3/4	26-1/16	33	3-3/4	3-3/4	53-5/8	7-13/16	34-13/16	21	71	106	13-1/4	11-1/2	3-7/8	36-3/4	4-1/2	38-1/2	18	48-1/4
D200-610	138-7/8	27-3/8	36-3/4	29-3/4	36-3/4	26-1/16	33	3-3/4	3-3/4	53-5/8	7-13/16	34-13/16	21	71	106	13-1/4	11-1/2	3-7/8	36-3/4	4-1/2	38-1/2	18	48-1/4
D150-615	138-7/8	27-3/8	36-3/4	29-3/4	36-3/4	26-1/16	33	3-3/4	3-3/4	53-5/8	7-13/16	34-13/16	21	71	106	13-1/4	11-1/2	3-7/8	36-3/4	4-1/2	38-1/2	18	48-1/4
D1250-615	138-7/8	27-3/8	36-3/4	29-3/4	36-3/4	26-1/16	33	3-3/4	3-3/4	53-5/8	7-13/16	34-13/16	21	71	106	13-1/4	11-1/2	3-7/8	36-3/4	4-1/2	38-1/2	18	48-1/4
D1500-615	138-7/8	27-3/8	36-3/4	29-3/4	36-3/4	26-1/16	33	3-3/4	3-3/4	53-5/8	7-13/16	34-13/16	21	71	106	13-1/4	11-1/2	3-7/8	36-3/4	4-1/2	38-1/2	18	48-1/4
D1750-618	138-1/8	41-3/8	47-1/8	43-3/8	51-3/8	38-1/16	46-1/8	5-1/4	5-1/4	76-3/8	9-1/2	47-13/16	35	84	133	22	19	6-1/2	56	4-1/2	41-1/8	23-1/2	52-7/8
D1000-920	189-1/4	48-7/16	58-5/8	51-3/8	58-3/8	46-1/8	53-1/8	5-1/4	5-1/4	71-3/8	13-9/16	66-5/16	42	115-3/16	171-3/16	24-7/8	24-7/8	8-9/16	57-1/8	4-1/2	41-1/8	28-7/8	52-7/8



MODEL	BURNER	BTU RANGE (GMBH)	GAS PRESSURE	GAS CONNECTION	UNIT DIMENSIONS	CELDK EVAPORATIVE COOLING UNIT	INTAKE HOOD	V-BANK									
	BTU LOW	BTU HIGH	MIN.	MAX.	"R" (NPT)	TOT. WEIGHT	HEAD. SIZE & QTY	NOZZLES	MAX. FLOW RATE	FILTER SIZE & QTY	FILTER SIZE & QTY	DISCHARGE OPENING	WATER INLET	DRAIN OPENING			
D250-610	18	275	7" VC	14" VC	3/4	955 LBS	25"x28"x12"	20	6.5 GPH	20"x25"x2" (3)	16"x20"x2" (3)	3-7/8	36-3/4	4-1/2	38-1/2	18	48-1/4
D200-610	18	550	7" VC	14" VC	3/4	930 LBS	25"x28"x12"	20	6.5 GPH	20"x25"x2" (3)	16"x20"x2" (3)	3-7/8	36-3/4	4-1/2	38-1/2	18	48-1/4
D150-615	18	275	7" VC	14" VC	3/4	1260 LBS	30"x36"x12"	28	8.4 GPH	16"x20"x2" (6)	20"x25"x2" (3)	3-7/8	36-3/4	4-1/2	38-1/2	18	48-1/4
D1250-615	18	550	7" VC	14" VC	3/4	1260 LBS	30"x36"x12"	28	8.4 GPH	16"x20"x2" (6)	20"x25"x2" (3)	3-7/8	36-3/4	4-1/2	38-1/2	18	48-1/4
D1500-615	18	550	7" VC	14" VC	3/4	1260 LBS	30"x36"x12"	28	8.4 GPH	16"x20"x2" (6)	20"x25"x2" (3)	3-7/8	36-3/4	4-1/2	38-1/2	18	48-1/4
D1750-618	18	275	7" VC	14" VC	3/4	1625 LBS	38"x43"x12"	35	10.15 GPH	16"x20"x2" (10)	20"x25"x2" (12)	6-1/2	56	4-1/2	41-1/8	23-1/2	52-7/8
D1000-920	24	366	7" VC	14" VC	1-1/4	1630 LBS	38"x43"x12"	35	10.15 GPH	16"x20"x2" (10)	20"x25"x2" (12)	6-1/2	56	4-1/2	41-1/8	23-1/2	52-7/8
D1500-920	30	458	7" VC	5 PSI	1-1/4	2310 LBS	43"x54"x12"	42	12.6 GPH	20"x25"x2" (12)	20"x25"x2" (12)	8-9/16	57-1/8	4-1/2	41-1/8	28-7/8	52-7/8

MAX. ROOF OPENING 2' SMALLER THAN CURB OUTSIDE DIMENSION
 **MAX. EVAP WATER PRESSURE = 50 PSI @ 70 DEG. F

General Construction
 Profile plates shall be formed from G90 galvanized steel.
 Profile plates shall be mounted along the same plane as the discharge of the burner.
 Profile plates shall be permanently mounted spring fingers.
 Spring fingers shall be made from plated steel.

Direct Fired Profile Plate Specifications
 Direct fired burners shall have patented US Patent No. US6692328B2, self-adjusting profile plates designed to ensure proper air velocity and pressure drop across the burner. Profile plates shall allow burners to achieve optimum combustion by leveling products levels to a position of 90 degrees (90°), and 180 degrees (180°).
 Installation:
 All profile plates are engineered to automatically react to the momentum of a fresh air stream, without the need for any motors or actuators to mechanically adjust them. With this feature, all DF units are designed for demand control ventilation (DCV) requirements.
 All profile plates assemblies shall be included in the DF unit's ETL listing and comply with combined safety standards ANSI Z83.4 and CSA 3.7 (non-recirculating DF heaters) and ANSI Z83.18 (recirculating DF heaters).