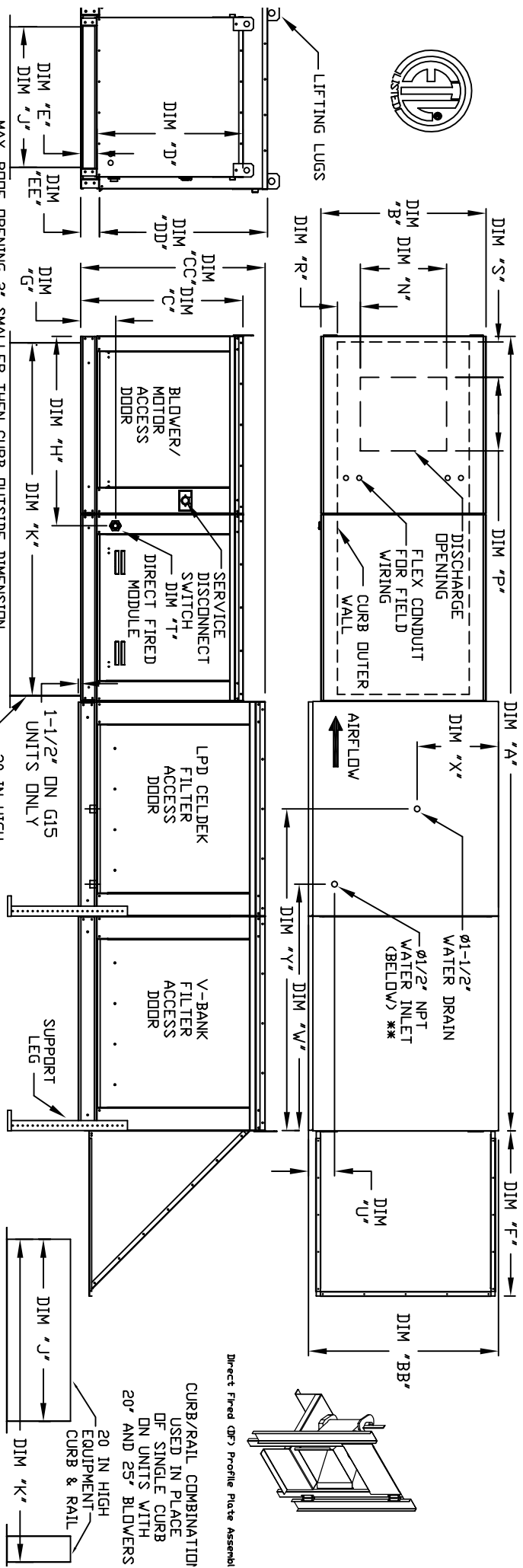


MODULAR OUTDOOR DOWN DISCHARGE DIRECT FIRED HEATER WITH V-BANK, LPD EVAPORATIVE COOLER AND SCREEN INTAKE

REV#S 02/05/2013



MAX. ROOF OPENING 2" SMALLER THEN CURB OUTSIDE DIMENSION.

ALL DIMENSIONS ARE NOMINAL AND GIVEN IN INCHES.

MODEL	A	B	BB	C	CC	D	DD	E	EE	F	G	H	J	K	N	P	R	S	U	W	X	Y
D.250-G10	138-7/8	27-3/8	36-3/4	29-3/4	36-3/4	26-1/16	33	3-3/4	3-3/4	30-5/16	7-13/16	34-13/16	21	71	13-1/4	11-1/2	3-7/8	1-3/4	4-1/2	38-1/2	18	48-1/4
D.500-G10	138-7/8	27-3/8	36-3/4	29-3/4	36-3/4	26-1/16	33	3-3/4	3-3/4	30-5/16	7-13/16	34-13/16	21	71	13-1/4	11-1/2	3-7/8	1-3/4	4-1/2	38-1/2	18	48-1/4
D.750-G10	158-7/8	37-3/8	40-3/4	36-3/4	43-3/8	33-1/16	38-1/8	3-3/4	5-1/4	34-3/16	7-13/16	42-13/16	31	79	18-3/4	16	6-1/8	8-5/16	4-1/2	44	20	57-1/4
D.1000-G10	158-7/8	37-3/8	40-3/4	36-3/4	43-3/8	33-1/16	38-1/8	3-3/4	5-1/4	34-3/16	7-13/16	42-13/16	31	79	18-3/4	16	6-1/8	8-5/16	4-1/2	44	20	57-1/4
D.1500-G10	158-7/8	37-3/8	40-3/4	36-3/4	43-3/8	33-1/16	38-1/8	3-3/4	5-1/4	34-3/16	7-13/16	42-13/16	31	79	18-3/4	16	6-1/8	8-5/16	4-1/2	44	20	57-1/4
D.2000-G10	158-7/8	37-3/8	40-3/4	36-3/4	43-3/8	33-1/16	38-1/8	3-3/4	5-1/4	34-3/16	7-13/16	42-13/16	31	79	18-3/4	16	6-1/8	8-5/16	4-1/2	44	20	57-1/4
D.2500-G10	158-7/8	37-3/8	40-3/4	36-3/4	43-3/8	33-1/16	38-1/8	3-3/4	5-1/4	34-3/16	7-13/16	42-13/16	31	79	18-3/4	16	6-1/8	8-5/16	4-1/2	44	20	57-1/4
D.2500-G18	158-1/8	41-3/8	47-7/8	43-3/8	51-3/8	38-1/16	45-1/8	5-1/4	5-1/4	47-1/4	9-1/2	47-13/16	35	84	22	19	6-1/2	7	4-1/2	41-1/8	23-1/2	52-7/8
D.500-G18	158-1/8	41-3/8	47-7/8	43-3/8	51-3/8	38-1/16	45-1/8	5-1/4	5-1/4	47-1/4	9-1/2	47-13/16	35	84	22	19	6-1/2	7	4-1/2	41-1/8	23-1/2	52-7/8
D.750-G18	158-1/8	41-3/8	47-7/8	43-3/8	51-3/8	38-1/16	45-1/8	5-1/4	5-1/4	47-1/4	9-1/2	47-13/16	35	84	22	19	6-1/2	7	4-1/2	41-1/8	23-1/2	52-7/8
D.1000-G18	158-1/8	41-3/8	47-7/8	43-3/8	51-3/8	38-1/16	45-1/8	5-1/4	5-1/4	47-1/4	9-1/2	47-13/16	35	84	22	19	6-1/2	7	4-1/2	41-1/8	23-1/2	52-7/8
D.1500-G18	189-1/4	48-7/16	58-5/8	51-3/8	58-3/8	46-1/8	53-1/8	5-1/4	5-1/4	49-5/8	13-9/16	66-5/16	42	115-3/16	24-7/8	24-7/8	8-9/16	1-1/8	4-1/2	41-1/8	28-7/8	65-7/8
D.2000-G18	189-1/4	48-7/16	58-5/8	51-3/8	58-3/8	46-1/8	53-1/8	5-1/4	5-1/4	49-5/8	13-9/16	66-5/16	42	115-3/16	24-7/8	24-7/8	8-9/16	1-1/8	4-1/2	41-1/8	28-7/8	65-7/8
D.2500-G18	199-1/4	59-3/16	74-7/8	58-3/8	58-3/8	53-1/8	53-1/8	5-1/4	5-1/4	49-5/8	13-3/4	76-7/16	52-3/4	125-3/16	31-3/8	31-3/8	10-1/16	3-13/16	4-1/2	41-1/8	37-1/2	82-7/8
D.2500-G25	199-1/4	59-3/16	74-7/8	58-3/8	58-3/8	53-1/8	53-1/8	5-1/4	5-1/4	49-5/8	13-3/4	76-7/16	52-3/4	125-3/16	31-3/8	31-3/8	10-1/16	3-13/16	4-1/2	41-1/8	37-1/2	82-7/8

UNIT INFORMATION

MODEL	BURNER	BTU RANGE	(MBH)	GAS PRESSURE	GAS CONNECTION
D.250-G10	6"	18	275	7" WC 14" WC	3/4"
D.500-G10	12"	18	550	7" WC 14" WC	3/4"
D.750-G10	12"	18	275	7" WC 14" WC	1"
D.1000-G10	12"	18	550	7" WC 14" WC	1"
D.1500-G10	12"	18	275	7" WC 14" WC	1"
D.2000-G10	12"	18	550	7" WC 14" WC	1"
D.2500-G10	12"	18	275	7" WC 14" WC	1"
D.500-G18	18"	27.5	825	7" WC 14" WC	1"
D.750-G18	18"	27.5	825	7" WC 14" WC	1"
D.1000-G18	24"	36.6	1100	7" WC 14" WC	1-1/4"
D.1500-G18	24"	36.6	1100	7" WC 14" WC	1-1/4"
D.2000-G18	30"	45.8	1375	7" WC 5 PSI	1-1/2"
D.2500-G18	30"	45.8	1375	7" WC 5 PSI	1-1/2"
D.2500-G25	60"	91.6	2750	7" WC 5 PSI	1-1/2"

MODEL	CELDKX	EVAPORATIVE	COOLING	UNIT
D.250-G10	895	25"x32"x12"	20	6.5 GPH
D.500-G10	900	25"x32"x12"	20	6.5 GPH
D.750-G10	1320	30"x36"x12"	28	8.4 GPH
D.1000-G10	1320	30"x36"x12"	28	8.4 GPH
D.1500-G10	1330	30"x36"x12"	28	8.4 GPH
D.2000-G10	1515	38"x43"x12"	35	10.15 GPH
D.2500-G10	1520	38"x43"x12"	35	10.15 GPH
D.500-G18	1525	38"x43"x12"	35	10.15 GPH
D.750-G18	2220	45"x54"x12"	42	12.6 GPH
D.1000-G18	2230	45"x54"x12"	42	12.6 GPH
D.1500-G18	2235	45"x54"x12"	42	12.6 GPH
D.2000-G18	2885	45"x72"x12"	57	20.1 GPH
D.2500-G18	2880	45"x72"x12"	57	20.1 GPH

MODEL	V-BANK	FILTER	SIZE & QTY
D.250-G10	16"x20"x2"	(8)	
D.500-G10	16"x20"x2"	(8)	
D.750-G10	20"x25"x2"	(8)	
D.1000-G10	20"x25"x2"	(8)	
D.1500-G10	20"x25"x2"	(8)	
D.2000-G10	20"x25"x2"	(8)	
D.2500-G10	20"x25"x2"	(12)	
D.500-G18	16"x20"x2"	(15)	
D.750-G18	16"x20"x2"	(15)	
D.1000-G18	20"x25"x2"	(12)	
D.1500-G18	20"x25"x2"	(12)	
D.2000-G18	20"x25"x2"	(12)	
D.2500-G18	20"x25"x2"	(12)	

Direct Fired Profile Plate Specifications:
 Description: Direct fired burners shall have patented (US Patent No. US6629523B2), self-adjusting profile plates designed to ensure proper air velocity and pressure drop across the burner. Profile plates shall be made of mild steel with a minimum of 16 gauge thickness (levels to a minimum of 0.0625" of Carbon monoxide (CO), and 0.030" of Nitrogen dioxide (NO2)).
 Applications: Spring-loaded burner profile plates are engineered to automatically react to the momentum of a fresh air stream, without the need for any motors or actuators to mechanically adjust them. With this feature, all DF units are designed for demand control ventilation (DCV) requirements.
 Certifications: All profile plate assemblies shall be included in the DF unit's ETL listing and comply with combined safety standards ANSI Z83.4 and CSA 3.7 (non-retracting DF heaters) and ANSI Z83.18 (retracting DF heaters).
 General Construction: Profile plates shall be formed from G90 galvanized steel.
 Profile plates shall vary in size per unit.
 Profile plates shall be mounted along the same plane as the discharge of the burner.
 Profile plates shall be mounted on a spring mechanism.
 Spring hinges shall be made from plated steel.

CURB/RAIL COMBINATIO
 USED IN PLACE
 OF SINGLE CURB
 DN UNITS WITH
 20" AND 25" BLOWERS

Direct Fired (DF) Profile Plate Assembly