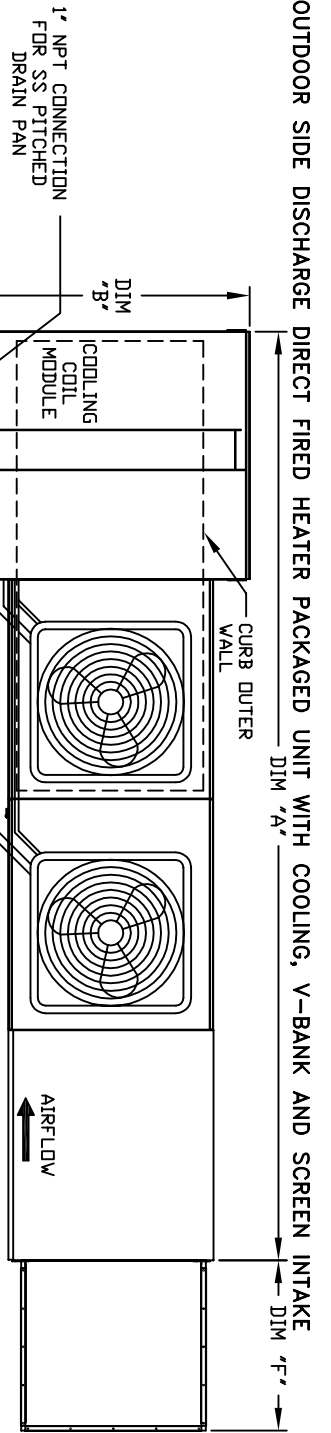
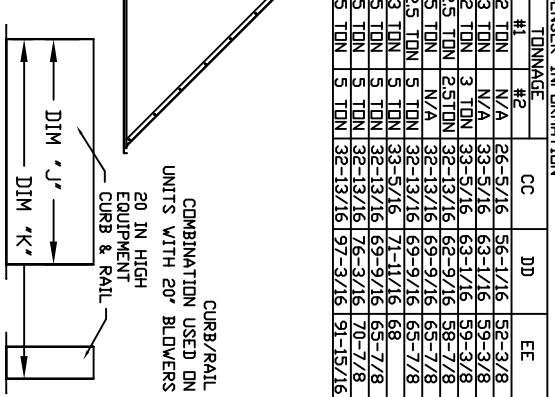
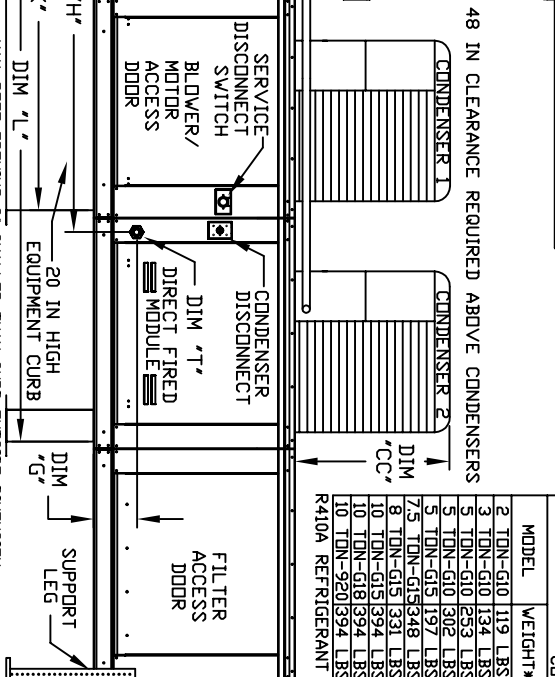
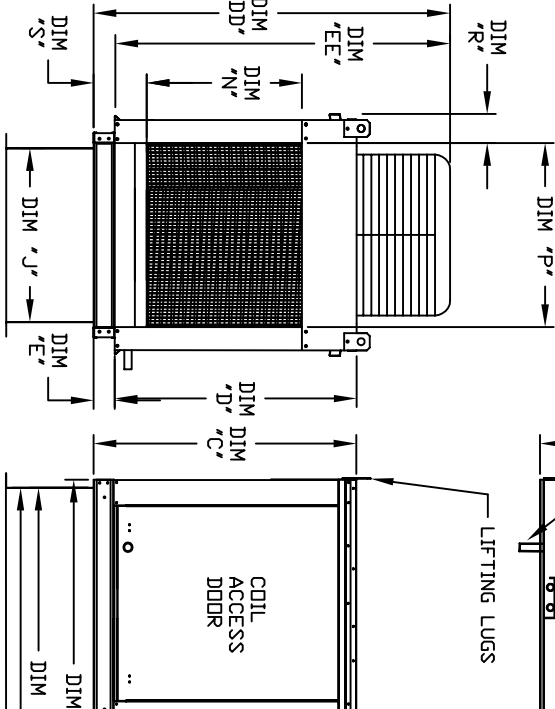


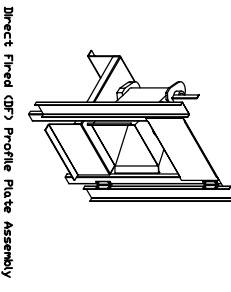
# MODULAR OUTDOOR SIDE DISCHARGE DIRECT FIRED HEATER PACKAGED UNIT WITH COOLING, V-BANK AND SCREEN INTAKE



MODEL	WEIGHT*	TONNAGE	CC	DD	EE
2 TON-G10 119 LBS	2 TON	N/A	26-5/16	56-1/16	52-3/8
3 TON-G10 134 LBS	3 TON	N/A	33-5/16	63-1/16	59-3/8
5 TON-G10 253 LBS	2 TON	3	33-5/16	66-1/16	59-3/8
5 TON-G10 302 LBS	2.5 TON	2.5	32-13/16	62-9/16	58-7/8
5 TON-G15 197 LBS	5 TON	N/A	32-13/16	69-9/16	65-7/8
7.5 TON-G15 348 LBS	2.5 TON	5	32-13/16	69-9/16	65-7/8
8 TON-G15 331 LBS	3 TON	3	33-5/16	71-1/16	68
10 TON-G15 394 LBS	5 TON	3	32-13/16	69-9/16	65-7/8
10 TON-G18 394 LBS	5 TON	5	32-13/16	76-3/16	70-7/8
10 TON-920 394 LBS	5 TON	5	32-13/16	97-3/16	91-15/16



MODEL	WEIGHT*	A	B	C	D	E	F	G	H	I	J	K	L	N	P	R	S
D-250-G10	1000 LBS	148-7/8	39-3/8	42-3/4	39	3-3/4	22-3/8	7-13/16	77-1/16	21	71	113-1/4	17-1/2	16	16	11	5-3/4
D-500-G10	1005 LBS	148-7/8	39-3/8	42-3/4	39	3-3/4	22-3/8	7-13/16	77-1/16	21	71	113-1/4	17-1/2	16	16	11	5-3/4
D-500-G15	1340 LBS	156-7/8	49-3/8	47-3/4	44	3-3/4	30-5/16	7-13/16	85-1/16	31	79	121-1/4	29-3/4	22-3/4	12-5/8	5-3/4	5-3/4
D-500-G15	1350 LBS	156-7/8	49-3/8	47-3/4	44	3-3/4	30-5/16	7-13/16	85-1/16	31	79	121-1/4	29-3/4	22-3/4	12-5/8	5-3/4	5-3/4
D-500-G18	1550 LBS	167-7/8	54-3/8	56-3/8	51-1/8	5-1/4	34-3/16	9-1/2	90-1/16	35	84	126-1/4	29-5/8	30	11-1/2	7-3/8	7-3/8
D-750-G18	1555 LBS	167-7/8	54-3/8	56-3/8	51-1/8	5-1/4	34-3/16	9-1/2	90-1/16	35	84	126-1/4	29-5/8	30	11-1/2	7-3/8	7-3/8
D-1000-920	2440 LBS	208-3/16	60-7/16	64-3/8	59-1/8	5-1/4	47-1/4	13-9/16	120-5/8	42	115-3/16	169-1/2	36-3/4	34	11-1/2	7-3/8	7-3/8
D-1300-920	2435 LBS	208-3/16	60-7/16	64-3/8	59-1/8	5-1/4	47-1/4	13-9/16	120-5/8	42	115-3/16	169-1/2	36-3/4	34	11-1/2	7-3/8	7-3/8



Direct Fired Burner Specifications

MODEL	BURNER LENGTH	BTU RANGE (KBH)	BTU HIGH	GAS PRESSURE (MIN)	GAS PRESSURE (MAX)	GAS CONNECTION (1" (NPT))	TONNAGE RANGE (MIN)	TONNAGE RANGE (MAX)	FILTER SIZE & QTY	MAX. FILTER VELOCITY
D-250-G10	6"	18	275	7" WC	14" WC	3/4	2 Ton	5 Ton	20"x25"x2" (3)	348 FPM
D-500-G10	12"	18	275	7" WC	14" WC	3/4	2 Ton	5 Ton	20"x25"x2" (3)	348 FPM
D-500-G15	12"	18	275	7" WC	14" WC	1	5 Ton	10 Ton	16"x20"x2" (8)	428 FPM
D-500-G15	12"	18	275	7" WC	14" WC	1	5 Ton	10 Ton	16"x20"x2" (8)	428 FPM
D-500-G18	12"	18	275	7" WC	14" WC	1	5 Ton	10 Ton	20"x25"x2" (8)	348 FPM
D-750-G18	18"	275	825	7" WC	14" WC	1	5 Ton	10 Ton	20"x25"x2" (8)	348 FPM
D-1000-G18	24"	365	1100	7" WC	14" WC	1-1/4	10 Ton	10 Ton	20"x25"x2" (8)	348 FPM
D-1300-920	24"	458	1100	7" WC	14" WC	1-1/4	10 Ton	10 Ton	20"x25"x2" (15)	495 FPM
D-1300-920	30"	458	1375	7" WC	14" WC	1-1/4	10 Ton	10 Ton	20"x25"x2" (15)	495 FPM

General Construction  
 -Profile plates shall be formed from G90 galvanized steel.  
 -Profile plates shall vary in size per unit.  
 -Profile plates shall be mounted along the same plane as the discharge of the burner.  
 -Design shall incorporate provisions for torque, permanently mounted spring hinges.  
 -Spring hinges shall be made from plated steel.