

20 INCH HIGH EQUIPMENT CURB
 ** 9 INCH HIGH EXHAUST ADAPTER
 MAY BE REQUIRED

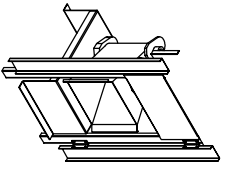
ALL DIMENSIONS ARE NOMINAL AND GIVEN IN INCHES.

MODEL #	EXHAUST UNIT DIMENSIONS
BU1	U
BU2	22
BU11	19
BU12	14-1/2
BU13	27-1/4
BU14	21
BU15	21-1/2
BU16	30-1/4
BU17	21
BU18	33-3/4
BU19	24-3/4
BU20	23
BU21	23-1/2
BU22	32-3/8
BU23	28
BU24	29-1/2
BU25	38-7/8
BU26	28
BU27	30-5/8
BU28	43-3/8
BU29	33
BU30	33-1/2
BU31	52-3/4
BU32	40

MODEL	WEIGHT	UNIT DIMENSIONS										CURB/RAIL		DISCHARGE OPENING				
		A	B	C	D	E	F	G	H	J	K	L	N	P	R	S		
D-250-610	690 LBS	27-3/8	29-3/4	26-1/16	3-3/4	44-3/8	7-13/16	34-13/16	21	71	106	13-1/4	11-1/2	3-7/8	40-9/16			
D-500-610	995 LBS	27-3/8	29-3/4	26-1/16	3-3/4	44-3/8	7-13/16	34-13/16	21	71	106	13-1/4	11-1/2	3-7/8	40-9/16			
D-750-618	1440 LBS	41-3/8	43-3/8	38-1/16	5-1/4	51-5/8	9-1/2	47-13/16	35	84	133	18-3/4	16	6-1/8	55-13/16			
D-1000-618	1870 LBS	48-7/16	51-5/8	46-1/16	5-1/4	58-3/8	10-1/2	54-13/16	35	84	133	22	19	6-1/2	59-5/16			
D-1500-920	2835 LBS	48-7/16	51-5/8	46-1/16	5-1/4	58-3/8	10-1/2	54-13/16	35	84	133	22	19	6-1/2	59-5/16			

ROOF OPENING 2' SMALLER THAN CURB DIMENSION

Direct Fired Profile Plate Specifications:
 Direct fired burners shall have patented US Patents Nos. US5629232, self-inducting profile plates designed to ensure proper air velocity and pressure drop across the burner. Profile plates shall allow burners to achieve clean combustion by limiting by-product levels to a maximum of 5ppm of carbon monoxide (CO), and 0.5ppm of nitrogen dioxide (NO2).
Application:
 Spring-loaded burner profile plates are engineered to automatically react to the momentum of a fresh air stream, tilt the need for any motors or actuators to mechanically adjust them. With this feature, all DF units are designed for demand control ventilation (DCV) requirements.
Specifications:
 Profile plate assemblies shall be included in the DF unit's ETL listing and comply with combined listings for NSF 2834 and SM 37 (non-retracting DF heaters) and NSF 2831B (retracting DF heaters).
General Construction:
 Profile plates shall be formed from G90 galvanized steel.
 Profile plates shall vary in size per unit.
 Profile plates shall be mounted along the same plane as the discharge of the burner.
 Design shall incorporate properly torqued, permanently mounted spring hinges.



Direct Fired (DF) Profile Plate Assembly