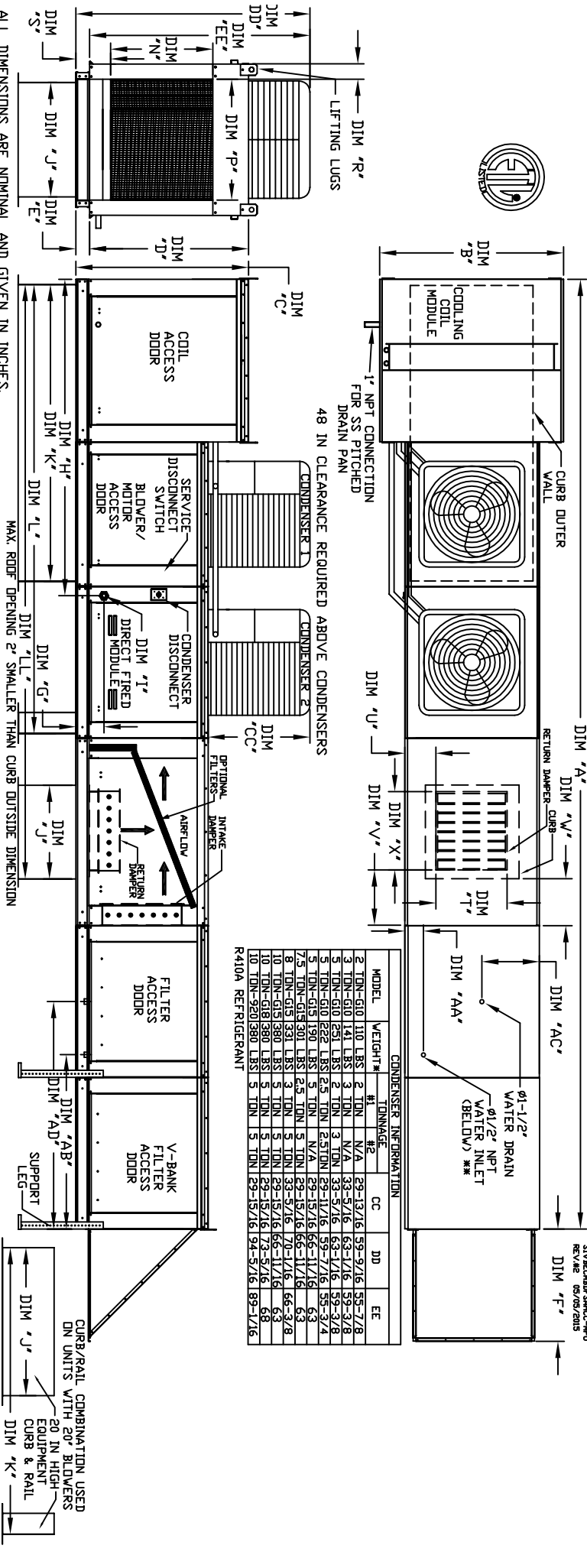


MODULAR OUTDOOR SIDE DISCHARGE DIRECT FIRED RECIRCULATING HEATER WITH COOLING, EVAPORATIVE COOLER INTAKE, V-BANK AND SCREEN INTAKE

STANDARD SAH-C-4H  
REV. 05/09/2015



ALL DIMENSIONS ARE NOMINAL AND GIVEN IN INCHES.

MODEL	UNIT DIMENSIONS			STANDARD EVAPORATIVE COOLING UNIT												CELDOK EVAPORATIVE COOLING UNIT												
	A	B	C	D	E	F	G	H	J	K	L	N	P	R	S	U	V	X	AA	AB	AC	AD						
D250-G10	223-3/8	39-3/8	42-3/4	39	3-3/4	422-3/8	7-13/16	77-1/16	21	71	113-1/4	144-11/16	17-1/2	16	11	5-3/4	14	18	4-1/2	38	1/2	13	48	1/4	20"x25"x2"	(3)	83000 CFM = 348 FPM	
D500-G10	223-3/8	39-3/8	42-3/4	39	3-3/4	422-3/8	7-13/16	77-1/16	21	71	113-1/4	144-11/16	17-1/2	16	11	5-3/4	14	18	4-1/2	38	1/2	13	48	1/4	20"x25"x2"	(3)	83000 CFM = 348 FPM	
D250-G15	231-3/8	49-3/8	47-3/4	44	3-3/4	430-5/16	7-13/16	85-1/16	31	79	121-1/4	157-1/16	29-3/4	12-5/8	5-3/4	22-3/4	8	11	24	4-1/2	38	1/2	18	48	1/4	16"x20"x2"	(8)	86000 CFM = 428 FPM
D500-G15	231-3/8	49-3/8	47-3/4	44	3-3/4	430-5/16	7-13/16	85-1/16	31	79	121-1/4	157-1/16	29-3/4	12-5/8	5-3/4	22-3/4	8	11	24	4-1/2	38	1/2	18	48	1/4	16"x20"x2"	(8)	86000 CFM = 428 FPM
D750-G15	231-3/8	49-3/8	47-3/4	44	3-3/4	430-5/16	7-13/16	85-1/16	31	79	121-1/4	157-1/16	29-3/4	12-5/8	5-3/4	22-3/4	8	11	24	4-1/2	38	1/2	18	48	1/4	16"x20"x2"	(8)	86000 CFM = 428 FPM
D500-G18	248-3/8	54-3/8	56-3/8	51-1/8	5-1/4	432-3/16	9-1/2	90-1/16	35	84	132-1/4	165-11/16	29-3/8	30	11-1/2	7-3/8	8	7	30	4-1/2	44	20	57	1/4	20"x25"x2"	(8)	88000 CFM = 348 FPM	
D750-G18	248-3/8	54-3/8	56-3/8	51-1/8	5-1/4	432-3/16	9-1/2	90-1/16	35	84	132-1/4	165-11/16	29-3/8	30	11-1/2	7-3/8	8	7	30	4-1/2	44	20	57	1/4	20"x25"x2"	(8)	88000 CFM = 348 FPM	
D1000-G18	248-3/8	54-3/8	56-3/8	51-1/8	5-1/4	432-3/16	9-1/2	90-1/16	35	84	132-1/4	165-11/16	29-3/8	30	11-1/2	7-3/8	8	7	30	4-1/2	44	20	57	1/4	20"x25"x2"	(8)	88000 CFM = 348 FPM	
D1500-G20	291-7/8	60-7/16	64-3/8	59-1/8	5-1/4	44-1/4	13-9/16	120-9/8	42	115-3/16	169-1/2	21-1/2	36-3/4	34	12-1/2	7-3/8	8	10	35	4-1/2	41	1/8	23-1/2	52	7/8	16"x20"x2"	(15)	813000 CFM = 495 FPM

MAX. ROOF OPENING 2" SMALLER THAN CURB OUTSIDE DIMENSION

CONDENSER DISCONNECT DIM 'T'

DIRECT FIRED MODULE DIM 'G'

OPTIONAL FILTERS DIM 'CC'

INTAKE DIMMER DIM 'V'

RETURN DIMMER DIM 'X'

CURB DIM 'A'

WATER DRAIN DIM 'AA'

WATER INLET DIM 'AC'

V-BANK FILTER ACCESS DOOR DIM 'AB'

SCREEN DIM 'AD'

LEG DIM 'AE'

CURB/RAIL COMBINATION USED ON UNITS WITH 20" HIGH EQUIPMENT CURB & RAIL DIM 'K'

OPTIONAL MIXING BOX FILTERS

MODEL	LENGTH	BTU RANGE (QBD)	MIN. GAS PRESSURE	MAX. GAS CONNECTION	TONNAGE RANGE	TOT. WEIGHT	MEDIA SIZE & QTY	MAX. FLOW RATE
D250-G10	6'	18	1/2" WC	1/4" VC	3/4	1310 LBS	20"x25"x2" (3)	406 FPM
D500-G10	12'	18	1/2" WC	1/4" VC	3/4	1320 LBS	20"x24"x2" (3)	1050 FPM
D250-G15	6'	18	1/2" WC	1/4" VC	1	1770 LBS	16"x20"x2" (8)	429 FPM
D500-G15	12'	18	1/2" WC	1/4" VC	1	1770 LBS	16"x20"x2" (8)	429 FPM
D750-G15	18'	27.5	1/2" WC	1/4" VC	1	1770 LBS	16"x20"x2" (8)	429 FPM
D500-G18	12'	18	1/2" WC	1/4" VC	1	1770 LBS	16"x20"x2" (8)	429 FPM
D750-G18	18'	27.5	1/2" WC	1/4" VC	1	1770 LBS	16"x20"x2" (8)	429 FPM
D1000-G18	24'	36.6	1/2" WC	1/4" VC	1	2120 LBS	20"x25"x2" (8)	348 FPM
D1500-G20	24'	36.6	1/2" WC	5 PSI	1-1/4	3345 LBS	16"x20"x2" (15)	572 FPM
D1500-G20	30'	45.8	1/2" WC	5 PSI	1-1/4	3360 LBS	16"x20"x2" (15)	572 FPM

MAX. CONDENSING UNIT WEIGHT TO WEIGHT IN TABLE ABOVE

MAX. EVAP WATER PRESSURE = 50 PSI @ 70 DEG. F

Direct Fired Burner Specifications:

Direct fired burners shall have patented US Patent No. US669523B3, self-adjusting profile plates designed to ensure proper air velocity and pressure drop across the burner. Profile plates shall allow burners to achieve clean combustion by limiting by-product levels to a maximum of 50 ppm carbon monoxide (CO), and 50 ppm of nitrogen dioxide (NO2).

Reduction:

Standard burner profile plates are engineered to automatically react to the momentum of a fresh air stream, without the need for any motors or actuators to mechanically adjust them. With this feature, all JP units are designed for demand control ventilation (DCV) requirements.

Direct fired burner profile plates are designed to automatically react to the momentum of a fresh air stream, without the need for any motors or actuators to mechanically adjust them.

Profile plates shall be mounted along the same plane as the discharge of the burner.

Profile plates shall be permanently mounted spring hinges.

Spring hinges shall be made from plated steel.

General Construction:

Profile plates shall be formed from G90 galvanized steel.

Profile plates shall vary in size per unit.

Profile plates shall be permanently mounted spring hinges.

Spring hinges shall be made from plated steel.