

EXHAUST UNIT DIMENSIONS

MODEL #	T	U	V
DUJ2	14-1/2	22	19
DUJ5	18-1/2	27-1/4	21
DUJ3	21-1/2	30-1/4	21
DUJ5	23	33-3/4	24-3/4
DUJ8	23-1/2	39-3/8	28
DUJ20	29-1/2	38-7/8	28
DUJ24	30-5/8	43-3/8	33
DUJ30	33-1/2	52-3/4	40

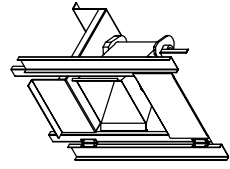
ROOF OPENING 2' SMALLER THAN CURB DIMENSION

UNIT DIMENSIONS

MODEL	WEIGHT	A	B	C	D	E	F	G	H	J	K	L	M	N	P	R	S
D250-610	167-1/4 LBS	39-3/8	42-3/4	39	3-3/4	44-3/8	7-13/16	95-7/16	21	71	106	166-5/8	3-9/16	13-7/8	36-13/16	11-1/2	
D300-610	190 LBS	39-3/8	42-3/4	39	3-3/4	44-3/8	7-13/16	95-7/16	21	71	106	166-5/8	3-9/16	13-7/8	36-13/16	11-1/2	
D350-610	1525 LBS	181-1/4	49-3/8	47-3/4	44	3-3/4	53-3/8	7-13/16	109-7/16	31	79	124	190-5/8	4-5/16	22-3/8	46-9/16	18
D400-610	1520 LBS	181-1/4	49-3/8	47-3/4	44	3-3/4	53-3/8	7-13/16	109-7/16	31	79	124	190-5/8	4-5/16	22-3/8	46-9/16	18
D450-610	1785 LBS	192-1/4	54-3/8	56-3/8	51-1/8	5-1/4	51-5/8	9-1/2	114-7/16	35	84	133	199-5/8	5-5/16	22-3/8	49-1/2	18
D500-610	1790 LBS	192-1/4	54-3/8	56-3/8	51-1/8	5-1/4	51-5/8	9-1/2	114-7/16	35	84	133	199-5/8	5-5/16	22-3/8	49-1/2	18
D550-610	238 LBS	60-7/16	64-3/8	64-3/8	59-1/8	5-1/4	76-3/8	13-9/16	151	42	115-3/16	171-3/16	255-7/8	5-1/4	31-1/2	56-13/16	23-1/2
D600-610	2890 LBS	238-9/16	60-7/16	64-3/8	59-1/8	5-1/4	76-3/8	13-9/16	151	42	115-3/16	171-3/16	255-7/8	5-1/4	31-1/2	56-13/16	23-1/2
D650-610	2835 LBS	238-9/16	60-7/16	64-3/8	59-1/8	5-1/4	76-3/8	13-9/16	151	42	115-3/16	171-3/16	255-7/8	5-1/4	31-1/2	56-13/16	23-1/2

UNIT INFORMATION

MODEL	BURNER LENGTH	BTU LOW	BTU HIGH	MIN. GAS PRESSURE	MAX. GAS PRESSURE	GAS CONNECTION	MIN. TONNAGE RANGE	MAX. TONNAGE RANGE	MIN. FILTER SIZE & QTY	MAX. FILTER VELOCITY
D250-610	6"	18	275	7" VC	14" VC	3/4"	3 Ton	12.5 Ton	20"x25"x2" (3)	8300 CFH = 348 FPM
D300-610	12"	18	550	7" VC	14" VC	3/4"	3 Ton	12.5 Ton	20"x25"x2" (3)	8300 CFH = 348 FPM
D350-610	12"	18	550	7" VC	14" VC	3/4"	3 Ton	12.5 Ton	20"x25"x2" (3)	8300 CFH = 348 FPM
D400-610	18"	18	825	7" VC	14" VC	1"	5 Ton	20 Ton	16"x20"x2" (8)	6500 CFH = 428 FPM
D450-610	18"	18	825	7" VC	14" VC	1"	5 Ton	20 Ton	16"x20"x2" (8)	6500 CFH = 428 FPM
D500-610	24"	18	1100	7" VC	14" VC	1"	10 Ton	25 Ton	20"x25"x2" (8)	8800 CFH = 348 FPM
D550-610	24"	18	1100	7" VC	14" VC	1"	10 Ton	25 Ton	20"x25"x2" (8)	8800 CFH = 348 FPM
D600-610	30"	45.8	1375	7" VC	5 PSI	1-1/4"	20 Ton	40 Ton	16"x20"x2" (15)	81300 CFH = 495 FPM
D650-610	30"	45.8	1375	7" VC	5 PSI	1-1/4"	20 Ton	40 Ton	16"x20"x2" (15)	81300 CFH = 495 FPM



Direct Fired Profile Plate Specifications:

Application: Spring-loaded burner profile plates are engineered to automatically react to the momentum of a fresh air stream, without the need for any motors or actuators to mechanically adjust them. With this feature, all DF units are designed for demand control ventilation (DCV) requirements.

General Construction: Profile plates are formed from G90 galvanized steel. Profile plates shall vary in size per unit. Profile plates shall be mounted along the same plane as the discharge of the burner. Design shall incorporate properly torqued, permanently mounted spring hinges.

Direct Fired (DF) Profile Plate Assembly