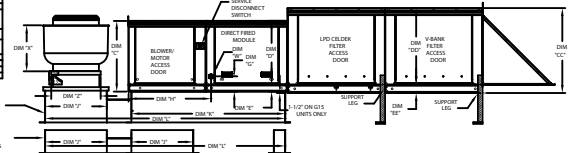


MODEL	W	D	H
0204-01	1612	2418	21
0204-02	1612	2418	21
0204-03	20	1618	24-24
0204-04	1612	2418	21
0204-05	1612	2418	21
0204-06	1612	2418	21
0204-07	1612	2418	21
0204-08	1612	2418	21

30 INCH HIGH EQUIPMENT CURB
 * 9 INCH HIGH EXHAUST ADAPTER MAY BE REQUIRED
 CURB/RAIL COMBINATION USED ON UNITS WITH 20" AND 25" BLOWERS



ALL DIMENSIONS ARE UNLESS INDICATED OTHERWISE

MODEL	DIM 10"					DIM 11"					DIM 12"					DIM 13"					DIM 14"					DIM 15"					DIM 16"				
	W	D	H	W	D	W	D	H	W	D	W	D	H	W	D	W	D	H	W	D	W	D	H	W	D	W	D	H	W	D					
0204-01	1612	2418	21	1612	2418	1612	2418	21	1612	2418	1612	2418	21	1612	2418	1612	2418	21	1612	2418	1612	2418	21	1612	2418	1612	2418	21	1612	2418					
0204-02	1612	2418	21	1612	2418	1612	2418	21	1612	2418	1612	2418	21	1612	2418	1612	2418	21	1612	2418	1612	2418	21	1612	2418	1612	2418	21	1612	2418					
0204-03	20	1618	24-24	20	1618	20	1618	24-24	20	1618	20	1618	24-24	20	1618	20	1618	24-24	20	1618	20	1618	24-24	20	1618	20	1618	24-24	20	1618					



Direct Fired (DF) Profile Plate Assembly

MODEL	BLOWER LENGTH	BLOWER W	BLOWER H	UNITS PER HOUR				UNITS PER HOUR				UNITS PER HOUR						
				60	70	80	90	60	70	80	90	60	70	80	90			
0204-01	1612	2418	21	1612	2418	21	1612	2418	21	1612	2418	21	1612	2418	21	1612	2418	21
0204-02	1612	2418	21	1612	2418	21	1612	2418	21	1612	2418	21	1612	2418	21	1612	2418	21
0204-03	20	1618	24-24	20	1618	24-24	20	1618	24-24	20	1618	24-24	20	1618	24-24	20	1618	24-24

Notes:
 Blower frame assemblies shall have patent (US Patent No. 4,844,252) self-aligning profile plates designed to minimize air velocity and pressure drop across the burner. Profile plates shall also function to reduce noise with velocity limiting by product track to a maximum of 160 ft/min (50 m/s) and 0.3 gpm of nitrogen dioxide (NO₂).
Installation:
 Self-aligning burner profile plates are engineered to automatically seal to the maximum of 1 inch at various ambient thermal for any moderate variations to manufacturing adjustment. With the thermal of GF units are designed for reduced ambient heat (AC) requirements.
Construction:
 Self-aligning burner profile plates shall be included in the GF with a 10' being and comply with standard safety standards: ANSI Z35.2 and UL 170 for manufacturing GF heaters, and ANSI Z35.2 for manufacturing GF heaters.
General Construction:
 Profile plates shall be formed from 0.08 galvanized steel.
 Profile plates shall vary in size per unit.
 Profile plates shall be mounted along the same plane as the discharge of the burner.
 Designs shall incorporate properly spaced, permanently mounted support legs.
 Spare parts shall be made from standard stock.

MAX. ROOF OPENING 3" SMALLER THAN CURB OUTSIDE DIMENSION
 **MAX. EVAP WATER PRESSURE = 50 PSI @ 70 DEG. F