

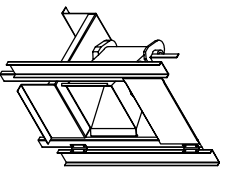
HW-BL-PRECHIBF-SAH  
REV. 05/05/2015

ALL DIMENSIONS ARE NOMINAL AND GIVEN IN INCHES.

MODEL	A	B	BB	C	CC	D	DD	E	EE	F	G	H	J	K	L	N	P	R	S	T	U	V	V	X
D-250-G10	181-1/8	27-3/8	36-3/4	29-3/4	36-3/4	26-1/16	33	3-3/4	3-3/4	53-5/8	7-13/16	34-13/16	21	71	102-7/16	13-1/4	11-1/2	6-3/8	11-7/8	14	8	14	12-1/2	18
D-500-G10	181-1/8	27-3/8	36-3/4	29-3/4	36-3/4	26-1/16	33	3-3/4	3-3/4	53-5/8	7-13/16	34-13/16	21	71	102-7/16	13-1/4	11-1/2	6-3/8	11-7/8	14	8	14	12-1/2	18
D-250-G15	195-1/8	37-3/8	40-3/4	36-3/4	43-3/8	33-1/16	38-1/8	3-3/4	5-1/4	51-5/8	7-13/16	42-13/16	31	79	115-7/16	18-3/4	16	8-5/8	14-1/16	22-3/4	8	11	7-1/2	24
D-500-G15	195-1/8	37-3/8	40-3/4	36-3/4	43-3/8	33-1/16	38-1/8	3-3/4	5-1/4	51-5/8	7-13/16	42-13/16	31	79	115-7/16	18-3/4	16	8-5/8	14-1/16	22-3/4	8	11	7-1/2	24
D-750-G15	195-1/8	37-3/8	40-3/4	36-3/4	43-3/8	33-1/16	38-1/8	3-3/4	5-1/4	51-5/8	7-13/16	42-13/16	31	79	115-7/16	18-3/4	16	8-5/8	14-1/16	22-3/4	8	11	7-1/2	24
D-500-G18	203-1/8	41-3/8	47-7/8	43-3/8	51-3/8	38-1/16	46-1/8	5-1/4	5-1/4	76-3/8	9-1/2	47-13/16	35	84	123-7/16	22	19	9	17-7/8	28	8	7	4-1/2	30
D-750-G18	203-1/8	41-3/8	47-7/8	43-3/8	51-3/8	38-1/16	46-1/8	5-1/4	5-1/4	76-3/8	9-1/2	47-13/16	35	84	123-7/16	22	19	9	17-7/8	28	8	7	4-1/2	30
D-1000-G18	203-1/8	41-3/8	47-7/8	43-3/8	51-3/8	38-1/16	46-1/8	5-1/4	5-1/4	76-3/8	9-1/2	47-13/16	35	84	123-7/16	22	19	9	17-7/8	28	8	7	4-1/2	30
D-1000-G20	243-9/16	48-1/8	58-5/8	51-3/8	58-3/8	46-1/8	53-1/8	5-1/4	5-1/4	71-3/8	13-9/16	66-5/16	42	115-3/16	163-3/16	24-7/8	24-7/8	11-1/16	19	33	10	11	8	36
D-1500-G20	243-9/16	48-1/8	58-5/8	51-3/8	58-3/8	46-1/8	53-1/8	5-1/4	5-1/4	71-3/8	13-9/16	66-5/16	42	115-3/16	163-3/16	24-7/8	24-7/8	11-1/16	19	33	10	11	8	36
D-2000-G25	283-9/16	59-3/16	74-7/8	58-3/8	58-3/8	53-1/8	53-1/8	5-1/4	5-1/4	71-3/8	13-3/4	76-7/16	52-3/4	125-3/16	179-15/16	31-3/8	31-3/8	13-3/16	21-1/4	43	10	10	6-1/2	43
D-2500-G25	283-9/16	59-3/16	74-7/8	58-3/8	58-3/8	53-1/8	53-1/8	5-1/4	5-1/4	71-3/8	13-3/4	76-7/16	52-3/4	125-3/16	179-15/16	31-3/8	31-3/8	13-3/16	21-1/4	43	10	10	6-1/2	43

MODEL	BURNER BTU RANGE (MBH)	GAS PRESSURE	GAS CONNECTION	TOT. WEIGHT	CELDEK EVAPORATIVE COOLING UNIT	V-BANK FILTER	WATER INLET	DRAIN OPENING	OPTIONAL MIXING BOX FILTERS															
D-250-G10	6"	18	275	7"	14" WC	3/4	1080 LBS	25" x 32" x 12"	20	6.5 GPH	4-1/2	38-1/2	18	48-1/4	20" x 25" x 2" (8)	10" x 16" x 2" (5)	15" x 20" x 2" (4)	15" x 15" x 2" (2)	15" x 20" x 2" (4)	15" x 15" x 2" (2)	15" x 20" x 2" (4)	15" x 15" x 2" (2)	15" x 20" x 2" (4)	15" x 15" x 2" (2)
D-500-G10	12"	18	550	7"	14" WC	3/4	1085 LBS	25" x 32" x 12"	20	6.5 GPH	4-1/2	38-1/2	18	48-1/4	20" x 25" x 2" (8)	10" x 16" x 2" (5)	15" x 20" x 2" (4)	15" x 15" x 2" (2)	15" x 20" x 2" (4)	15" x 15" x 2" (2)	15" x 20" x 2" (4)	15" x 15" x 2" (2)	15" x 20" x 2" (4)	15" x 15" x 2" (2)
D-250-G15	6"	18	275	7"	14" WC	3/4	1085 LBS	25" x 32" x 12"	20	6.5 GPH	4-1/2	38-1/2	18	48-1/4	20" x 25" x 2" (8)	10" x 16" x 2" (5)	15" x 20" x 2" (4)	15" x 15" x 2" (2)	15" x 20" x 2" (4)	15" x 15" x 2" (2)	15" x 20" x 2" (4)	15" x 15" x 2" (2)	15" x 20" x 2" (4)	15" x 15" x 2" (2)
D-500-G15	12"	18	550	7"	14" WC	3/4	1085 LBS	25" x 32" x 12"	20	6.5 GPH	4-1/2	38-1/2	18	48-1/4	20" x 25" x 2" (8)	10" x 16" x 2" (5)	15" x 20" x 2" (4)	15" x 15" x 2" (2)	15" x 20" x 2" (4)	15" x 15" x 2" (2)	15" x 20" x 2" (4)	15" x 15" x 2" (2)	15" x 20" x 2" (4)	15" x 15" x 2" (2)
D-750-G15	18"	27.5	825	7"	14" WC	1	1485 LBS	30" x 36" x 12"	28	8.4 GPH	4-1/2	44	20	57-1/4	20" x 25" x 2" (8)	10" x 16" x 2" (5)	15" x 20" x 2" (4)	15" x 15" x 2" (2)	15" x 20" x 2" (4)	15" x 15" x 2" (2)	15" x 20" x 2" (4)	15" x 15" x 2" (2)	15" x 20" x 2" (4)	15" x 15" x 2" (2)
D-500-G18	12"	18	550	7"	14" WC	1	1905 LBS	38" x 43" x 12"	35	10.15 GPH	4-1/2	44	20	57-1/4	20" x 25" x 2" (8)	10" x 16" x 2" (5)	15" x 20" x 2" (4)	15" x 15" x 2" (2)	15" x 20" x 2" (4)	15" x 15" x 2" (2)	15" x 20" x 2" (4)	15" x 15" x 2" (2)	15" x 20" x 2" (4)	15" x 15" x 2" (2)
D-750-G18	18"	27.5	825	7"	14" WC	1	1910 LBS	38" x 43" x 12"	35	10.15 GPH	4-1/2	44	20	57-1/4	20" x 25" x 2" (8)	10" x 16" x 2" (5)	15" x 20" x 2" (4)	15" x 15" x 2" (2)	15" x 20" x 2" (4)	15" x 15" x 2" (2)	15" x 20" x 2" (4)	15" x 15" x 2" (2)	15" x 20" x 2" (4)	15" x 15" x 2" (2)
D-1000-G18	24"	36.6	1100	7"	14" WC	1	1915 LBS	38" x 43" x 12"	35	10.15 GPH	4-1/2	44	20	57-1/4	20" x 25" x 2" (8)	10" x 16" x 2" (5)	15" x 20" x 2" (4)	15" x 15" x 2" (2)	15" x 20" x 2" (4)	15" x 15" x 2" (2)	15" x 20" x 2" (4)	15" x 15" x 2" (2)	15" x 20" x 2" (4)	15" x 15" x 2" (2)
D-1000-G20	24"	36.6	1100	7"	14" WC	1	1915 LBS	38" x 43" x 12"	35	10.15 GPH	4-1/2	44	20	57-1/4	20" x 25" x 2" (8)	10" x 16" x 2" (5)	15" x 20" x 2" (4)	15" x 15" x 2" (2)	15" x 20" x 2" (4)	15" x 15" x 2" (2)	15" x 20" x 2" (4)	15" x 15" x 2" (2)	15" x 20" x 2" (4)	15" x 15" x 2" (2)
D-1500-G20	30"	45.8	1375	7"	14" WC	1	2180 LBS	45" x 54" x 12"	42	12.6 GPH	4-1/2	44	20	57-1/4	20" x 25" x 2" (8)	10" x 16" x 2" (5)	15" x 20" x 2" (4)	15" x 15" x 2" (2)	15" x 20" x 2" (4)	15" x 15" x 2" (2)	15" x 20" x 2" (4)	15" x 15" x 2" (2)	15" x 20" x 2" (4)	15" x 15" x 2" (2)
D-2000-G25	48"	73.3	2200	7"	14" WC	1	3530 LBS	45" x 54" x 12"	57	20.1 GPH	4-1/2	44	20	57-1/4	20" x 25" x 2" (8)	10" x 16" x 2" (5)	15" x 20" x 2" (4)	15" x 15" x 2" (2)	15" x 20" x 2" (4)	15" x 15" x 2" (2)	15" x 20" x 2" (4)	15" x 15" x 2" (2)	15" x 20" x 2" (4)	15" x 15" x 2" (2)
D-2500-G25	60"	91.6	2750	7"	14" WC	1	3545 LBS	45" x 54" x 12"	57	20.1 GPH	4-1/2	44	20	57-1/4	20" x 25" x 2" (8)	10" x 16" x 2" (5)	15" x 20" x 2" (4)	15" x 15" x 2" (2)	15" x 20" x 2" (4)	15" x 15" x 2" (2)	15" x 20" x 2" (4)	15" x 15" x 2" (2)	15" x 20" x 2" (4)	15" x 15" x 2" (2)

General Construction: Profile plates shall vary in size per unit. Profile plates shall be mounted along the same plane as the discharge of the burner. Design shall incorporate proper torque, permanently mounted spring hinges.



Direct Fired (DF) Profile Plate Assembly