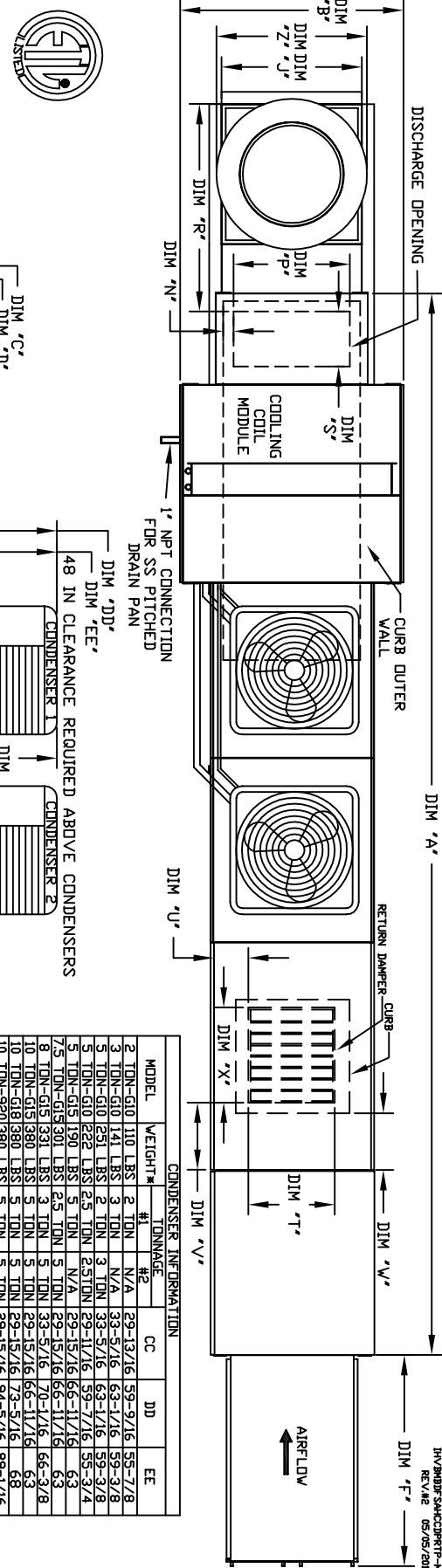


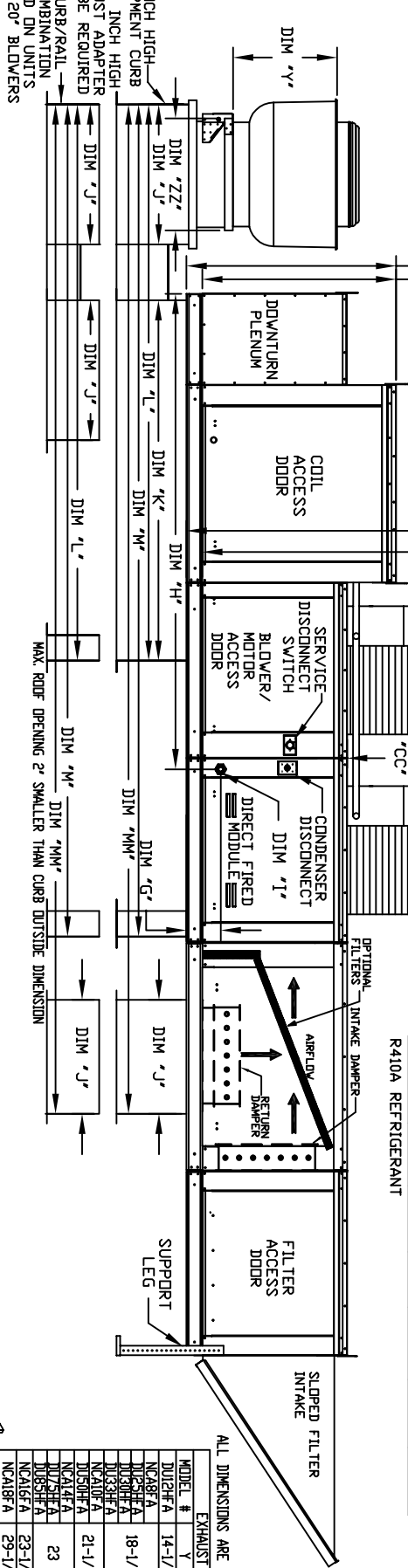
MODULAR OUTDOOR DOWN DISCHARGE DIRECT FIRED RECIRCULATING HEATER—ROOF TOP PACKAGE WITH COOLING, V-BANK AND INTAKE HOOD

JHV9MBS54ACC0PRTT-HEU
REV. 05/05/2015



R-410A REFRIGERANT

MODEL	WEIGHT#	TONNAGE	CC	JD	EE
2 TON-G10	110 LBS	2 TON	N/A	29-13/16	59-9/16
3 TON-G10	141 LBS	3 TON	N/A	33-5/16	63-1/16
5 TON-G10	225 LBS	5 TON	N/A	33-5/16	63-1/16
5 TON-G10	225 LBS	2.5 TON	N/A	29-11/16	59-7/16
5 TON-G15	190 LBS	5 TON	N/A	29-15/16	66-11/16
7.5 TON-G15	301 LBS	7.5 TON	N/A	33-5/16	70-1/16
8 TON-G15	331 LBS	8 TON	N/A	33-5/16	70-1/16
10 TON-G15	380 LBS	10 TON	N/A	33-5/16	73-5/16
10 TON-G18	380 LBS	10 TON	N/A	29-15/16	65-11/16
10 TON-G20	380 LBS	10 TON	N/A	29-15/16	65-11/16
10 TON-G20	380 LBS	5 TON	N/A	29-15/16	94-5/16
10 TON-G20	380 LBS	5 TON	N/A	29-15/16	89-1/16



ALL DIMENSIONS ARE NOMINAL AND GIVEN IN INCHES

MODEL #	EXHAUST UNIT DIMENSIONS	ZZ **
D102HFA	14-1/2	19
NCABFA	22	19
D103HFA	18-1/2	21
D103SHFA	27-1/4	21
NC40FA	21-1/2	21
NC41FA	33-3/4	24-3/4
D105SHFA	23	28
NC45FA	23-1/2	39-3/8
NC46FA	29-1/2	38-7/8
NC42FA	30-5/8	43-3/8
NC43FA	33-1/2	33
NC43FA	33-1/2	40

MODEL	WEIGHT	A	B	C	D	E	F	G	H	J	K	L	M	N	P	R	S	T	U	V	X	
D250-G10	1280 LBS	209-1/2	39-3/8	42-3/4	39	3-3/4	44-3/8	7-13/16	95-7/16	21	71	106	166-5/8	198-1/16	3-9/16	13-7/8	36-3/16	11-1/2	14	8	14	
D250-G10	1285 LBS	209-1/2	39-3/8	42-3/4	39	3-3/4	44-3/8	7-13/16	95-7/16	21	71	106	166-5/8	198-1/16	3-9/16	13-7/8	36-3/16	11-1/2	14	8	14	
D250-G15	1740 LBS	223-1/2	49-3/8	47-3/4	44	3-3/4	53-3/8	7-13/16	109-7/16	31	79	124	190-5/8	227-1/16	4-5/16	22-3/8	46-9/16	18	11	7-1/2	24	
D250-G15	1745 LBS	223-1/2	49-3/8	47-3/4	44	3-3/4	53-3/8	7-13/16	109-7/16	31	79	124	190-5/8	227-1/16	4-5/16	22-3/8	46-9/16	18	11	7-1/2	24	
D250-G18	2060 LBS	234-1/2	54-3/8	56-3/8	51-1/8	5-1/4	51-5/8	9-1/2	114-7/16	35	84	133	199-5/8	239-1/16	6-5/16	22-3/8	49-1/2	18	8	7	4-1/2	30
D250-G18	2065 LBS	234-1/2	54-3/8	56-3/8	51-1/8	5-1/4	51-5/8	9-1/2	114-7/16	35	84	133	199-5/8	239-1/16	6-5/16	22-3/8	49-1/2	18	8	7	4-1/2	30
D1000-G20	3315 LBS	292-1/2	64-3/8	64-3/8	59-1/8	5-1/4	51-5/8	9-1/2	114-7/16	35	84	133	199-5/8	239-1/16	6-5/16	22-3/8	49-1/2	18	8	7	4-1/2	30
D1500-G20	3330 LBS	292-1/2	64-3/8	64-3/8	59-1/8	5-1/4	76-3/8	13-9/16	151	42	115-3/16	171-3/16	255-7/8	303-7/8	5-1/4	31-1/2	56-3/16	23-1/2	33	10	11	36

MODEL	BURNER LENGTH	BTU RANGE (QBH)		GAS PRESSURE (GAS CONNECTION)		TONNAGE RANGE		FILTERS	
		MIN	MAX	MIN	MAX	MIN	MAX	MIN	MAX
D250-G10	12"	18	275	1/4" WC	3/4"	2 ton	5 ton	20"x25"x2" (3)	8000 CFM = 348 FPM
D250-G10	12"	18	550	1/4" WC	3/4"	2 ton	5 ton	20"x25"x2" (3)	8300 CFM = 348 FPM
D250-G15	6"	18	275	1/4" WC	3/4"	5 ton	10 ton	16"x20"x2" (8)	8000 CFM = 428 FPM
D250-G15	12"	18	550	1/4" WC	3/4"	5 ton	10 ton	16"x20"x2" (8)	8400 CFM = 428 FPM
D250-G18	12"	18	825	1/4" WC	1"	5 ton	10 ton	20"x25"x2" (8)	8000 CFM = 348 FPM
D250-G18	12"	18	825	1/4" WC	1"	5 ton	10 ton	20"x25"x2" (8)	8000 CFM = 348 FPM
D1000-G18	24"	36	366	1/4" WC	1 1/4"	10 ton	10 ton	16"x20"x2" (4)	8100 CFM = 348 FPM
D1500-G20	36"	43.8	1375	5 PSI	1-1/4"	10 ton	10 ton	16"x20"x2" (4)	8100 CFM = 348 FPM
D1500-G20	36"	43.8	1375	3 PSI	1-1/4"	10 ton	10 ton	16"x20"x2" (4)	8100 CFM = 348 FPM

OPTIONAL MIXING BOX FILTERS

FILTER SIZE & QTY
10"x16"x2" (5)
10"x16"x2" (3)
20"x25"x2" (2)
16"x25"x2" (1)
20"x25"x2" (2)
16"x25"x2" (1)
15"x20"x2" (4)
15"x15"x2" (2)
18"x25"x2" (4)
16"x20"x2" (2)
18"x25"x2" (4)
16"x20"x2" (2)

Direct Fired Profile Plate Specifications

Direct fired burners shall have patented US Patent No. US6699232B2 self-cleaning profile plates designed to ensure proper air velocity and pressure drop across the burner. Profile plates shall allow barriers to achieve clean combustion by limiting by-product levels to a maximum of 50ppm of carbon monoxide (CO), and 0.5ppm of nitrogen dioxide (NO2).

Application: Spring-loaded burner profile plates are engineered to automatically react to the momentum of the burner flame and maintain a consistent air-to-fuel ratio. The profile plates are designed to meet the requirements of the ASHRAE 90.1-2013 energy code. The profile plates are designed for demand control ventilation (DCV) applications.

With this feature, all JP units are designed for demand control ventilation (DCV) applications. All JP units are designed for demand control ventilation (DCV) applications. All JP units are designed for demand control ventilation (DCV) applications.

General Construction:

- Profile plates shall be formed from G90 galvanized steel.
- Profile plates shall be mounted along the same plane as the discharge of the burner.
- Profile plates shall be permanently mounted using spring fingers.
- Spring fingers shall be made from plated steel.

Direct Fired (DF) Profile Plate Assembly