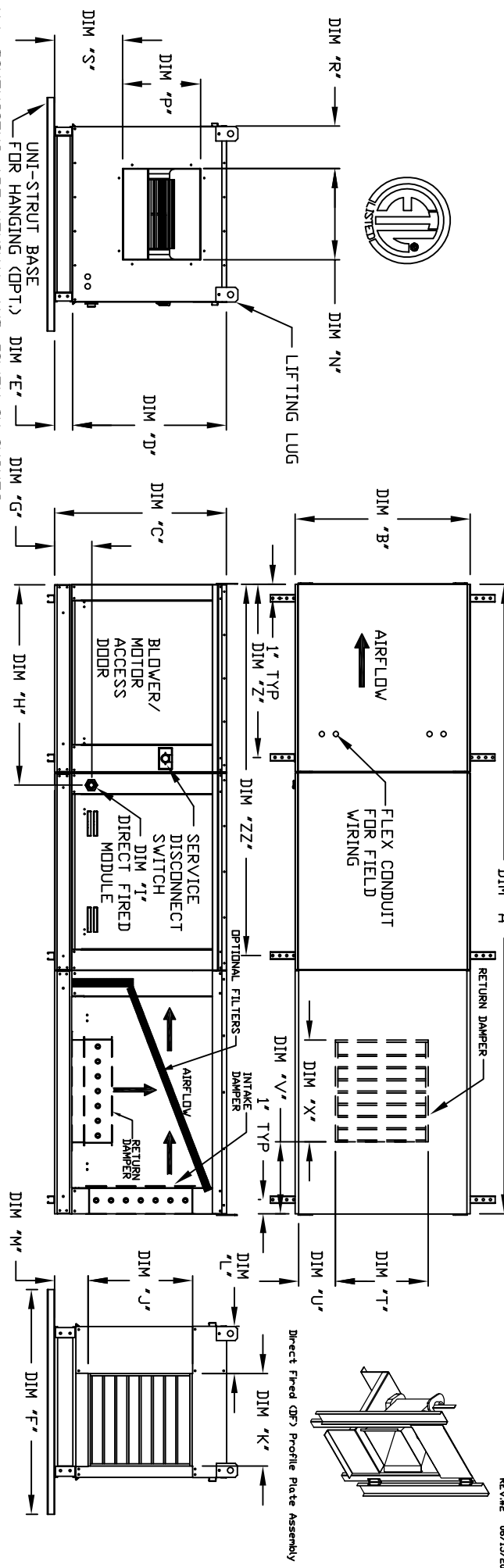


MODULAR INDOOR INLINE DIRECT FIRED RECIRCULATING HEATER

HD0534H  
REV.02 06/15/2015



ALL DIMENSIONS ARE NOMINAL AND GIVEN IN INCHES.

MODEL	WEIGHT	A	B	C	D	E	F	G	H	J	K	L	M	N	P	R	S	T	U	V	X	Z	ZZ	
D.250-G10	705 LBS	116-5/8	27-3/8	29-3/4	26-1/16	3-3/4	36	7-13/16	34-13/16	18	16	8	5-3/4	13-1/4	11-1/4	6-3/8	11-7/8	14	8	14	18	31-1/8	73-1/4	
D.500-G10	710 LBS	116-5/8	27-3/8	29-3/4	26-1/16	3-3/4	36	7-13/16	34-13/16	18	16	8	5-3/4	13-1/4	11-1/2	6-3/8	11-7/8	14	8	14	18	31-1/8	73-1/4	
D.250-G15	990 LBS	124-5/8	37-3/8	36-3/4	33-1/16	3-3/4	48	7-13/16	42-13/16	24	22-3/4	8	5-3/4	18-3/4	16	8-5/8	14-1/16	22-3/4	8	11	24	39-1/8	81-1/4	
D.500-G15	995 LBS	124-5/8	37-3/8	36-3/4	33-1/16	3-3/4	48	7-13/16	42-13/16	24	22-3/4	8	5-3/4	18-3/4	16	8-5/8	14-1/16	22-3/4	8	11	24	39-1/8	81-1/4	
D.750-G15	1000 LBS	124-5/8	37-3/8	36-3/4	33-1/16	3-3/4	48	7-13/16	42-13/16	24	22-3/4	8	5-3/4	18-3/4	16	8-5/8	14-1/16	22-3/4	8	11	24	39-1/8	81-1/4	
D.500-G18	1160 LBS	129-5/8	41-3/8	43-3/8	38-1/16	5-1/4	60	9-1/2	47-13/16	30	30	8	7-1/2	22	19	9	17-7/8	28	8	7	30	44-1/8	86-1/4	
D.750-G18	1165 LBS	129-5/8	41-3/8	43-3/8	38-1/16	5-1/4	60	9-1/2	47-13/16	30	30	8	7-1/2	22	19	9	17-7/8	28	8	7	30	44-1/8	86-1/4	
D.1000-G18	1170 LBS	129-5/8	41-3/8	43-3/8	38-1/16	5-1/4	60	9-1/2	47-13/16	30	30	8	7-1/2	22	19	9	17-7/8	28	8	7	30	44-1/8	86-1/4	
D.1000-G20	1900 LBS	172-13/16	48-7/16	51-3/8	46-1/8	5-1/4	60	13-9/16	66-5/16	36	34	10	7-1/2	24-7/8	24-7/8	11-1/16	19-1/8	33	10	11	36	63-3/16	117-3/8	
D.1500-G20	1915 LBS	172-13/16	48-7/16	51-3/8	46-1/8	5-1/4	60	13-9/16	66-5/16	36	34	10	7-1/2	24-7/8	24-7/8	11-1/16	19-1/8	33	10	11	36	63-3/16	117-3/8	
D.2000-G25	2510 LBS	182-13/16	59-3/16	58-3/8	53-1/8	5-1/4	72	13-3/4	76-7/16	43	43	10	7-1/2	31-3/8	31-3/8	13-3/16	21-9/16	43	10	10	6-1/2	43	73-3/16	127-3/8
D.2500-G25	2525 LBS	182-13/16	59-3/16	58-3/8	53-1/8	5-1/4	72	13-3/4	76-7/16	43	43	10	7-1/2	31-3/8	31-3/8	13-3/16	21-9/16	43	10	10	6-1/2	43	73-3/16	127-3/8

MODEL	BTU RANGE (MBH)			GAS PRESSURE		GAS CONNECTION		OPTIONAL MIXING BOX FILTERS													
	BURNER LENGTH	BTU LOW	BTU HIGH	MIN	MAX			FILTER SIZE & QTY													
D.250-G10	6'	18	275	7" WC	14" WC		3/4	10"x16"x2" (5)													
D.500-G10	12'	18	550	7" WC	14" WC		3/4	10"x16"x2" (5)													
D.250-G15	6'	18	275	7" WC	14" WC		1	20"x25"x2" (2), 16"x25"x2" (1)													
D.500-G15	12'	18	550	7" WC	14" WC		1	20"x25"x2" (2), 16"x25"x2" (1)													
D.750-G15	18'	18	825	7" WC	14" WC		1	20"x25"x2" (2), 16"x25"x2" (1)													
D.500-G18	12'	18	550	7" WC	14" WC		1	15"x20"x2" (4), 15"x15"x2" (2)													
D.750-G18	18'	18	825	7" WC	14" WC		1	15"x20"x2" (4), 15"x15"x2" (2)													
D.1000-G18	24'	18	1100	7" WC	14" WC		1	15"x20"x2" (4), 15"x15"x2" (2)													
D.1500-G20	30'	18	1375	7" WC	5 PSI		1-1/4	18"x25"x2" (4), 16"x20"x2" (2)													
D.2000-G25	48'	18	2200	7" WC	5 PSI		1-1/2	14.5"x19"x2" (12)													
D.2500-G25	64'	18	2750	7" WC	5 PSI		1-1/2	14.5"x19"x2" (12)													

**Direct Fired Profile Plate Specifications:**

Description: Direct fired burners shall have patented US Patent No. US6699238B1, self-adjusting profile plates designed to ensure proper air velocity and pressure drop across the burner. Profile plates shall allow burners to achieve clean combustion by limiting by-product levels to a maximum of 50ppm of carbon monoxide (CO) and 0.5ppm of nitrogen dioxide (NO2).

Applications: Spring-loaded burner profile plates are engineered to automatically react to the momentum of a fresh air stream, without the need for any motors or actuators to mechanically adjust the position of the profile plates. All DF units are designed for demand control ventilation (DCV) requirements.

General Construction: Profile plates shall be formed from G90 galvanized steel. Profile plates shall vary in size per unit. Profile plates shall be permanently mounted on the burner. Profile plates shall incorporate permanently mounted spring hinges. Spring hinges shall be made from plated steel.