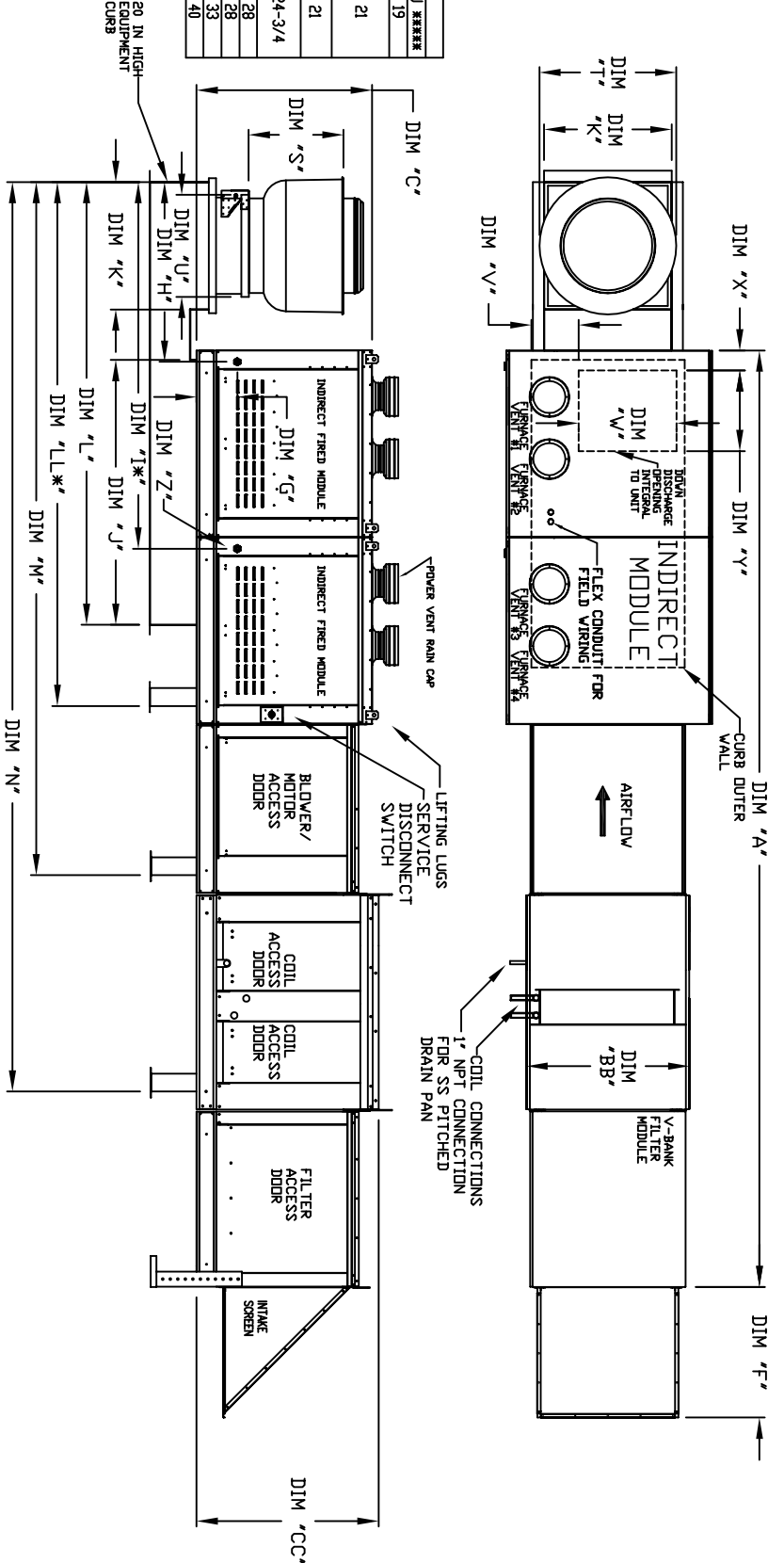




MODEL #	S	T	U
BDU12	14-1/2	22	19
BDU13	18-1/2	27-1/4	21
BDU14	21-1/2	30-1/4	21
BDU15	23-1/2	33-3/4	24-3/4
BDU16	29-1/2	38-7/8	28
BDU17	30-5/8	43-3/8	33
BDU18	33-1/2	52-3/4	40



MAX. ROOF OPENING 2" SMALLER THAN CURB OUTSIDE DIMENSION

ALL DIMENSIONS ARE NOMINAL AND GIVEN IN INCHES.

MODEL	UNIT DIMENSIONS											# OF FURNACES													
	WEIGHT (LBS)	A	B	BB	C	CC	D	E	F	G	H		I	J	K	L	LL	M	N	V	W	X	Y	Z	(NPT)
1-BT150-610	1277	166-3/4	49-1/2	39-3/8	39-9/16	42-3/4	35-13/16	3-3/4	22-3/8	8-3/4	36-1/8	N/A	71	21	106	N/A	124-3/16	166-7/16	3	16-3/4	13-1/8	21	3/4	3/4	1
1-BT180-610	1332	166-3/4	49-1/2	39-3/8	39-9/16	42-3/4	35-13/16	3-3/4	22-3/8	8-3/4	36-1/8	N/A	71	21	106	N/A	124-3/16	166-7/16	3	16-3/4	13-1/8	21	3/4	3/4	1
1-BT180-610-150-G10	1406	166-3/4	49-1/2	39-3/8	39-9/16	42-3/4	35-13/16	3-3/4	22-3/8	8-3/4	36-1/8	N/A	71	21	106	N/A	124-3/16	166-7/16	3	16-3/4	13-1/8	21	3/4	3/4	1
1-BT180-610-200-G10	1560	174-3/4	49-1/2	49-3/8	39-9/16	47-3/4	35-13/16	3-3/4	22-3/8	8-3/4	46-1/8	N/A	79	31	124	N/A	142-3/16	184-7/16	5	24	3-1/8	21	3/4	3/4	1
2-BT180-610	1652	174-3/4	49-1/2	49-3/8	39-9/16	47-3/4	35-13/16	3-3/4	22-3/8	8-3/4	46-1/8	N/A	79	31	124	N/A	142-3/16	184-7/16	5	24	3-1/8	21	3/4	3/4	1
2-BT180-610-G15	1619	174-3/4	49-1/2	49-3/8	39-9/16	47-3/4	35-13/16	3-3/4	22-3/8	8-3/4	46-1/8	N/A	79	31	124	N/A	142-3/16	184-7/16	5	24	3-1/8	21	3/4	3/4	1
2-BT180-610-200-G15	1773	174-3/4	49-1/2	49-3/8	39-9/16	47-3/4	35-13/16	3-3/4	22-3/8	8-3/4	46-1/8	N/A	79	31	124	N/A	142-3/16	184-7/16	5	24	3-1/8	21	3/4	3/4	1
2-BT180-610-400-G15	1866	174-3/4	49-1/2	49-3/8	39-9/16	47-3/4	35-13/16	3-3/4	22-3/8	8-3/4	46-1/8	N/A	79	31	124	N/A	142-3/16	184-7/16	5	24	3-1/8	21	3/4	3/4	1
3-BT180-610-300-G18	2290	185-3/4	57-3/4	54-3/8	57-1/16	56-3/8	51-13/16	5-1/4	34-3/16	10-3/4	50-1/8	N/A	84	35	133	N/A	151-3/16	193-7/16	6-3/4	26-1/2	4-1/8	26-1/2	1	2	
3-BT180-610-400-G18	2428	185-3/4	57-3/4	54-3/8	57-1/16	56-3/8	51-13/16	5-1/4	34-3/16	10-3/4	50-1/8	N/A	84	35	133	N/A	151-3/16	193-7/16	6-3/4	26-1/2	4-1/8	26-1/2	1	2	
3-BT180-610-300-400-G18	3161	245-7/8	57-3/4	54-3/8	57-1/16	56-3/8	51-13/16	5-1/4	34-3/16	10-3/4	50-1/8	N/A	84	35	133	166-1/16	211-5/16	253-9/16	6-3/4	26-1/2	4-1/8	26-1/2	1	3	
3-BT180-610-400-400-G18	3279	245-7/8	57-3/4	54-3/8	57-1/16	56-3/8	51-13/16	5-1/4	34-3/16	10-3/4	50-1/8	N/A	84	35	133	166-1/16	211-5/16	253-9/16	6-3/4	26-1/2	4-1/8	26-1/2	1	3	

UNIT INFORMATION

MODEL	BURNER INPUT	BTU RANGE (KBTU)	TURNDOWN	COMBUSTION EFFICIENCY	GAS PRESSURE	MIN	MAX
1-BT150-610	130	20	6	80.0%	7" WC	14" WC	14" WC
1-BT180-610	300	20	6	80.0%	7" WC	14" WC	14" WC
1-BT180-610-150-G10	300	20	6	80.0%	7" WC	14" WC	14" WC
1-BT180-610-200-G10	400	26.7	6	80.0%	7" WC	14" WC	14" WC
2-BT180-610	200	16.0	6	80.0%	7" WC	14" WC	14" WC
2-BT180-610-G15	300	24.0	6	80.0%	7" WC	14" WC	14" WC
2-BT180-610-200-G15	400	26.7	6	80.0%	7" WC	14" WC	14" WC
2-BT180-610-400-G15	600	40.0	6	80.0%	7" WC	14" WC	14" WC
2-BT180-610-300-G15	800	53.3	6	80.0%	7" WC	14" WC	14" WC
2-BT180-610-400-G15	600	26.7	6	80.0%	7" WC	14" WC	14" WC
2-BT180-610-400-G18	800	40.0	6	80.0%	7" WC	14" WC	14" WC
2-BT180-610-300-G18	600	26.7	6	80.0%	7" WC	14" WC	14" WC
2-BT180-610-400-G18	800	40.0	6	80.0%	7" WC	14" WC	14" WC
3-BT180-610-300-400-G18	800	40.0	6	80.0%	7" WC	14" WC	14" WC
3-BT180-610-400-400-G18	1000	53.3	6	80.0%	7" WC	14" WC	14" WC
3-BT180-610-400-400-G18	1000	53.3	6	80.0%	7" WC	14" WC	14" WC

* ADDITIONAL RAIL/GAS CONNECTION ONLY FOR UNITS WITH 3 DR 4 FURNACES

** ALL MODELS ARE FULLY ELECTRONICALLY MODULATING

*** COMBUSTION EFFICIENCY OF EVERY UNIT IS 80.0% DIVER THE ENTIRE GAS FIRING RANGE.

**** GAS PRESSURES IN TABLE ARE FOR NATURAL GAS, LP MINIMUM GAS INLET PRESSURE = 11" W.C.

***** 9 INCH EXHAUST ADAPTER MAY BE OBTAINED