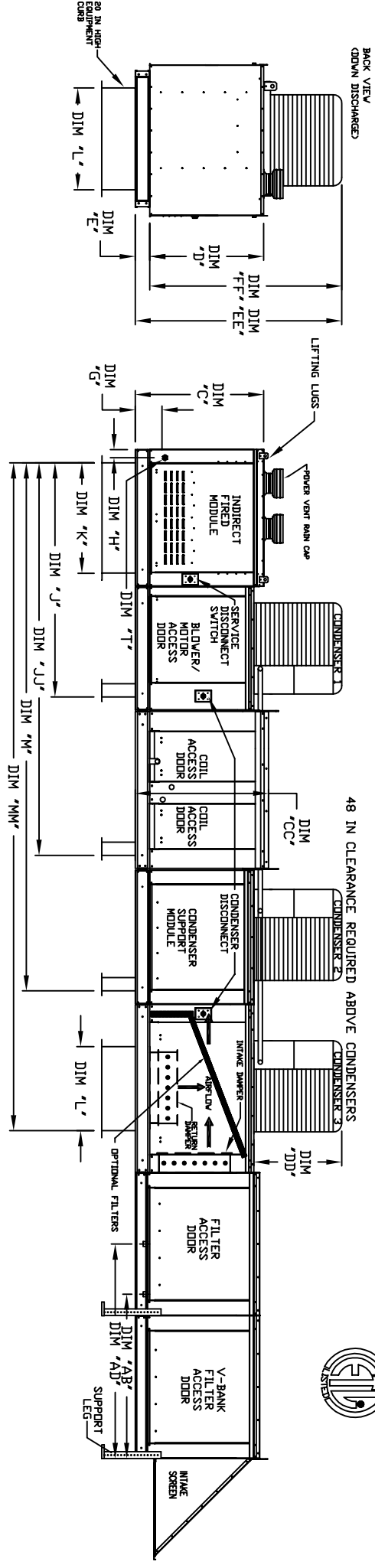
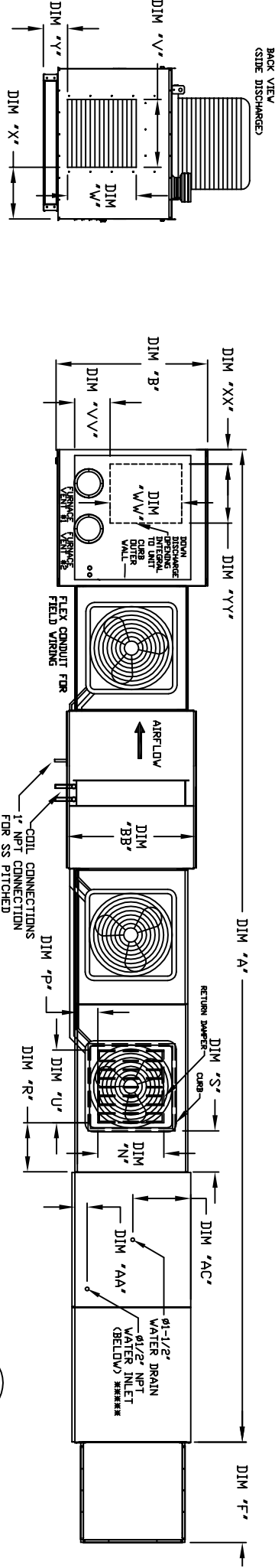


MODULAR OUTDOOR IBT HEATER WITH COOLING COIL, MIXING BOX, LPD EVAPORATIVE COOLER INTAKE, V-BANK AND SCREEN INTAKE

SY/BL/PIC/ACC/SW/HT-49U-13
REV. 01/25/2012



ALL DIMENSIONS ARE NOMINAL AND GIVEN IN INCHES.

UNIT DIMENSIONS

MODEL	A	B	BB	C	CC	D	E	F	G	H	J	K	L	M	N	P	R	S	U	V	X	Y	VV	VV	XX	YY	ZZ	1" OF FURNACES	WATER INLET	BRAIN OPENING
3-IBT-400-G18	302-3/4	57-3/4	54-3/8	57-1/8	56-3/8	51-13/16	5-1/4	47-1/4	10-3/4	2-11/16	102-3/16	84	35	144-7/16	186-11/16	225-13/16	28	8	7	4-1/2	30	27-1/2	31	18-1/2	8-3/4	6-3/4	26-1/2	18-1/2	23-1/2	26-7/8
3-IBT-600-300-300-G18	302-3/4	57-3/4	54-3/8	57-1/8	56-3/8	51-13/16	5-1/4	47-1/4	10-3/4	2-11/16	102-3/16	84	35	144-7/16	186-11/16	225-13/16	28	8	7	4-1/2	30	27-1/2	31	18-1/2	8-3/4	6-3/4	26-1/2	18-1/2	23-1/2	26-7/8
3-IBT-800-400-400-G18	302-3/4	57-3/4	54-3/8	57-1/8	56-3/8	51-13/16	5-1/4	47-1/4	10-3/4	2-11/16	102-3/16	84	35	144-7/16	186-11/16	225-13/16	28	8	7	4-1/2	30	27-1/2	31	18-1/2	8-3/4	6-3/4	26-1/2	18-1/2	23-1/2	26-7/8
4-IBT-400-200	358	57-3/4	50-7/16	57-1/8	54-3/8	51-13/16	5-1/4	49-5/8	10-3/4	2-11/16	121-1/4	42	42	175-9/16	229-7/8	277-9/16	33	10	11	8	36	28-1/2	34	18-1/2	8-3/4	8-1/2	26-1/2	18-1/2	28-7/8	26-7/8
4-IBT-600-400-400-200	358	57-3/4	50-7/16	57-1/8	54-3/8	51-13/16	5-1/4	49-5/8	10-3/4	2-11/16	121-1/4	42	42	175-9/16	229-7/8	277-9/16	33	10	11	8	36	28-1/2	34	18-1/2	8-3/4	8-1/2	26-1/2	18-1/2	28-7/8	26-7/8

UNIT INFORMATION

MODEL	BURNER INPUT BTU	BTU LOW	BTU HIGH	TURNOFF RATIO	COMBUSTION EFFICIENCY	GAS PRESSURE MIN	MAX	TOT. WEIGHT	CEILING EVAPORATIVE COOLING UNIT MEDIA SIZE & QTY	NOZZLES	MAX. FLOW RATE	V-BANK FILTER SIZE & QTY	OPTIONAL MIXING BOX FILTERS
3-IBT-400-G18	400	55.3	320	6	80.0%	7" WC	14" WC	3077 LBS	36"x43"x12"	35	10.5 GPM	16"x26"x2" (13)	16"x26"x2" (13)
3-IBT-600-300-300-G18	600	40	480	12	80.0%	7" WC	14" WC	3195 LBS	36"x43"x12"	35	10.5 GPM	16"x26"x2" (13)	16"x26"x2" (13)
3-IBT-800-400-400-G18	800	55.3	640	12	80.0%	7" WC	14" WC	3333 LBS	36"x43"x12"	35	10.5 GPM	16"x26"x2" (13)	16"x26"x2" (13)
4-IBT-400-200	400	55.3	320	6	80.0%	7" WC	14" WC	4064 LBS	43"x54"x12"	42	12.5 GPM	20"x26"x2" (13)	20"x26"x2" (13)
4-IBT-600-400-400-200	600	55.3	640	12	80.0%	7" WC	14" WC	4947 LBS	43"x54"x12"	42	12.5 GPM	20"x26"x2" (13)	20"x26"x2" (13)

*** COMBUSTION EFFICIENCY IF EVERY UNIT IS 80.0% DIVER THE ENTIRE GAS FIRING RANGE. *** GAS PRESSURES IN TABLE ARE FOR NATURAL GAS, LP MINIMUM GLETT PRESSURE = 11" W.C. *** MAX. EVAP WATER PRESSURE