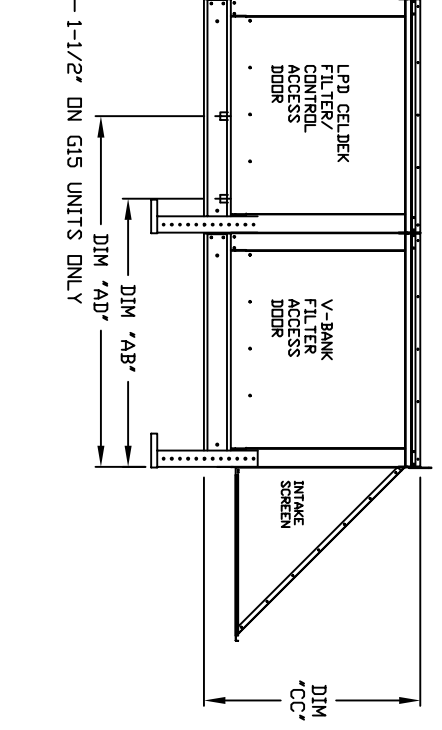
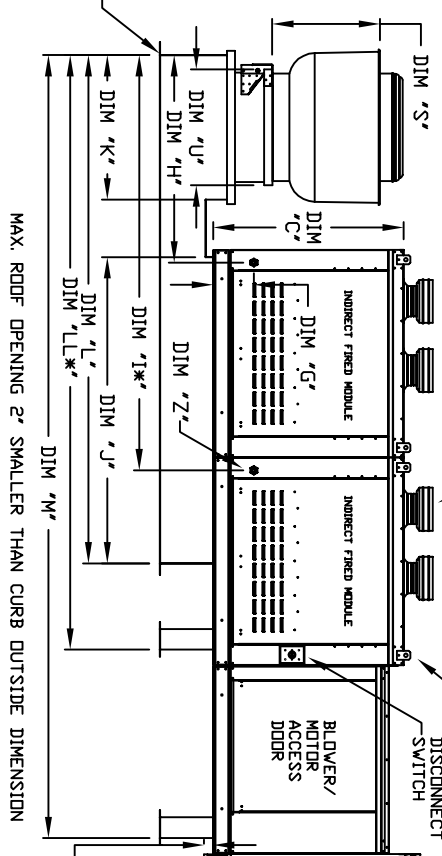


MODEL #	S	L	U	*****
B001	14-1/2	22	19	
B002	18-1/2	27-1/4	21	
B003	21-1/2	30-1/4	21	
B004	23	33-3/4	24-3/4	
B005	23-1/2	39-3/8	28	
B006	30-5/8	43-3/8	33	
B007	33-1/2	52-3/4	40	



ALL DIMENSIONS ARE NOMINAL AND GIVEN IN INCHES.

MAX. ROOF OPENING 2" SMALLER THAN CURB OUTSIDE DIMENSION

MODEL	BTU RANGE (GPH)***		TURNDOWN		COMBUSTION		GAS PRESSURE (W.C.)		CELDEK EVAPORATIVE COOLING UNIT		# OF FURNACES	WATER INLET				# OF WATER TUBES
	MIN	MAX	EFFICIENCY	MAX	MIN	MAX	MIN	MAX	VELOCITY	MAX. GPM		NOZZLES	MAX. FLOW RATE	AA	AB	
1-BT150-G10	150	200	86.7	160	6	800X	7" WC	14" WC	1177 LBS	1080 FPM	80	6.5 GPH	4-1/2	38-1/2	18	48-1/4
1-BT200-G10	200	280	86.7	160	6	800X	7" WC	14" WC	1547 LBS	1080 FPM	80	6.5 GPH	4-1/2	38-1/2	18	48-1/4
1-BT300-150-150-G10	300	400	86.7	240	12	800X	7" WC	14" WC	1202 LBS	1080 FPM	80	6.5 GPH	4-1/2	38-1/2	18	48-1/4
1-BT400-200-200-G10	400	500	86.7	320	12	800X	7" WC	14" WC	1276 LBS	1080 FPM	80	6.5 GPH	4-1/2	38-1/2	18	48-1/4
2-BT1200-G15	200	280	86.7	160	6	800X	7" WC	14" WC	1492 LBS	1067 FPM	80	6.4 GPH	4-1/2	38-1/2	18	48-1/4
2-BT1400-G15	300	400	86.7	240	6	800X	7" WC	14" WC	1571 LBS	1067 FPM	80	6.4 GPH	4-1/2	38-1/2	18	48-1/4
2-BT1600-200-200-G15	400	500	86.7	320	12	800X	7" WC	14" WC	1499 LBS	1067 FPM	80	6.4 GPH	4-1/2	38-1/2	18	48-1/4
2-BT1800-300-300-G15	600	800	86.7	480	12	800X	7" WC	14" WC	1756 LBS	1067 FPM	80	6.4 GPH	4-1/2	38-1/2	18	48-1/4
2-BT2000-400-400-G15	800	1000	86.7	640	12	800X	7" WC	14" WC	2195 LBS	1322 FPM	35	10.5 GPH	4-1/2	41-1/8	23-1/2	52-7/8
3-BT1600-300-300-G18	400	500	86.7	320	12	800X	7" WC	14" WC	1272 LBS	1322 FPM	35	10.5 GPH	4-1/2	41-1/8	23-1/2	52-7/8
3-BT1800-400-400-G18	600	800	86.7	480	12	800X	7" WC	14" WC	1661 LBS	1322 FPM	35	10.5 GPH	4-1/2	41-1/8	23-1/2	52-7/8
3-BT2000-500-500-G18	800	1000	86.7	640	12	800X	7" WC	14" WC	2272 LBS	1322 FPM	35	10.5 GPH	4-1/2	41-1/8	23-1/2	52-7/8
3-BT1200-400-400-G18	239	329	47-7/8	313	18	51-3/8	10-1/4	110-1/4	84	35	133	133	133	133	133	133

UNIT INFORMATION

UNIT INFORMATION

MAX. EVAP. WATER PRESSURE MAY BE REQUIRED

*** ADDITIONAL RAIL/GAS CONNECTION ONLY FOR UNITS WITH 3 OR 4 FURNACES

*** ALL MODELS ARE FULLY ELECTRONICALLY MODULATING

*** COMBUSTION EFFICIENCY OF EVERY UNIT IS 80.0% OVER THE ENTIRE GAS FIRING RANGE.

*** GAS PRESSURES IN TABLE ARE FOR NATURAL GAS. LP MINIMUM GAS INLET PRESSURE = 11" W.C.

*** 9 INCH HIGH EXHAUST ADAPTER MAY BE REQUIRED