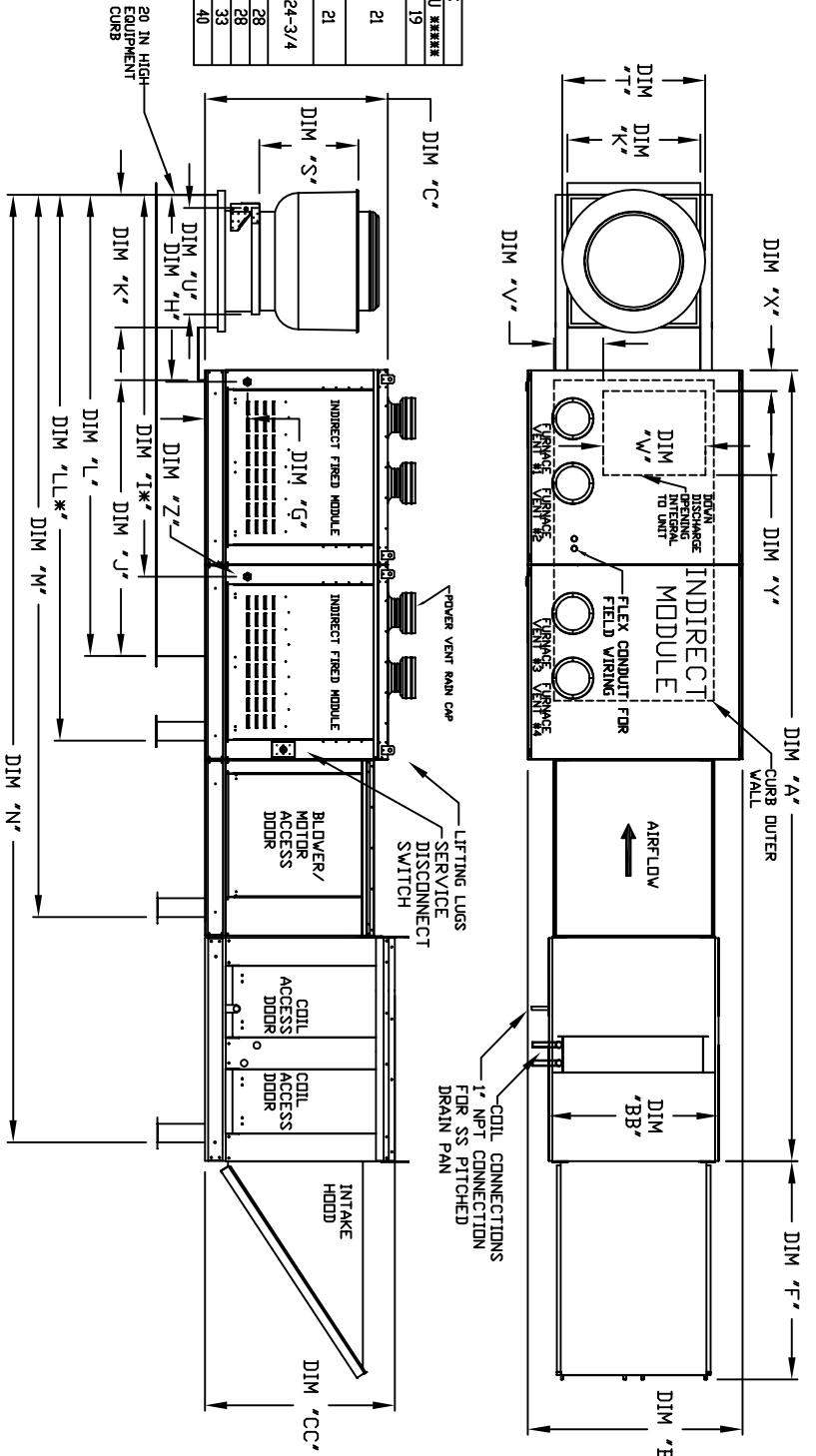




MODEL #	S	T	U
BDU2	14-1/2	22	19
BDU1	18-1/2	27-1/4	21
BDU3	21-1/2	30-1/4	21
BDU4	23-1/2	33-3/4	24-3/4
BDU5	29-1/2	38-7/8	28
BDU6	30-5/8	43-3/8	33
BDU20	33-1/2	52-3/4	40



ALL DIMENSIONS ARE NOMINAL AND GIVEN IN INCHES.

MAX. ROOF OPENING 2" SMALLER THAN CURB OUTSIDE DIMENSION

MODEL	WEIGHT (LBS)	UNIT DIMENSIONS										DOWN DISCHARGE OPENING		GAS CONNECTION	# OF FURNACES											
		A	B	BB	C	CC	D	E	F	G	H	I	J			K	L	LL*	M	N	V	W	X	Y	Z	
1-BT150-G10	11/2	134-1/2	49-1/2	39-3/8	39-3/16	42-3/4	35-13/16	3-3/4	44-3/8	3-1/8	36-1/8	N/A	71	21	21	106	N/A	124-3/16	156-7/16	3	16-3/4	3-1/8	21	3/4	3/4	1
1-BT200-G10	12/8	134-1/2	49-1/2	39-3/8	39-3/16	42-3/4	35-13/16	3-3/4	44-3/8	3-1/8	36-1/8	N/A	71	21	21	106	N/A	124-3/16	156-7/16	3	16-3/4	3-1/8	21	3/4	3/4	1
1-BT300-150-G10	12/8	134-1/2	49-1/2	39-3/8	39-3/16	42-3/4	35-13/16	3-3/4	44-3/8	3-1/8	36-1/8	N/A	71	21	21	106	N/A	124-3/16	156-7/16	3	16-3/4	3-1/8	21	3/4	3/4	1
1-BT400-200-G10	13/1	134-1/2	49-1/2	39-3/8	39-3/16	42-3/4	35-13/16	3-3/4	44-3/8	3-1/8	36-1/8	N/A	71	21	21	106	N/A	124-3/16	156-7/16	3	16-3/4	3-1/8	21	3/4	3/4	1
2-BT200-G15	14/5	142-1/2	49-1/2	49-3/8	47-3/4	47-3/4	50-1/8	3-3/4	53-5/8	3-1/4	46-1/8	N/A	79	31	31	124	N/A	142-3/16	184-7/16	5	24	3-1/8	21	3/4	3/4	2
2-BT300-G15	15/7	142-1/2	49-1/2	49-3/8	47-3/4	47-3/4	50-1/8	3-3/4	53-5/8	3-1/4	46-1/8	N/A	79	31	31	124	N/A	142-3/16	184-7/16	5	24	3-1/8	21	3/4	3/4	2
2-BT400-200-G15	16/6	142-1/2	49-1/2	49-3/8	47-3/4	47-3/4	50-1/8	3-3/4	53-5/8	3-1/4	46-1/8	N/A	79	31	31	124	N/A	142-3/16	184-7/16	5	24	3-1/8	21	3/4	3/4	2
2-BT600-300-G15	16/6	142-1/2	49-1/2	49-3/8	47-3/4	47-3/4	50-1/8	3-3/4	53-5/8	3-1/4	46-1/8	N/A	79	31	31	124	N/A	142-3/16	184-7/16	5	24	3-1/8	21	3/4	3/4	2
2-BT800-400-G15	16/6	142-1/2	49-1/2	49-3/8	47-3/4	47-3/4	50-1/8	3-3/4	53-5/8	3-1/4	46-1/8	N/A	79	31	31	124	N/A	142-3/16	184-7/16	5	24	3-1/8	21	3/4	3/4	2
2-BT1000-500-G15	17/81	142-1/2	49-1/2	49-3/8	47-3/4	47-3/4	50-1/8	3-3/4	53-5/8	3-1/4	46-1/8	N/A	79	31	31	124	N/A	142-3/16	184-7/16	5	24	3-1/8	21	3/4	3/4	2
3-BT600-300-G18	20/7	147-1/2	57-3/4	54-3/8	57-1/16	56-3/8	51-13/16	5-1/4	51-5/8	4-1/8	50-1/8	N/A	84	35	35	133	N/A	151-3/16	193-7/16	5-3/4	24	3-1/8	21	3/4	3/4	2
3-BT800-400-G18	23/8	147-1/2	57-3/4	54-3/8	57-1/16	56-3/8	51-13/16	5-1/4	51-5/8	4-1/8	50-1/8	N/A	84	35	35	133	N/A	151-3/16	193-7/16	5-3/4	24	3-1/8	21	3/4	3/4	2
3-BT1000-500-G18	30/2	147-1/2	57-3/4	54-3/8	57-1/16	56-3/8	51-13/16	5-1/4	51-5/8	4-1/8	50-1/8	N/A	84	35	35	133	N/A	151-3/16	193-7/16	5-3/4	24	3-1/8	21	3/4	3/4	2
3-BT1200-600-G18	31/4	207-5/8	57-3/4	54-3/8	57-1/16	56-3/8	51-13/16	5-1/4	51-5/8	4-1/8	50-1/8	N/A	84	35	35	133	166-1/16	211-5/16	253-9/16	5-3/4	24	3-1/8	21	3/4	3/4	3

UNIT INFORMATION

MODEL	BTU RANGE (AMB)***			TURNDOWN RATIO	COMBUSTION EFFICIENCY****		GAS PRESSURE*****	
	BURNER INPUT	BTU LOW	BTU HIGH		MIN	MAX	MIN	MAX
1-BT150-G10	150	20	120	6	80.0%	7" WC	14" WC	
1-BT200-G10	200	26.7	160	6	80.0%	7" WC	14" WC	
1-BT300-150-G10	300	20	240	12	80.0%	7" WC	14" WC	
1-BT400-200-G10	400	26.7	320	12	80.0%	7" WC	14" WC	
2-BT200-G15	200	26.7	160	6	80.0%	7" WC	14" WC	
2-BT300-G15	300	40	240	6	80.0%	7" WC	14" WC	
2-BT400-200-G15	400	26.7	320	12	80.0%	7" WC	14" WC	
2-BT600-300-G15	600	40	480	12	80.0%	7" WC	14" WC	
2-BT800-400-G15	800	53.3	640	12	80.0%	7" WC	14" WC	
3-BT600-300-G18	600	40	480	12	80.0%	7" WC	14" WC	
3-BT800-400-G18	800	53.3	640	12	80.0%	7" WC	14" WC	
3-BT1000-500-G18	1000	40	800	20	80.0%	7" WC	14" WC	
3-BT1200-600-G18	1200	53.3	960	18	80.0%	7" WC	14" WC	

* ADDITIONAL RAIL/GAS CONNECTION ONLY FOR UNITS WITH 3 OR 4 FURNACES

** ALL MODELS ARE FULLY ELECTRONICALLY MODULATING

*** COMBUSTION EFFICIENCY OF EVERY UNIT IS 80.0% OVER THE ENTIRE GAS FIRING RANGE.

**** GAS PRESSURES IN TABLE ARE FOR NATURAL GAS. LP MINIMUM GAS INLET PRESSURE = 11" W.C.

***** 9 INCH HIGH EXHAUST ADAPTER