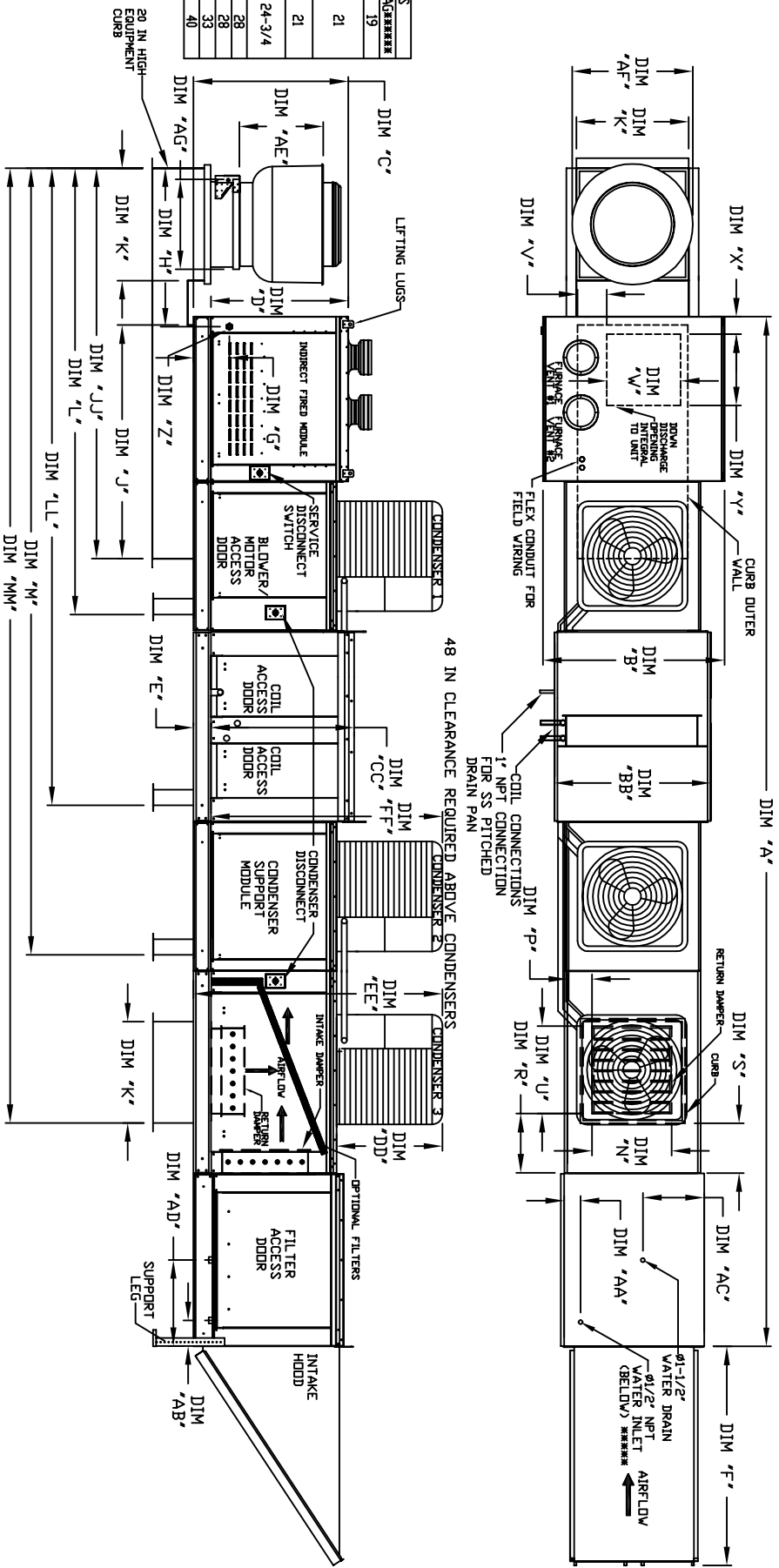




MODEL #	AE	AF	AG
DUA2FA	14-1/2	22	19
NCABFA	18-1/2	27-1/4	21
DUA3FA	21-1/2	30-1/4	21
NCABFA	23	33-3/4	24-3/4
DUA4FA	23-1/2	39-3/8	28
NCABFA	29-1/2	38-7/8	28
NCABFA	30-5/8	43-3/8	33
NCABFA	33-1/2	52-3/4	40



ALL DIMENSIONS ARE NOMINAL AND GIVEN IN INCHES.

MAX. ROOF OPENING 2" SMALLER THAN CURB OUTSIDE DIMENSION

MODEL	UNIT DIMENSIONS													WIRING BOX OPENING																	
	A	B	BB	C	CC	D	E	F	G	H	J	K	JJ	L	LL	M	MM	N	P	R	S	U	V	W	X	Y	Z	AA	AB	AC	AD
3-1BT-400-G18	867-3/8	57-3/4	54-3/8	57-1/16	56-3/8	51-13/16	5-1/4	76-3/8	80-3/4	50-1/8	84	35	133	151-3/16	193-7/16	233-9/16	274-7/8	28	8	7	4-1/2	30	6-3/4	26-1/2	11-7/8	26-1/2	1	4-1/2	5-3/4	23-1/2	17-1/2
3-1BT-600-300-G18	867-3/8	57-3/4	54-3/8	57-1/16	56-3/8	51-13/16	5-1/4	76-3/8	80-3/4	50-1/8	84	35	133	151-3/16	193-7/16	233-9/16	274-7/8	28	8	7	4-1/2	30	6-3/4	26-1/2	11-7/8	26-1/2	1	4-1/2	5-3/4	23-1/2	17-1/2
3-1BT-800-400-G18	867-3/8	57-3/4	54-3/8	57-1/16	56-3/8	51-13/16	5-1/4	76-3/8	80-3/4	50-1/8	84	35	133	151-3/16	193-7/16	233-9/16	274-7/8	28	8	7	4-1/2	30	6-3/4	26-1/2	11-7/8	26-1/2	1	4-1/2	5-3/4	23-1/2	17-1/2

MODEL	BTU RANGE (QBH)***						TURNOVN RATIO		COMBUSTION EFFICIENCY***		GAS PRESSURE***		CEILING EVAPORATIVE COOLING UNIT				
	BTU LOW	BTU HIGH	MIN	MAX	7" VC	14" VC	7" VC	14" VC	7" VC	14" VC	3070 LBS	38"X43"X12"	NOZZLES	MAX. FLOW RATE	1800 GPH	1015 GPH	1015 GPH
3-1BT-400-G18	400	533	40	480	12	12	800%	800%	7" VC	14" VC	3070 LBS	38"X43"X12"	35	35	1015 GPH	1015 GPH	1015 GPH
3-1BT-600-300-G18	600	800	40	480	12	12	800%	800%	7" VC	14" VC	3070 LBS	38"X43"X12"	35	35	1015 GPH	1015 GPH	1015 GPH
3-1BT-800-400-G18	800	533	640	640	12	12	800%	800%	7" VC	14" VC	3070 LBS	38"X43"X12"	35	35	1015 GPH	1015 GPH	1015 GPH

MODEL	CONDENSER INFORMATION						OPTIONAL WIRING BOX FILTERS					
	WEIGHT #1	WEIGHT #2	WEIGHT #3	WEIGHT DD	WEIGHT EE	WEIGHT FF	15 TON-G18	15 TON-G18	15 TON-G18	15 TON-G18	15 TON-G18	15 TON-G18
3-1BT-400-G18	370 LBS	5 TON	5 TON	5 TON	5 TON	5 TON	15"X20"X2" (A)	15"X15"X2" (B)	15"X15"X2" (C)	15"X15"X2" (D)	15"X15"X2" (E)	15"X15"X2" (F)

*** ADD CONDENSING UNIT WEIGHT TO WEIGHT IN TABLE ABOVE

** ALL MODELS ARE FULLY ELECTRONICALLY MODULATING

*** COMBUSTION EFFICIENCY OF EVERY UNIT IS 80.0% OVER THE ENTIRE GAS FIRING RANGE.

*** GAS PRESSURES IN TABLE ARE FOR NATURAL GAS, LP MINIMUM GAS INLET PRESSURE = 11" W.C.

***** MAX. EVAP WATER PRESSURE

UNIT INFORMATION

***** 9 INCH HIGH EXHAUST ADAPTER