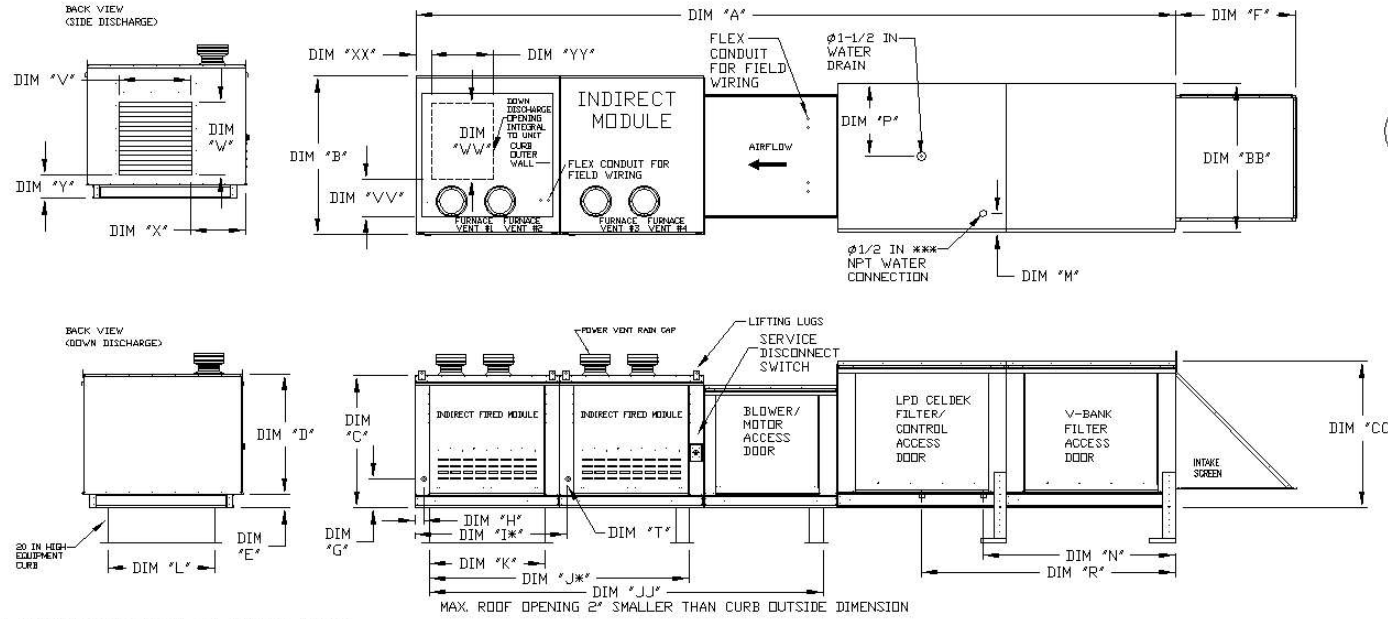


MODULAR OUTDOOR IBT HEATER WITH V-BANK, LPD EVAPORATIVE COOLER AND SCREEN INTAKE

SEVEL PRECASHBET
REV 05 09/23/2016



ALL DIMENSIONS ARE NOMINAL AND GIVEN IN INCHES.

MODEL	UNIT DIMENSIONS																WATER INLET				DRAIN OPENING				SIDE DISCHARGE OPENING				DOWN DISCHARGE OPENING				GAS CONNECTION																																																																																																																																																																																																																																																																																																																																																																																																																																																																																																																																																																																																																																															
	A	B	BB	C	CC	D	E	F	G	H	I	J	JK	JK	JK	JK	K	L	M	N	O	P	Q	R	S	T	U	V	W	X	Y	YY	ZZ	AA	AB	AC	AD	AE	AF	AG	AH	AI	AJ	AK	AL	AM	AN	AO	AP	AQ	AR	AS	AT	AU	AV	AW	AX	AY	AZ	BA	BB	BC	BD	BE	BF	BG	BH	BI	BJ	BK	BL	BM	BN	BO	BP	BQ	BR	BS	BT	BU	BV	BW	BX	BY	BZ	CA	CB	CC	CD	CE	CF	CG	CH	CI	CJ	CK	CL	CM	CN	CO	CP	CQ	CR	CS	CT	CU	CV	CW	CX	CY	CZ	DA	DB	DC	DD	DE	DF	DG	DH	DI	DJ	DK	DL	DM	DN	DO	DP	DQ	DR	DS	DT	DU	DV	DW	DX	DY	DZ	EA	EB	EC	ED	EE	EF	EG	EH	EI	EJ	EK	EL	EM	EN	EO	EP	EQ	ER	ES	ET	EU	EV	EW	EX	EY	EZ	FA	FB	FC	FD	FE	FF	FG	FH	FI	FJ	FK	FL	FM	FN	FO	FP	FQ	FR	FS	FT	FU	FV	FW	FX	FY	FZ	GA	GB	GC	GD	GE	GF	GG	GH	GI	GJ	GK	GL	GM	GN	GO	GP	GQ	GR	GS	GT	GU	GV	GW	GX	GY	GZ	HA	HB	HC	HD	HE	HF	HG	HH	HI	HJ	HK	HL	HM	HN	HO	HP	HQ	HR	HS	HT	HU	HV	HW	HX	HY	HZ	IA	IB	IC	ID	IE	IF	IG	IH	II	IJ	IK	IL	IM	IN	IO	IP	IQ	IR	IS	IT	IU	IV	IW	IX	IY	IZ	JA	JB	JC	JD	JE	JF	JG	JH	JI	IJ	JK	KL	KM	KN	KO	KP	KQ	KR	KS	KT	KU	KV	KW	KX	KY	KZ	LA	LB	LC	LD	LE	LF	LG	LH	LI	LJ	LK	LL	LM	LN	LO	LP	LQ	LR	LS	LT	LU	LV	LW	LX	LY	LZ	MA	MB	MC	MD	ME	MF	MG	MH	MI	MJ	MK	ML	MM	MN	MO	MP	MQ	MR	MS	MT	MU	MV	MW	MX	MY	MZ	NA	NB	NC	ND	NE	NF	NG	NH	NI	NJ	NK	NL	NM	NN	NO	NP	NQ	NR	NS	NT	NU	NV	NW	NX	NY	NZ	OA	OB	OC	OD	OE	OF	OG	OH	OI	OJ	OK	OL	OM	ON	OO	OP	OQ	OR	OS	OT	OU	OV	OW	OX	OY	OZ	PA	PB	PC	PD	PE	PF	PG	PH	PI	PJ	PK	PL	PM	PN	PO	PP	PQ	PR	PS	PT	PU	PV	PW	PX	PY	PZ	QA	QB	QC	QD	QE	QF	QG	QH	QI	QJ	QK	QL	QM	QN	QO	QP	QQ	QR	QS	QT	QU	QV	QW	QX	QY	QZ	RA	RB	RC	RD	RE	RF	RG	RH	RI	RJ	RK	RL	RM	RN	RO	RP	RQ	RR	RS	RT	RU	RV	RW	RX	RY	RZ	SA	SB	SC	SD	SE	SF	SG	SH	SI	SJ	SK	SL	SM	SN	SO	SP	SQ	SR	SS	ST	SU	SV	SW	SX	SY	SZ	TA	TB	TC	TD	TE	TF	TG	TH	TI	TJ	TK	TL	TM	TN	TO	TP	TQ	TR	TS	TT	TU	TV	TW	TX	TY	TZ	UA	UB	UC	UD	UE	UF	UG	UH	UI	UJ	UK	UL	UM	UN	UO	UP	UQ	UR	US	UT	UU	UV	UW	UX	UY	UZ	VA	VB	VC	VD	VE	VF	VG	VH	VI	VJ	VK	VL	VM	VN	VO	VP	VQ	VR	VS	VT	VU	VV	VW	VX	VY	VZ	WA	WB	WC	WD	WE	WF	WG	WH	WI	WJ	WK	WL	WM	WN	WO	WP	WQ	WR	WS	WT	WU	WV	WW	WX	WY	WZ	XA	XB	XC	XD	XE	XF	YG	YH	YI	YJ	YK	YL	YM	YN	YO	YP	YQ	YR	YS	YT	YU	YV	YW	YX	YY	YZ	ZA	ZB	ZC	ZD	ZE	ZF	ZG	ZH	ZI	ZJ	ZK	ZL	ZM	ZN	ZO	ZP	ZQ	ZR	ZS	ZT	ZU	ZV	ZW	ZX	ZY

UNIT INFORMATION

MODEL	CAPACITY (BTU/H)			TURNDOWN	RATIO	COMBUSTION		GAS PRESSURE***		CELDEK EVAPORATIVE COOLING UNIT			
	INPUT	MIN	MAX			EFFICIENCY***	HR	7" VC	14" VC	TOT. WEIGHT	MEDIA SIZE & QTY	NOZZLES	MAX. FLOW RATE
1-IBT150	28	28	120	6	80%	7" VC	14" VC	117 LBS	25"x36"x2"	20	6.5 GPH		
1-IBT200	800	267	150	6	80%	7" VC	14" VC	1147 LBS	25"x36"x2"	20	6.5 GPH		
1-IBT300-150-150	300	28	244	12	80%	7" VC	14" VC	1282 LBS	25"x36"x2"	20	6.5 GPH		
1-IBT400-200-200	400	267	328	12	80%	7" VC	14" VC	1276 LBS	25"x36"x2"	20	6.5 GPH		
2-IBT200	200	267	150	6	80%	7" VC	14" VC	1149 LBS	30"x36"x2"	28	8.4 GPH		
2-IBT300	300	44	244	6	80%	7" VC	14" VC	1492 LBS	30"x36"x2"	28	8.4 GPH		
2-IBT400	400	83.9	328	6	80%	7" VC	14" VC	1571 LBS	30"x36"x2"	28	8.4 GPH		
2-IBT400-200-200	400	267	328	12	80%	7" VC	14" VC	1459 LBS	30"x36"x2"	28	8.4 GPH		
2-IBT500-200-200	500	44	401	12	80%	7" VC	14" VC	1652 LBS	30"x36"x2"	28	8.4 GPH		
2-IBT500-400-400	500	53.3	644	12	80%	7" VC	14" VC	1724 LBS	30"x36"x2"	28	8.4 GPH		
3-IBT400	400	53.3	328	6	80%	7" VC	14" VC	2047 LBS	36"x42"x2"	33	10.15 GPH		
3-IBT500-200-200	500	44	401	12	80%	7" VC	14" VC	2122 LBS	36"x42"x2"	33	10.15 GPH		
3-IBT500-400-400	500	53.3	644	12	80%	7" VC	14" VC	2073 LBS	36"x42"x2"	33	10.15 GPH		
3-IBT1000-200-200-400	1000	44	800	24	80%	7" VC	14" VC	2812 LBS	36"x42"x2"	33	10.15 GPH		
4-IBT400	400	53.3	328	6	80%	7" VC	14" VC	2467 LBS	42"x48"x2"	42	12.6 GPH		
4-IBT500-200-400	500	53.3	644	12	80%	7" VC	14" VC	2634 LBS	42"x48"x2"	42	12.6 GPH		
4-IBT500-400-200-400	500	44	800	24	80%	7" VC	14" VC	2567 LBS	42"x48"x2"	42	12.6 GPH		
4-IBT1200-400-400-400	1200	53.3	968	18	80%	7" VC	14" VC	3073 LBS	42"x48"x2"	42	12.6 GPH		
4-IBT1400-200-200-400-400	1400	44	1120	24	80%	7" VC	14" VC	3759 LBS	42"x48"x2"	42	12.6 GPH		
4-IBT1600-400-400-400-400	1600	53.3	1280	24	80%	7" VC	14" VC	3993 LBS	42"x48"x2"	42	12.6 GPH		
5-IBT400	400	53.3	328	6	80%	7" VC	14" VC	2874 LBS	48"x72"x2"	57	20.1 GPH		
5-IBT500-200-400-400	500	44	800	24	80%	7" VC	14" VC	3052 LBS	48"x72"x2"	57	20.1 GPH		
5-IBT500-400-400-400	500	53.3	644	12	80%	7" VC	14" VC	3028 LBS	48"x72"x2"	57	20.1 GPH		
5-IBT1000-200-200-400	1000	44	800	24	80%	7" VC	14" VC	4064 LBS	48"x72"x2"	57	20.1 GPH		
5-IBT1200-400-400-400	1200	53.3	968	18	80%	7" VC	14" VC	4176 LBS	48"x72"x2"	57	20.1 GPH		
5-IBT1400-200-200-400-400	1400	44	1120	24	80%	7" VC	14" VC	4588 LBS	48"x72"x2"	57	20.1 GPH		
5-IBT1600-400-400-400-400	1600	53.3	1280	24	80%	7" VC	14" VC	4400 LBS	48"x72"x2"	57	20.1 GPH		

* ADDITIONAL RAIL/GAS CONNECTION ONLY FOR UNITS WITH 3 OR 4 FURNACES
 **ALL MODELS ARE FULLY ELECTRONICALLY MODULATING
 *** COMBUSTION EFFICIENCY OF EVERY UNIT IS 80.0% OVER THE ENTIRE GAS FIRING RANGE.
 **** GAS PRESSURES IN TABLE ARE FOR NATURAL GAS, 1" MINIMUM GAS INLET PRESSURE = 11" W.C.
 MAX. EVAP WATER PRESSURE = 50 PSI @ 70 DEG. F