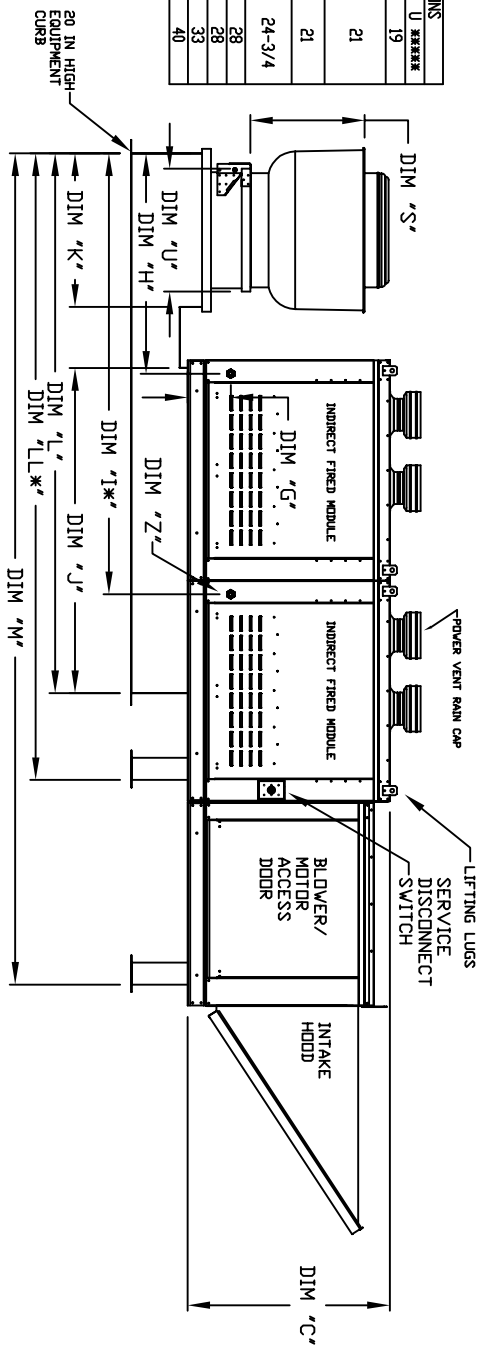


EXHAUST UNIT DIMENSIONS

MODEL #	S	T	U
BDU2	14-1/2	22	19
BDU1	18-1/2	27-1/4	21
BDU3	21-1/2	30-1/4	21
BDU5	23	33-3/4	24-3/4
BDU8	23-1/2	39-3/8	28
BDU20	29-1/2	38-7/8	28
BDU24	30-5/8	43-3/8	33
BDU30	33-1/2	52-3/4	40



MAX. ROOF OPENING 2" SMALLER THAN CURB OUTSIDE DIMENSION

ALL DIMENSIONS ARE NOMINAL AND GIVEN IN INCHES.

MODEL	UNIT DIMENSIONS										# OF FURNACES							
	A	B	C	D	E	F	G	H	I	J								
1-BT150-G10	92-1/4	49-1/2	39-9/16	35-13/16	3-3/4	44-3/8	8-3/4	36-1/8	N/A	71	21	106	N/A	16-3/4	3-1/8	21	3/4	1
1-BT200-G10	92-1/4	49-1/2	39-9/16	35-13/16	3-3/4	44-3/8	8-3/4	36-1/8	N/A	71	21	106	N/A	16-3/4	3-1/8	21	3/4	1
1-BT300-150-G10	92-1/4	49-1/2	39-9/16	35-13/16	3-3/4	44-3/8	8-3/4	36-1/8	N/A	71	21	106	N/A	16-3/4	3-1/8	21	3/4	2
1-BT400-200-G10	92-1/4	49-1/2	39-9/16	35-13/16	3-3/4	44-3/8	8-3/4	36-1/8	N/A	71	21	106	N/A	16-3/4	3-1/8	21	3/4	2
2-BT200-G15	102-0	100-1/4	49-1/2	39-9/16	35-13/16	3-3/4	53-5/8	8-3/4	46-1/8	79	31	124	N/A	14-3/16	3	24	3-1/8	1
2-BT300-G15	112	100-1/4	49-1/2	39-9/16	35-13/16	3-3/4	53-5/8	8-3/4	46-1/8	79	31	124	N/A	14-3/16	3	24	3-1/8	1
2-BT400-G15	112	100-1/4	49-1/2	39-9/16	35-13/16	3-3/4	53-5/8	8-3/4	46-1/8	79	31	124	N/A	14-3/16	3	24	3-1/8	1
2-BT600-300-G15	1079	100-1/4	49-1/2	39-9/16	35-13/16	3-3/4	53-5/8	8-3/4	46-1/8	79	31	124	N/A	14-3/16	3	24	3-1/8	2
2-BT800-400-G15	1233	100-1/4	49-1/2	39-9/16	35-13/16	3-3/4	53-5/8	8-3/4	46-1/8	79	31	124	N/A	14-3/16	3	24	3-1/8	2
2-BT1000-500-G15	1472	100-1/4	49-1/2	39-9/16	35-13/16	3-3/4	53-5/8	8-3/4	46-1/8	79	31	124	N/A	14-3/16	3	24	3-1/8	2
3-BT600-300-G18	1590	105-1/4	57-3/4	57-1/16	51-13/16	5-1/4	51-5/8	10-3/4	50-1/8	84	35	133	N/A	151-3/16	6-3/4	26-1/2	4-1/8	2
3-BT800-400-G18	1728	105-1/4	57-3/4	57-1/16	51-13/16	5-1/4	51-5/8	10-3/4	50-1/8	84	35	133	N/A	151-3/16	6-3/4	26-1/2	4-1/8	2
3-BT1000-500-G18	2467	165-3/8	57-3/4	57-1/16	51-13/16	5-1/4	51-5/8	10-3/4	50-1/8	84	35	133	N/A	151-3/16	6-3/4	26-1/2	4-1/8	3
3-BT1200-600-G18	2579	165-3/8	57-3/4	57-1/16	51-13/16	5-1/4	51-5/8	10-3/4	50-1/8	84	35	133	N/A	151-3/16	6-3/4	26-1/2	4-1/8	3

* ADDITIONAL RAIL/GAS CONNECTION ONLY FOR UNITS WITH 3 OR 4 FURNACES

**ALL MODELS ARE FULLY ELECTRONICALLY MODULATING

*** COMBUSTION EFFICIENCY OF EVERY UNIT IS 80.0% OVER THE ENTIRE GAS FIRING RANGE.

**** GAS PRESSURES IN TABLE ARE FOR NATURAL GAS, LP MINIMUM GAS INLET PRESSURE = 11" W.C.

***** 9 INCH HIGH EXHAUST ADAPTER MAY BE REQUIRED