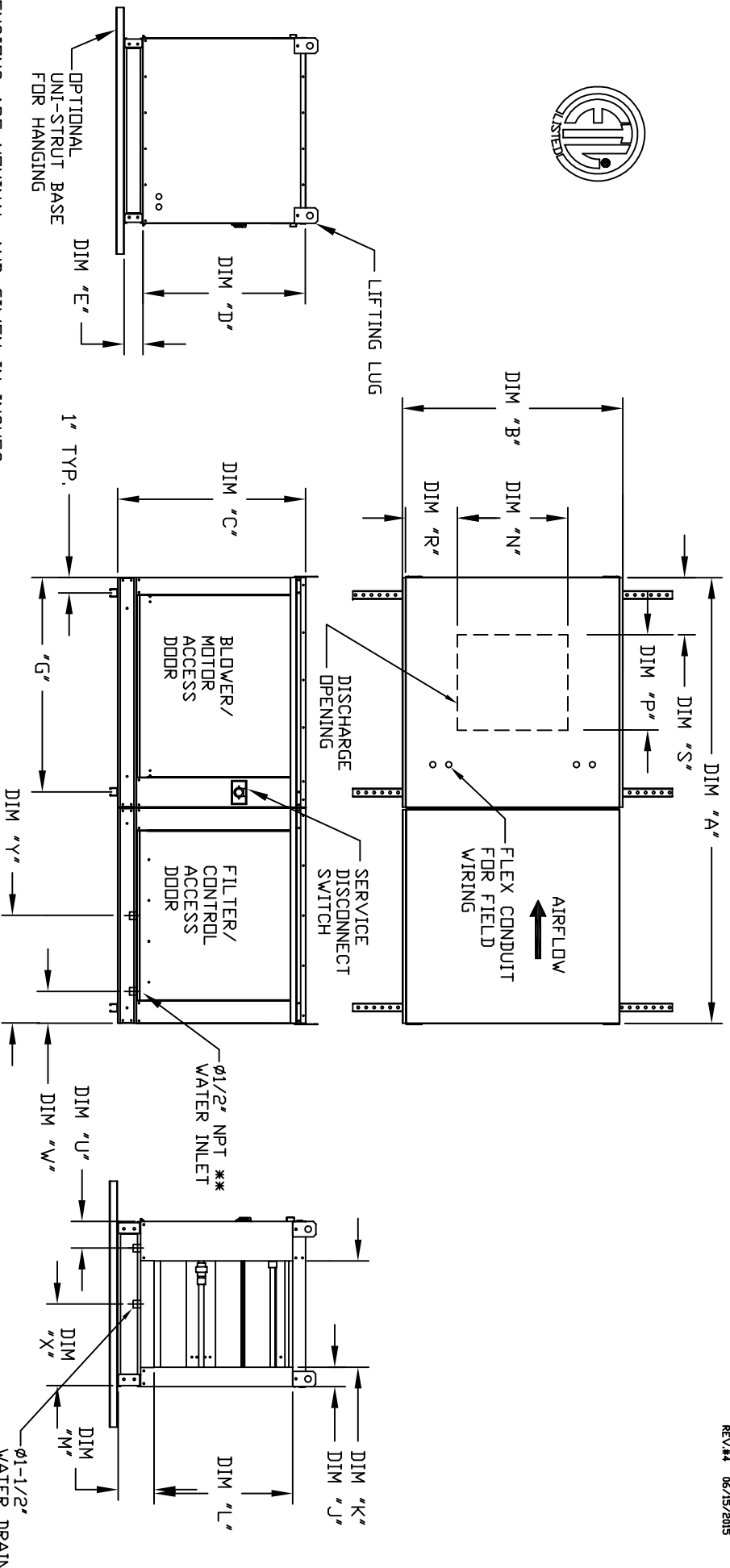


MODULAR INDOOR DOWN DISCHARGE BLOWER WITH EVAPORATIVE COOLER INTAKE

ECD/HAH
REV #4 06/15/2015



ALL DIMENSIONS ARE NOMINAL AND GIVEN IN INCHES.

MODEL	UNIT DIMENSIONS										INTAKE OPENING										DISCHARGE OPENING										WATER INLET										DRAIN OPENING																																																																									
	A	B	C	D	E	F	G	J	K	L	M	N	P	R	S	U	V	X	Y	A	B	C	D	E	F	G	J	K	L	M	N	P	R	S	U	V	X	Y	A	B	C	D	E	F	G	J	K	L	M	N	P	R	S	U	V	X	Y																																																									
G10	64-3/8	27-3/8	29-3/4	26-1/16	3-3/4	36	31-1/8	3-1/8	16-3/4	21-7/8	5-3/4	13 1/4	11-1/2	6-3/8	7-1/4	4-1/2	6-1/4	13	16	72-3/8	37-3/8	36-3/4	33-1/16	3-3/4	48	39-1/8	5-1/8	24-3/4	28-7/8	5-3/4	15-3/4	13-9/16	10-1/8	12-1/2	4-1/2	6-1/4	18	16	72-3/8	37-3/8	36-3/4	33-1/16	3-3/4	48	39-1/8	5-1/8	24-3/4	28-7/8	5-3/4	18-3/4	16	8-5/8	10	4-1/2	6-1/4	18	16	83-3/8	41-3/8	43-3/8	38-1/16	5-1/4	60	44-1/8	4-5/8	29-1/4	33-7/8	7-1/2	22	19	9	12	4-1/2	5-3/4	20	19	99-9/16	48-7/16	51-3/8	46-1/8	5-1/4	60	63-3/16	4-5/8	36-1/4	41-7/8	7-1/2	24-7/8	24-7/8	11-1/16	12-1/4	4-1/2	5-3/4	23-1/2	17-1/2	109-9/16	59-3/16	58-3/8	53-1/8	5-1/4	72	73-3/16	4-5/8	47	48-7/8	7-1/2	31-3/8	31-3/8	13-3/16	14-1/2	4-1/2	5-3/4	28-7/8	17-1/2

UNIT INFORMATION

MODEL	STANDARD EVAPORATIVE COOLING UNIT										CELDEK EVAPORATIVE COOLING UNIT									
	TOT. WEIGHT	MEDIA SIZE & QTY	VEL. @ MAX. CFM	NOZZLES	MAX. FLOW RATE	TOT. WEIGHT	MEDIA SIZE & QTY	VEL. @ MAX. CFM	NOZZLES	MAX. FLOW RATE										
G10	335 LBS	20"x25"x2" (3)	406 FPM	6	3 GPH	340 LBS	20"x24"x12"	1050 FPM	12	3.9 GPH										
G12	530 LBS	16"x20"x2" (8)	358 FPM	10	5 GPH	525 LBS	25"x32"x12"	900 FPM	20	6.5 GPH										
G15	540 LBS	16"x20"x2" (8)	429 FPM	10	5 GPH	535 LBS	25"x32"x12"	1080 FPM	20	6.5 GPH										
G18	675 LBS	20"x25"x2" (8)	348 FPM	14	7 GPH	665 LBS	30"x36"x12"	1067 FPM	28	8.4 GPH										
920	1065 LBS	16"x20"x2" (15)	572 FPM	24	12 GPH	1035 LBS	38"x43"x12"	1322 FPM	35	10.15 GPH										
925	1510 LBS	20"x25"x2" (12)	638 FPM	30	15 GPH	1470 LBS	45"x54"x12"	1304 FPM	42	12.6 GPH										

** MAY BE VAD W/ATED DORSIDE - EN DET @ 70 HFC C