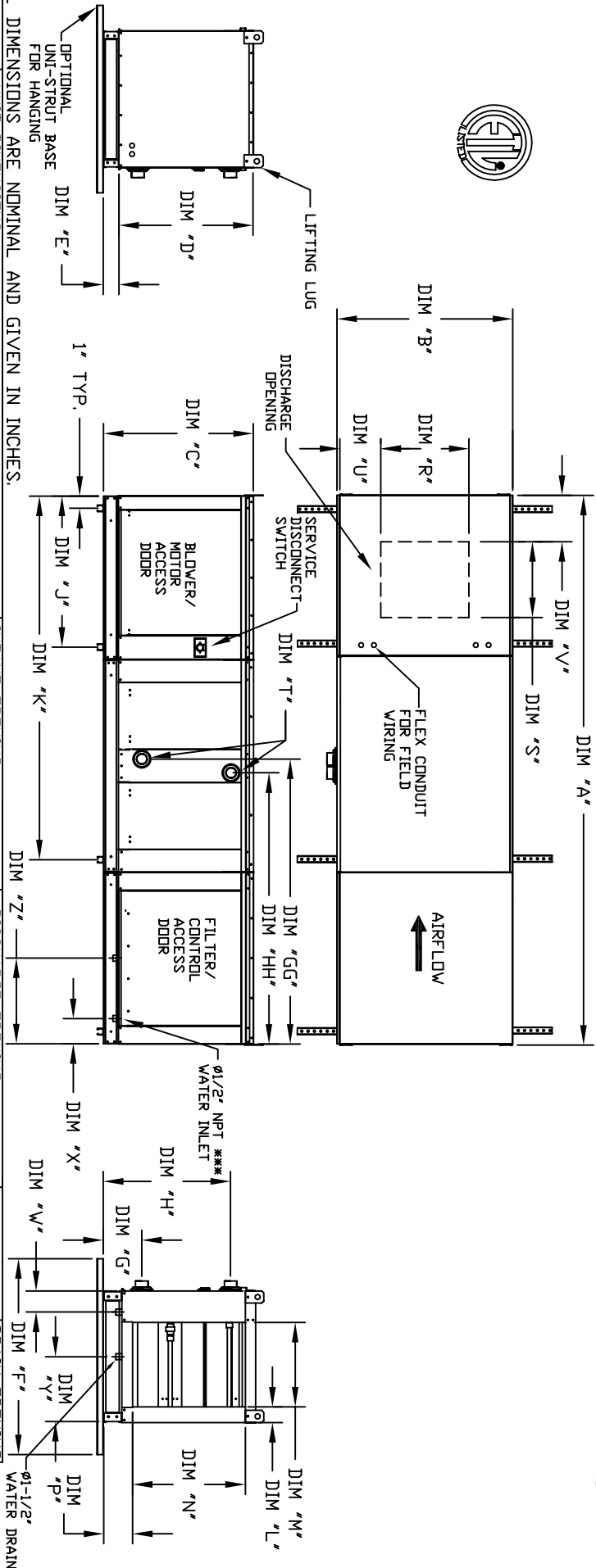


MODULAR INDOOR DOWN DISCHARGE BLOWER WITH HEATING COIL AND EVAPORATIVE COOLER INTAKE

REV 44 12/1/2016



ALL DIMENSIONS ARE NOMINAL AND GIVEN IN INCHES.

UNIT SIZE	STANDARD EVAPORATIVE COOLING UNIT W/													CELDEK EVAPORATIVE COOLING UNIT W/																			
	A	B	C	D	E	F	J	K	M	N	P	R	S	U	V	W	X	Y	Z	TOTAL CAPACITY (AMBH)	PIPE CONNECTION 'T' (MPT)	STEAM PSI	G	GG	H	HH	TOTAL CAPACITY (AMBH)	PIPE CONNECTION 'T' (MPT)	STEAM PSI	G	GG	H	HH
1	106-5/8	27-3/8	29-3/4	26-1/16	3-3/4	36-31-1/8	7-3-1/4	3-1-1/8	16-3/4	21-7/8	5-3/4	13-1/4	11-1/2	6-3/8	7-1/4	4-1/2	6-1/4	13	16	165.63	2	5	8-3/4	51-1/16	16-15/16	51-1/16	500	2-1/2	5	8-3/4	51-1/16	16-15/16	51-1/16
2**	114-5/8	37-3/8	36-3/4	33-1/16	3-3/4	48-39-1/8	81-1/4	5-1/8	24-3/4	28-7/8	5-3/4	15-3/4	13-9/16	10-1/8	12-1/2	4-1/2	6-1/4	18	16	320.88	2	2**	8-1/4	52-7/16	28-3/4	49-11/16	750	2-1/2	5	8-3/4	51-1/16	18-3/8	51-1/16
2	114-5/8	37-3/8	36-3/4	33-1/16	3-3/4	48-39-1/8	81-1/4	5-1/8	24-3/4	28-7/8	5-3/4	15-3/4	13-9/16	10-1/8	12-1/2	4-1/2	6-1/4	18	16	320.88	2	2**	8-1/4	52-7/16	28-3/4	49-11/16	750	2-1/2	5	8-3/4	51-1/16	18-3/8	51-1/16
3	125-5/8	41-3/8	43-3/8	38-1/16	5-1/4	60-44-1/8	86-1/4	4-5/8	29-1/4	33-7/8	7-1/2	22	19	9	12	4-1/2	5-3/4	20	19	454.97	2-1/2	3	10-1/4	57-1/16	23-5/8	57-1/16	920	2-1/2	5	10-1/4	57-1/16	23-5/8	57-1/16
4	153-7/8	48-7/16	51-3/8	46-1/8	5-1/4	60-63-3/16	117-3/8	4-5/8	36-1/4	41-7/8	7-1/2	24-7/8	24-7/8	11-1/16	12-1/4	4-1/2	5-3/4	23-1/2	17-1/2	831.87	2-1/2	4	10-1/4	60-7/32	28-5/8	60-7/32	1470	2-1/2	5	10-1/4	60-7/32	28-5/8	60-7/32
5	163-7/8	59-3/16	58-3/8	53-1/8	5-1/4	72-73-3/16	127-3/8	4-5/8	47	48-7/8	7-1/2	31-3/8	31-3/8	13-3/16	14-1/2	4-1/2	5-3/4	28-7/8	17-1/2	1230.16	3	5	10-1/4	61-5/16	52-1/4	58-7/16	2030	2-1/2	5	10-1/4	60-7/32	31-3/4	60-7/32

UNIT SIZE	STANDARD EVAPORATIVE COOLING UNIT W/													CELDEK EVAPORATIVE COOLING UNIT W/														
	TOT. WEIGHT (LBS)	STEAM COIL	WATER COIL	MODULE	TOT. WEIGHT (LBS)	STEAM COIL	WATER COIL	MODULE	TOT. WEIGHT (LBS)	STEAM COIL	WATER COIL	MODULE	TOT. WEIGHT (LBS)	STEAM COIL	WATER COIL	MODULE	TOT. WEIGHT (LBS)	STEAM COIL	WATER COIL	MODULE	TOT. WEIGHT (LBS)	STEAM COIL	WATER COIL	MODULE	TOT. WEIGHT (LBS)	STEAM COIL	WATER COIL	MODULE
1	495	750	750	1500	495	750	750	1500	500	745	745	1470	500	745	745	1470	500	745	745	1470	500	745	745	1470	500	745	745	1470
2**	750	1600	1600	3200	750	1600	1600	3200	745	1600	1600	3200	745	1600	1600	3200	745	1600	1600	3200	745	1600	1600	3200	745	1600	1600	3200
2	750	1600	1600	3200	750	1600	1600	3200	745	1600	1600	3200	745	1600	1600	3200	745	1600	1600	3200	745	1600	1600	3200	745	1600	1600	3200
3	935	1935	1935	3870	935	1935	1935	3870	925	1935	1935	3870	925	1935	1935	3870	925	1935	1935	3870	925	1935	1935	3870	925	1935	1935	3870
4	1500	3000	3000	6000	1475	3000	3000	6000	1470	3000	3000	6000	1470	3000	3000	6000	1470	3000	3000	6000	1470	3000	3000	6000	1470	3000	3000	6000
5	2035	4070	4070	8140	2030	4070	4070	8140	1995	4070	4070	8140	1995	4070	4070	8140	1995	4070	4070	8140	1995	4070	4070	8140	1995	4070	4070	8140

\*\* DIMENSIONS APPLY TO UNITS WITH G12 BLOWERS ONLY

\*\*\* MAV F1/AD WATER DISCHARGE - EN DET A 7N NCR F